

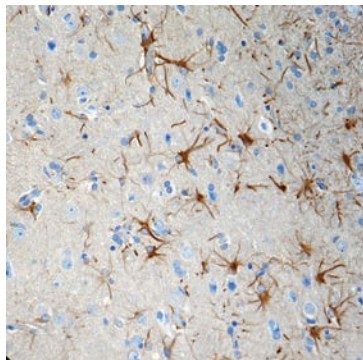
# Neuroinflammation

## Antibodies and Reagents

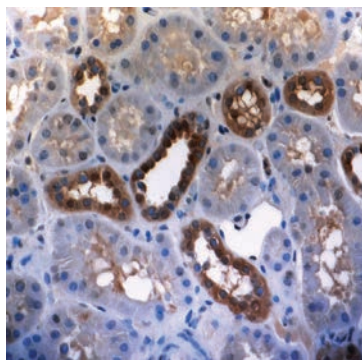
Neuroinflammation is a heightened immune response in the central nervous system that plays a key role in the development and progression of neurodegenerative disease. Implicated as both neurotoxic and neuroprotective, neuroinflammation is a complex biological system involving many proteins, receptors and cell types. BioLegend is proud to offer a broad range of quality-tested products to support investigations into the role and implications of neuroinflammation in neurological dysfunction.

We have a variety of products to cover your areas of interest in neuroinflammation, including:

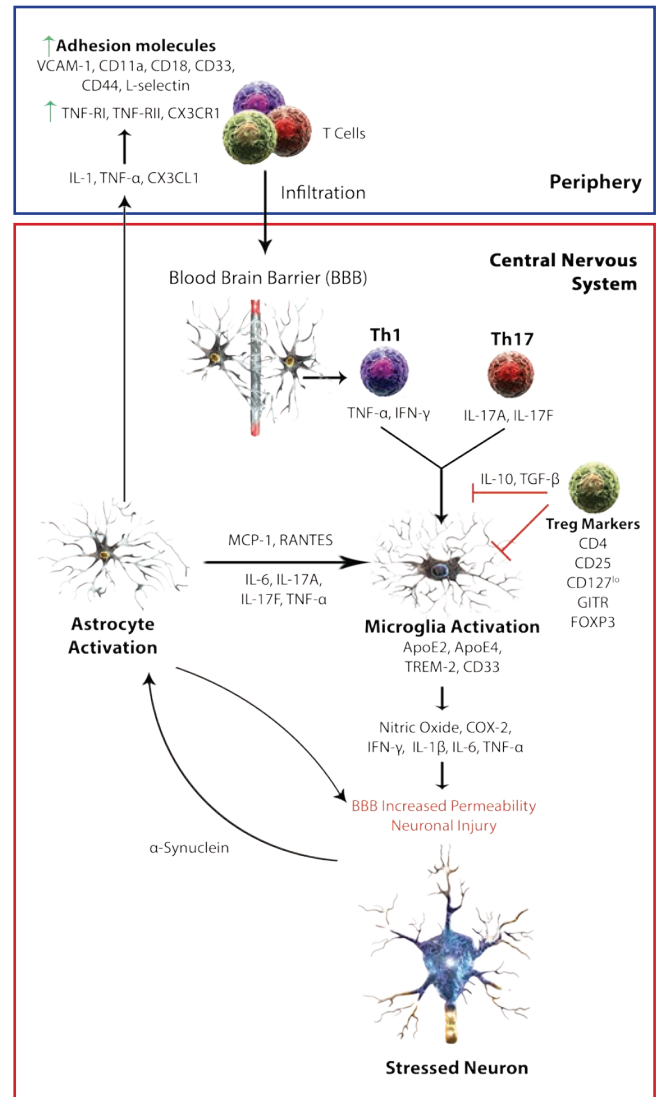
- Toll-Like Receptors
- Scavenger Receptors
- Cell Adhesion Molecules
- Cytokines, Chemokines, and Receptors
- Oxidative Stress Responses
- Lipid Regulation



Staining of CX3CR1 (8E10.D9, Cat. No. MMS-5067) on formalin-fixed, paraffin-embedded human brain.



Staining of MMP2 (4D3, Cat. No. MMS-5291) on formalin-fixed, paraffin-embedded human kidney.



See all of our neuroscience reagents at:  
[antibody.biolegend.com](https://antibody.biolegend.com)



Toll-Free Tel (US & Canada): 1.800.223.0796

Tel: 1.781.915.5200

Email: [ab.products@biolegend.com](mailto:ab.products@biolegend.com)

[antibody.biolegend.com](https://antibody.biolegend.com)

07-0091-00

# Neuroinflammation Antibodies and Reagents

## Scavenger Receptors

| Specificity     | Clone      | Reactivity | Application(s)      | Cat. No. |
|-----------------|------------|------------|---------------------|----------|
| CD36            | FA6-152    | Hu, Rt     | IHC, IF, IP, FC     | MMS-5023 |
| CD36            | CRF D-2712 | Ms, Rt     | WB, IF, IP, FC      | MMS-5024 |
| CD36            | UA009      | Rt         | IHC, IP, FC         | MMS-5031 |
| CD209a          | MMD3       | Ms         | FC                  | MMS-5022 |
| DEC-205 (CD205) | HD30       | Hu         | IHC, FC             | MMS-5221 |
| MARCO           | PLK-1      | Ms, Bv, Hu | WB, IF, IP, IHC, FC | MMS-5224 |
| SR-BI           | 3D12       | Rt         | IHC, FC             | MMS-5030 |

## IgG-like Co-receptors

| Specificity                   | Clone   | Reactivity | Application(s) | Cat. No. |
|-------------------------------|---------|------------|----------------|----------|
| CD4 (T-cells and macrophages) | 15-8A2  | Rt         | IHC, FC        | MMS-5059 |
| CD8                           | 15-11C5 | Rt         | IHC, FC        | MMS-5060 |
| CD8                           | C8/144B | Hu         | IHC            | SIG-3629 |

## Co-receptors

| Specificity              | Clone  | Reactivity | Application(s) | Cat. No. |
|--------------------------|--------|------------|----------------|----------|
| CD14 (for TLR2 and MD-2) | 18D11  | Hu, Pc     | IHC, FC        | MMS-5006 |
| CD14                     | Sa14-2 | Ms         | WB, IF, FC     | MMS-5011 |
| CD16                     | 3G8    | Hu, Si     | FC             | MMS-5217 |

## Myeloid Receptors

| Specificity | Clone | Reactivity | Application(s)  | Cat. No. |
|-------------|-------|------------|-----------------|----------|
| TREM-1      | L5-B8 | Ms         | WB, IF, FC      | MRT-5051 |
| TREM-1      | 6B1   | Hu         | WB, FACS, ELISA | MMS-5052 |
| TREM-2      | 6E9   | Ms         | IP, FC          | MRT-5093 |

## Toll-like Receptors

| Specificity          | Clone    | Reactivity | Application(s)      | Cat. No. |
|----------------------|----------|------------|---------------------|----------|
| sMD-2 and sMD-2/TLR4 | 4H1      | Hu         | WB, IHC, IF         | MMS-5013 |
| TLR1 (CD281)         | GD2.F4   | Hu         | IHC, IF, FC         | MMS-5043 |
| TLR2                 | T2.5     | Ms, Hu     | IHC, IF, IP, FC     | MMS-5012 |
| TLR2 (CD282)         | TL2.1    | Hu, Ca, Si | WB, IF, IP, IHC, FC | MMS-5009 |
| TLR3                 | TLR3.7   | Hu, Ms, Ca | WB, IF, IP, IHC, FC | MMS-5053 |
| TLR4                 | HTA125   | Hu, Ca, Si | WB, IF, IP, FC      | MMS-5010 |
| TLR4/MD-2            | 7E3      | Hu         | IHC, FC             | MMS-5007 |
| TLR4/MD-2            | MTS510   | Ms         | IHC, IP, FC         | MRT-5014 |
| TLR6                 | TLR6.127 | Ms, Ca, Hu | IHC, IF, IP, FC     | MMS-5042 |
| TLR9                 | 5G5      | Ms, Ca, Hu | WB, IHC, IF, FC     | MMS-5041 |

## Leukocyte Markers

| Specificity                              | Clone  | Reactivity         | Application(s) | Cat. No. |
|--|--------|--------------------|----------------|----------|
| Human Mature Macrophages (25F9)          | 25F9   | Hu                 | WB, IHC, FC    | MMS-5058 |
| Mouse CD110/CALLA                        | 56C6   | Hu, Ms, Rt, Ca, Si | IHC (IVD)      | SIG-3630 |
| Mouse F4/80 Pan Macrophages (BM8)        | BM8    | Ms, Hu             | WB, IHC, FC    | MRT-5063 |
| Mouse Monocytes and Macrophages (ER-HR3) | ER-HR3 | Ms                 | IHC, IF, FC    | MRT-5062 |
| Rat Macrophages (F-6-J)                  | F-6-J  | Rt                 | IHC, FC        | MMS-5054 |

## Oxidative Stress Response

| Specificity              | Clone   | Reactivity | Application(s)     | Cat. No.  |
|--------------------------|---------|------------|--------------------|-----------|
| DJ-1                     | 4H4     | Hu, Bv, Ms | WB, IHC, IF        | MMS-5003  |
| DJ-1                     | E2.19   | Hu, Ze     | WB, IHC, ELISA     | SIG-39830 |
| DJ-1 Human Protein       | -       | Hu         | SIG-39900          |           |
| DJ-1 Polyclonal Antibody | -       | Hu, Rt, Ms | IHC, ELISA         | SIG-39835 |
| MPO (myeloperoxidase)    | 266-6K1 | Hu         | WB, ELISA          | MMS-5050  |
| MPO                      | 2D4     | Ms, Rt     | IHC, IF, FC, ELISA | MMS-5055  |
| MPO                      | 8F4     | Ms, Rt     | IHC, ELISA, FC     | MMS-5048  |

Bv= Bovine, Ca= Canine, Hmr= Hamster, Hu= human, Ms= mouse, Pc= Porcine, Rb= Rabbit, Rt= Rat, Si= Simian, Ze= Zebrafish.



## Cell Adhesion Molecules

| Specificity              | Clone     | Reactivity  | Application(s)  | Cat. No.  |
|--------------------------|-----------|-------------|-----------------|-----------|
| CD11a                    | I21/7     | Ms          | FC              | MRT-5213  |
| CD18                     | 1B4       | Hu          | FC              | MMS-5218  |
| CD18                     | C71/16    | Ms          | FC              | MRT-5214  |
| CD31 (PECAM-1)           | JC/70A    | Hu          | IHC             | SIG-3632  |
| CD33                     | P67.6     | Hu          | IHC             | MMS-5090  |
| CD34                     | QBEnd/10  | Hu          | IHC             | SIG-3326  |
| CD44                     | IM7.8.1   | Hu, Ms, Rt  | IHC, FC         | MRT-5290  |
| Galectin-3               | 5C21      | Hu, Ms, Rt  | WB, IHC, IF     | MMS-5004  |
| Integrin α2β1            | P1E6      | Hu          | IHC             | MMS-488P  |
| Integrin α3β1            | P1B5      | Hu          | IF, IP, IHC     | MMS-490R  |
| Integrin α4β1            | P4C2      | Hu          | IF, IP, FC      | MMS-492P  |
| Integrin α5β1            | P1D6      | Hu          | IF, IP          | MMS-496R  |
| Integrin αvβ5            | P1F6      | Hu, Rt, Hmr | IF, IP, IHC     | MMS-474R  |
| Integrin β1              | P5D2      | Hu          | IP, IF          | MMS-472R  |
| Integrin β1 (Activating) | P4G11     | Hu          | WB, IF, IP      | MMS-480R  |
| LECAM-1 (DREG 56.6)      | DREG 56.6 | Hu          | FC              | MMS-5209  |
| PECAM                    | P2B1      | Hu          | WB, IF, IP, IHC | MMS-484R  |
| URO-1                    | J143      | Hu          | IHC             | SIG-38010 |
| VCAM-1                   | P3C4      | Hu          | IF, IP, IHC, FC | MMS-476P  |

## Cytokine & Chemokine Receptors

| Specificity | Clone   | Reactivity | Application(s)  | Cat. No. |
|-------------|---------|------------|-----------------|----------|
| CX3CR1      | 8E10.D9 | Hu, Ms     | WB, IHC         | MMS-5067 |
| CXCR4       | 12G5    | Hu, Ms, Rt | IHC, FC         | MMS-5121 |
| TNF-RI      | HM1009  | Ms         | WB, IHC, FC     | MRT-5029 |
| TNF-RI      | H398    | Hu, Rt     | WB, IP, IHC, FC | MMS-5025 |
| TNF-RII     | MR2-1   | Hu, Si     | IHC, IF, IP, FC | MMS-5027 |
| TNF-RII     | HM102   | Ms         | IHC, IP, FC     | MRT-5028 |

## Cytokines and Chemokines

| Specificity | Clone     | Reactivity | Application(s)          | Cat. No. |
|-------------|-----------|------------|-------------------------|----------|
| IL-6        | 5E1       | Hu, Si     | WB, IP, ELISA           | MMS-5064 |
| IL-6        | MP5-32C11 | Ms         | WB, ELISA               | MRT-5057 |
| IL-17F      | 6B9.H8    | Hu, Ms     | WB                      | MMS-5118 |
| MCP-1       | MNA.1     | Hu, Pc     | WB, IP, IHC, ELISA, FC  | MMS-5049 |
| MCP-1       | ECE.2     | Ms         | WB, IHC                 | MRT-5061 |
| RANTES      | VL1       | Hu         | FC                      | MMS-5227 |
| TNF-α       | TNF 104C  | Hu         | WB, Blocking, FC, ELISA | MMS-146P |

## Cytokine and Chemokine Regulation

| Specificity  | Clone  | Reactivity | Application(s) | Cat. No. |
|--------------|--------|------------|----------------|----------|
| CD40         | 626    | Hu         | IHC, FC        | MMS-5086 |
| FMIP (THOC5) | F6D/11 | Hu, Ms, Rt | WB             | MMS-5281 |
| PAR-2        | SAM11  | Hu, Ms     | WB, IHC        | MMS-5116 |
| SIRP β1      | 84     | Ms         | WB             | MRT-5095 |
| SIRP β1      | B1D5   | Hu         | FC             | MMS-5240 |

## Inflammatory Markers/Lipid Regulation

| Specificity                         | Clone | Reactivity | Application(s)     | Cat. No.  |
|-------------------------------------|-------|------------|--------------------|-----------|
| Apo-D                               | 8CD6  | Hu         | IHC, ELISA         | SIG-39780 |
| Apo-E                               | D6E10 | Hu         | WB, IP, IHC, ELISA | SIG-39740 |
| Apo-E                               | E6D7  | Hu         | WB, IP, IHC, ELISA | SIG-39750 |
| APO E2                              | 3C2   | Hu         | WB, ELISA          | MMS-5046  |
| APO E2                              | 8G3   | Hu         | WB, ELISA          | MMS-5047  |
| APO E4                              | 5B5   | Hu         | IHC, ELISA         | MMS-5015  |
| APO E4                              | 5A9   | Hu         | IHC, ELISA         | MMS-5016  |
| Apo-E4                              | 5G7   | Hu         | WB, ELISA          | SIG-39752 |
| Apo-E4                              | 9D11  | Hu         | WB, ELISA          | SIG-39754 |
| Apo-J/Clusterin Polyclonal Antibody | -     | Hu         | IHC, ELISA         | SIG-39080 |
| Coronin 1a Polyclonal Antibody      | -     | Hu, Rt, Ms | WB, IHC, IF        | PRB-5002  |
| Lipocortin-1 (74/3)                 | 74/3  | Hu         | FC                 | MMS-5237  |
| MMP2                                | 4D3   | Hu         | WB, IHC            | MMS-5291  |
| MMP9                                | 2C3   | Hu         | IHC                | MMS-5293  |
| TIMP2                               | 3A4   | Hu, Rt, Ms | IHC, IF            | MMS-5294  |

Toll-Free Tel (US & Canada): 1.800.223.0796

Tel: 1.781.915.5200

Email: [ab.products@biolegend.com](mailto:ab.products@biolegend.com)

[antibody.biolegend.com](http://antibody.biolegend.com)

07-0091-00