

## GMP APC anti-human CD117 (c-kit) Antibody

<b>Catalog# / Size</b>	260120 / 100 tests
<b>Clone</b>	104D2
<b>Other Names</b>	Stem cell factor receptor, c-kit, mast cell growth factor receptor, steel factor receptor
<b>Isotype</b>	Mouse IgG1, κ
<b>Description</b>	CD117 is a 145 kD protein tyrosine kinase also known as c-Kit. It is a receptor for stem cell factor or c-Kit ligand. CD117 is expressed on pluripotent hematopoietic progenitor cells (approximately 1-4% bone marrow cells), mast cells, and acute myeloid leukemia cells (AML). CD117 binding of c-Kit ligand induces phosphorylation of CD117 and stimulates proliferation and survival of primitive hematopoietic stem cells as well as erythroid-committed and granulomonocytic committed cells.

### Product Details

<b>Reactivity</b>	Human
<b>Antibody Type</b>	Monoclonal
<b>Host Species</b>	Mouse
<b>Immunogen</b>	MOLM-1 megakaryocytic cell line
<b>Formulation</b>	Phosphate-buffered solution, pH 7.2, containing 0.09% sodium azide and 0.2% (w/v) BSA (origin USA).
<b>Preparation</b>	The antibody was purified by affinity chromatography and conjugated with APC under optimal conditions.
<b>Concentration</b>	100 µg/mL
<b>Storage &amp; Handling</b>	The antibody solution should be stored undiluted between 2°C and 8°C, and protected from prolonged exposure to light. <b>Do not freeze.</b>
<b>Application</b>	<a href="#">FC - Quality tested</a>
<b>Recommended Usage</b>	Each lot of this antibody is quality control tested by <a href="#">immunofluorescent staining with flow cytometric analysis</a> . For flow cytometric staining, the suggested use of this reagent is 5 µL per million cells in 100 µL staining volume or 5 µL per 100 µL of whole blood. It is recommended that the reagent be titrated for optimal performance for each application.
<b>Excitation Laser</b>	Red Laser (633 nm)
<b>Application Notes</b>	The 104D2 antibody does not block binding of c-Kit ligand. Additional reported applications (for the relevant formats) include: immunoprecipitation <sup>1</sup> , immunofluorescence microscopy <sup>1</sup> , and spatial biology (IBEX) <sup>4,5</sup> .
<b>Application References</b>	<ol style="list-style-type: none"> <li>1. Broudy VC, <i>et al.</i> 1999. <i>Blood</i> 94:1979. (IF, IP)</li> <li>2. Yoshino N, <i>et al.</i> 2000. <i>Exp. Anim. (Tokyo)</i> 49:97. (FC)</li> <li>3. Nagano M, <i>et al.</i> 2007. <i>Blood</i> 110:151. (FC) <a href="#">PubMed</a></li> <li>4. Radtke AJ, <i>et al.</i> 2020. <i>Proc Natl Acad Sci U S A.</i> 117:33455-65. (SB) <a href="#">PubMed</a></li> <li>5. Radtke AJ, <i>et al.</i> 2022. <i>Nat Protoc.</i> 17:378-401. (SB) <a href="#">PubMed</a></li> </ol>
<b>(PubMed link indicates BioLegend citation)</b>	
<b>Disclaimer</b>	<p><b>GMP RUO Flow Cytometry Antibodies.</b> BioLegend GMP RUO fluorophore conjugated antibodies are manufactured in a dedicated GMP facility and compliant with ISO 13485:2016. For research use only. Not for use in diagnostic or therapeutic procedures. Our processes include:</p> <ul style="list-style-type: none"> <li>• Batch-to-batch consistency</li> <li>• Material traceability</li> <li>• Documented procedures</li> <li>• Documented employee training</li> <li>• Equipment maintenance and monitoring records</li> <li>• Lot-specific certificates of analysis</li> </ul>

- Quality audits per ISO 13485:2016
- QA review of released products

## Antigen Details

---

<b>Structure</b>	Growth factor receptor with tyrosine kinase activity, subclass III, approximately 145 kD
<b>Distribution</b>	Pluripotent hematopoietic progenitor cells (approximately 1-4% bone marrow cells), mast cells, acute myeloid leukemic cells (AML)
<b>Function</b>	Growth factor receptor for stem cell factor. Induces proliferation and survival of primitive hematopoietic progenitors. Potent inducer of proliferation in erythroid-committed progenitor cells. Defects in CD117 have been linked to severe anemia and a decreased number of hematopoietic progenitor cells.
<b>Ligand/Receptor</b>	c-Kit ligand
<b>Modification</b>	Multiple phosphorylation sites
<b>Cell Type</b>	Embryonic Stem Cells, Hematopoietic stem and progenitors, Leukemia, Mast cells, Mesenchymal Stem Cells
<b>Biology Area</b>	Immunology, Stem Cells
<b>Molecular Family</b>	CD Molecules
<b>Antigen References</b>	<ol style="list-style-type: none"> <li>1. Giebel LB, <i>et al.</i> 1992. <i>Oncogene</i> 7:2207.</li> <li>2. Furitsu T, <i>et al.</i> 1993. <i>J. Clin. Invest.</i> 92:1736.</li> </ol>
<b>Gene ID</b>	<a href="#">3815</a>

## Related Protocols

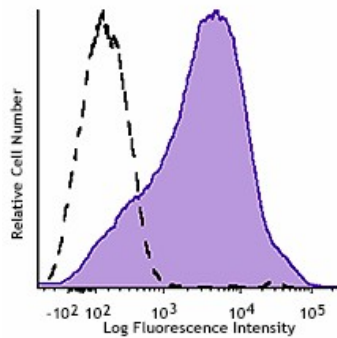
---

[Cell Surface Flow Cytometry Staining Protocol](#)

## Other Formats

---

Purified anti-human CD117 (c-kit), PE anti-human CD117 (c-kit), APC anti-human CD117 (c-kit), Biotin anti-human CD117 (c-kit), PE/Cyanine5 anti-human CD117 (c-kit), PE/Cyanine7 anti-human CD117 (c-kit), PerCP/Cyanine5.5 anti-human CD117 (c-kit), Brilliant Violet 421™ anti-human CD117 (c-kit), Brilliant Violet 605™ anti-human CD117 (c-kit), Brilliant Violet 510™ anti-human CD117 (c-kit), Brilliant Violet 650™ anti-human CD117 (c-kit), Purified anti-human CD117 (c-kit) (Maxpar® Ready), PE/Dazzle™ 594 anti-human CD117 (c-kit), APC/Cyanine7 anti-human CD117 (c-kit), Brilliant Violet 711™ anti-human CD117 (c-kit), FITC anti-human CD117 (c-kit), Alexa Fluor® 488 anti-human CD117 (c-kit), Alexa Fluor® 647 anti-human CD117 (c-kit), APC/Fire™ 750 anti-human CD117 (c-kit), Brilliant Violet 785™ anti-human CD117 (c-kit), TotalSeq™-A0061 anti-human CD117 (c-kit), TotalSeq™-C0061 anti-human CD117 (c-kit), TotalSeq™-B0061 anti-human CD117 (c-kit), Alexa Fluor® 700 anti-human CD117 (c-kit), Spark NIR™ 685 anti-human CD117 (c-kit) Antibody, APC/Fire™ 750 anti-human CD117 (c-kit), TotalSeq™-D0061 anti-human CD117 (c-kit)



Typical results from human erythroleukemia cell line TF-1 stained either with 104D2 APC used at 5 µL/test (solid line) or with an isotype control (dotted line).

Symbols Glossary\*

Symbol	Meaning	Symbol Title	Symbol No.	Symbol	Meaning	Symbol Title	Symbol No.
	Catalog number	Catalogue number	5.1.6		Indicates the need for the user to consult the instructions for use.	Consult instructions for use	5.4.3
	Indicates the temperature limits to which the medical device can be safely exposed.	Temperature limit	5.3.7		Indicates a medical device that needs protection from light sources.	Keep away from sunlight	5.3.2
	Indicates the upper limit of temperature to which the medical device can be safely exposed.	Upper limit of temperature	5.3.6		Indicates the date after which the medical device is not to be used.	Use-by date	5.1.4
	Indicates the medical device manufacturer.	Manufacturer	5.1.1		Indicates the authorized representative in the European Community.	Authorized representative in the European Community	5.1.2
	Indicates the manufacturer's batch code so that the batch or lot can be identified.	Batch code	5.1.5		Indicates a medical device that is intended to be used as an in vitro diagnostic medical device.	<i>In vitro</i> diagnostic medical device	5.5.1

\* Symbol information is from EN ISO 15223-1:2016 Medical devices – Symbols to be used with medical device labels, labelling and information to be supplied – Part 1: General requirements

For research use only. Not for resale. BioLegend will not be held responsible for patent infringement or other violations that may occur with the use of our products.

\*These products may be covered by one or more Limited Use Label Licenses (see the BioLegend Catalog or our website, [www.biolegend.com/ordering#license](http://www.biolegend.com/ordering#license)). BioLegend products may not be transferred to third parties, resold, modified for resale, or used to manufacture commercial products, reverse engineer functionally similar materials, or to provide a service to third parties without written approval of BioLegend. By use of these products you accept the terms and conditions of all applicable Limited Use Label Licenses.

BioLegend Inc., 8999 BioLegend Way, San Diego, CA 92121 [www.biolegend.com](http://www.biolegend.com)  
 Toll-Free Phone: 1-877-Bio-Legend (246-5343) Phone: (858) 768-5800 Fax: (877) 455-9587