

GMP PE/Cyanine7 anti-human CD3 Antibody

Catalog# / Size	260206 / 100 tests
Clone	UCHT1
Workshop	III 471
Other Names	T3, CD3ε
Isotype	Mouse IgG1, κ
Description	CD3ε is a 20 kD chain of the CD3/T-cell receptor (TCR) complex which is composed of two CD3ε, one CD3γ, one CD3δ, one CD3ζ (CD247), and a T-cell receptor (α/β or γ/δ) heterodimer. It is found on all mature T cells, NKT cells, and some thymocytes. CD3, also known as T3, is a member of the immunoglobulin superfamily that plays a role in antigen recognition, signal transduction, and T cell activation.

Product Details

Reactivity	Human
Antibody Type	Monoclonal
Host Species	Mouse
Formulation	Phosphate-buffered solution, pH 7.2, containing True-Stain Monocyte Blocker™, 0.09% sodium azide and 0.2% (w/v) BSA (origin USA).
Preparation	The antibody was purified by affinity chromatography and conjugated with PE/Cyanine7 under optimal conditions.
Concentration	150 µg/mL
Storage & Handling	The antibody solution should be stored undiluted between 2°C and 8°C, and protected from prolonged exposure to light. Do not freeze.
Application	FC - Quality tested
Recommended Usage	Each lot of this antibody is quality control tested by immunofluorescent staining with flow cytometric analysis . For flow cytometric staining, the suggested use of this reagent is 5 µL per million cells in 100 µL staining volume or 5 µL per 100 µL of whole blood. It is recommended that the reagent be titrated for optimal performance for each application.
Excitation Laser	Blue Laser (488 nm) Green Laser (532 nm)/Yellow-Green Laser (561 nm)
Application Notes	Additional reported applications (for the relevant formats) include: immunohistochemical staining of acetone-fixed frozen sections ^{4,6,7} and formalin-fixed paraffin-embedded sections ¹¹ , immunoprecipitation ¹ , activation of T cells ^{2,3,5} , Western blotting ⁹ , and spatial biology (IBEX) ^{16,17} . The LEAF™ purified antibody (Endotoxin < 0.1 EU/µg, Azide-Free, 0.2 µm filtered) is recommended for functional assays (Cat. No. 300413, 300414, and 300432). For highly sensitive assays, we recommend Ultra-LEAF™ purified antibody (Cat. No. 300437, 300438, 300465, 300466, 300473, 300474) with a lower endotoxin limit than standard LEAF™ purified antibodies (Endotoxin < 0.01 EU/µg).
Application References	<ol style="list-style-type: none"> Salmeron A, <i>et al.</i> 1991. <i>J. Immunol.</i> 147:3047. (IP) Graves J, <i>et al.</i> 1991. <i>J. Immunol.</i> 146:2102. (Activ) Lafont V, <i>et al.</i> 2000. <i>J. Biol. Chem.</i> 275:19282. (Activ) Ryschich E, <i>et al.</i> 2003. <i>Tissue Antigens</i> 62:48. (IHC) Thompson AG, <i>et al.</i> 2004. <i>J. Immunol.</i> 173:1671. (Activ) Sakkas LI, <i>et al.</i> 1998. <i>Clin. Diagn. Lab. Immun.</i> 5:430. (IHC) Mack CL, <i>et al.</i> 2004. <i>Pediatr. Res.</i> 56:79. (IHC) Thakral D, <i>et al.</i> 2008. <i>J. Immunol.</i> 180:7431. (FC) PubMed Van Dongen JMM, <i>et al.</i> 1988. <i>Blood</i> 71:603. (WB) Yoshino N, <i>et al.</i> 2000. <i>Exp. Anim. (Tokyo)</i> 49:97. (FC) Pollard, K. <i>et al.</i> 1987. <i>J. Histochem. Cytochem.</i> 35:1329. (IHC)
(PubMed link indicates BioLegend citation)	

12. Luckashenak N, *et al.* 2013. *J. Immunol.* 190:27. [PubMed](#)
13. Laurent AJ, *et al.* 2014. *PLoS One.* 9:103683. [PubMed](#)
14. Li J, *et al.* 2015. *Cancer Res.* 75:508. [PubMed](#)
15. Stoeckius M, *et al.* 2017. *Nat. Methods.* 14:865-868. (PG)
16. Radtke AJ, *et al.* 2020. *Proc Natl Acad Sci USA.* 117:33455-33465. (SB) [PubMed](#)
17. Radtke AJ, *et al.* 2022. *Nat Protoc.* 17:378-401. (SB) [PubMed](#)

Disclaimer

GMP RUO Flow Cytometry Antibodies. BioLegend GMP RUO fluorophore conjugated antibodies are manufactured in a dedicated GMP facility and compliant with ISO 13485:2016. For research use only. Not for use in diagnostic or therapeutic procedures. Our processes include:

- Batch-to-batch consistency
- Material traceability
- Documented procedures
- Documented employee training
- Equipment maintenance and monitoring records
- Lot-specific certificates of analysis
- Quality audits per ISO 13485:2016
- QA review of released products

Antigen Details

Structure	Ig superfamily, with the subunits of CD3 γ , CD3 δ , CD3 ζ (CD247) and TCR (α/β or γ/δ) forms CD3/TCR complex, 20 kD
Distribution	Mature T and NK T cells, thymocyte differentiation
Function	Antigen recognition, signal transduction, T cell activation
Ligand/Receptor	Peptide antigen bound to MHC
Cell Type	NKT cells, T cells, Thymocytes, Tregs
Biology Area	Immunology, Innate Immunity
Molecular Family	CD Molecules, TCRs
Antigen References	<ol style="list-style-type: none"> 1. Barclay N, <i>et al.</i> 1993. <i>The Leucocyte FactsBook.</i> Academic Press. San Diego. 2. Beverly P, <i>et al.</i> 1981. <i>Eur. J. Immunol.</i> 11:329. 3. Lanier L, <i>et al.</i> 1986. <i>J. Immunol.</i> 137:2501-2507.
Gene ID	916

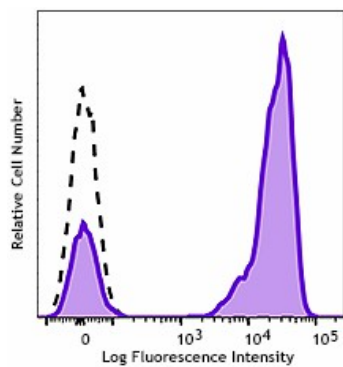
Related Protocols

[Cell Surface Flow Cytometry Staining Protocol](#)

Other Formats

APC anti-human CD3, Biotin anti-human CD3, FITC anti-human CD3, PE anti-human CD3, PE/Cyanine5 anti-human CD3, Purified anti-human CD3, Alexa Fluor® 647 anti-human CD3, Alexa Fluor® 488 anti-human CD3, Pacific Blue™ anti-human CD3, PE/Cyanine7 anti-human CD3, Alexa Fluor® 700 anti-human CD3, APC/Cyanine7 anti-human CD3, PerCP anti-human CD3, PerCP/Cyanine5.5 anti-human CD3, Brilliant Violet 421™ anti-human CD3, Brilliant Violet 570™ anti-human CD3, Ultra-LEAF™ Purified anti-human CD3, Purified anti-human CD3 (Maxpar® Ready), Alexa Fluor® 594 anti-human CD3, PE/Dazzle™ 594 anti-human CD3, Brilliant Violet 510™ anti-human CD3, Brilliant Violet 605™ anti-human CD3, Brilliant Violet 711™ anti-human CD3, Brilliant Violet 650™ anti-human CD3, APC/Fire™ 750 anti-human CD3, Brilliant Violet 785™ anti-human CD3, TotalSeq™-A0034 anti-human CD3, TotalSeq™-B0034 anti-human CD3, TotalSeq™-C0034 anti-human CD3, KIRAVIA Blue 520™ anti-human CD3, Spark Violet™ 538 anti-human CD3 Antibody, TotalSeq™-D0034 anti-human CD3, Spark Blue™ 574 anti-human CD3 Antibody, GMP Pacific Blue™ anti-human CD3, GMP PE anti-human CD3, GMP PE/Dazzle™ 594 anti-human CD3, Spark Violet™ 423 anti-human CD3

Product Data



Typical results from human peripheral blood lymphocytes stained either with SK7 PE/Cyanine7 used at 5 μ L/test (filled histogram) or with isotype control (open histogram).

For research use only. Not for resale. BioLegend will not be held responsible for patent infringement or other violations that may occur with the use of our products.

*These products may be covered by one or more Limited Use Label Licenses (see the BioLegend Catalog or our website, www.biolegend.com/ordering#license). BioLegend products may not be transferred to third parties, resold, modified for resale, or used to manufacture commercial products, reverse engineer functionally similar materials, or to provide a service to third parties without written approval of BioLegend. By use of these products you accept the terms and conditions of all applicable Limited Use Label Licenses.

8999 BioLegend Way, San Diego, CA 92121 www.biolegend.com
Toll-Free Phone: 1-877-Bio-Legend (246-5343) Phone: (858) 768-5800 Fax: (877) 455-9587