

GMP FITC anti-human CD36 Antibody

Catalog# / Size	260334 / 100 tests
Clone	5-271
Other Names	GP111b, GP1V
Isotype	Mouse IgG2a, κ
Description	CD36 is an 85 kD integral membrane glycoprotein, also known as GP111b, or GP1V. It is expressed on various epithelial and endothelial cells as well as erythrocytes, platelets, macrophages/monocytes and some macrophage-derived dendritic cells. CD36 functions as a scavenger receptor, binding thrombospondin, long chain fatty acids, oxidized LDL, collagen type I, IV, and V as well as apoptotic cells. The 5-271 antibody has been reported to be useful for flow cytometry.

Product Details

Reactivity	Human
Antibody Type	Monoclonal
Host Species	Mouse
Immunogen	Human platelets
Formulation	Phosphate-buffered solution, pH 7.2, containing 0.09% sodium azide and 0.2% (w/v) BSA (origin USA) and a stabilizer
Preparation	The antibody was purified by affinity chromatography and conjugated with FITC under optimal conditions.
Concentration	300 µg/mL
Storage & Handling	The antibody solution should be stored undiluted between 2°C and 8°C, and protected from prolonged exposure to light. Do not freeze.
Application	FC - Quality tested
Recommended Usage	Each lot of this antibody is quality control tested by immunofluorescent staining with flow cytometric analysis . For flow cytometric staining, the suggested use of this reagent is 5 µL per million cells in 100 µL staining volume or 5 µL per 100 µL of whole blood. It is recommended that the reagent be titrated for optimal performance for each application.
Excitation Laser	Blue Laser (488 nm)
Application Notes	Additional reported applications (for the relevant formats) include: immunofluorescence ² .
Application References	1. Stelner E, <i>et al.</i> 2006. <i>J. Cell Sci.</i> 119:459. 2. Stewart DA, <i>et al.</i> 2012. <i>Mol. Cancer Res.</i> 10:727. (IF)
(PubMed link indicates BioLegend citation)	
Disclaimer	GMP RUO Flow Cytometry Antibodies. BioLegend GMP RUO fluorophore conjugated antibodies are manufactured in a dedicated GMP facility and compliant with ISO 13485:2016. For research use only. Not for use in diagnostic or therapeutic procedures. Our processes include: <ul style="list-style-type: none">• Batch-to-batch consistency• Material traceability• Documented procedures• Documented employee training• Equipment maintenance and monitoring records• Lot-specific certificates of analysis• Quality audits per ISO 13485:2016• QA review of released products

Antigen Details

Structure	Integral membrane protein, CD36 family, single chain glycoprotein, 85-113 kD
Distribution	Expressed in various epithelial and endothelial cells, erythrocytes, platelets, monocytes/macrophages, some macrophage-derived dendritic cells
Function	Scavenger receptor for thrombospondin, long chain fatty acids, anionic phospholipids, oxidized LDL, collagen types I, IV and V. Involved in recognition and phagocytosis of apoptotic cells, cell adhesion.
Ligand/Receptor	Thrombospondin, anionic phospholipids, oxidized LDL, collage types I, IV, and V
Cell Type	Dendritic cells, Endothelial cells, Epithelial cells, Erythrocytes, Macrophages, Monocytes, Platelets
Biology Area	Cell Biology, Immunology, Innate Immunity, Neuroinflammation, Neuroscience
Molecular Family	CD Molecules
Antigen References	<ol style="list-style-type: none">1. Hogg N, <i>et al.</i> 1984. <i>Immunology</i> 53-753.2. Greenwalt DE, <i>et al.</i> 1992. <i>Blood</i> 80:1105.3. Armsesilla AL, <i>et al.</i> 1994. <i>J. Biol. Chem.</i> 269:18985.4. Endemann G, <i>et al.</i> 1993. <i>J. Biol. Chem.</i> 268:11811.
Gene ID	948

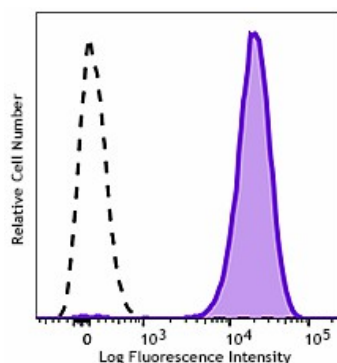
Related Protocols

[Cell Surface Flow Cytometry Staining Protocol](#)

Other Formats

Purified anti-human CD36, APC anti-human CD36, APC/Cyanine7 anti-human CD36, FITC anti-human CD36, PE anti-human CD36, Purified anti-human CD36 (Maxpar® Ready), Biotin anti-human CD36, APC/Fire™ 750 anti-human CD36, PE/Cyanine7 anti-human CD36, PerCP/Cyanine5.5 anti-human CD36, TotalSeq™-A0407 anti-human CD36, TotalSeq™-C0407 anti-human CD36, Brilliant Violet 421™ anti-human CD36, Alexa Fluor® 488 anti-human CD36, TotalSeq™-B0407 anti-human CD36, Alexa Fluor® 700 anti-human CD36 Antibody, TotalSeq™-D0407 anti-human CD36

Product Data



Typical results from human peripheral blood platelets stained either with 5-271 FITC used at 5 μ L/test (filled histogram) or with an isotype control (open histogram).

For research use only. Not for resale. BioLegend will not be held responsible for patent infringement or other violations that may occur with the use of our products.

*These products may be covered by one or more Limited Use Label Licenses (see the BioLegend Catalog or our website, www.biolegend.com/ordering#license). BioLegend products may not be transferred to third parties, resold, modified for resale, or used to manufacture commercial products, reverse engineer functionally similar materials, or to provide a service to third parties without written approval of BioLegend. By use of these products you accept the terms and conditions of all applicable Limited Use Label Licenses.

8999 BioLegend Way, San Diego, CA 92121 www.biolegend.com
Toll-Free Phone: 1-877-Bio-Legend (246-5343) Phone: (858) 768-5800 Fax: (877) 455-9587