

GMP PE/Cyanine7 anti-human CD335 (NKp46) Antibody

Catalog# / Size	260376 / 100 tests
Clone	9E2
Other Names	NKp46, NCR1
Isotype	Mouse IgG1, κ
Description	CD335, also known as NKp46, is a member of the natural cytotoxicity receptor (NCR) family which triggers cytotoxicity in NK cells. CD335 is directly involved in target cell recognition and lysis, and is exclusively expressed on CD3 ⁺ CD56 ⁺ NK cells, suggesting it is a universal marker for NK cells. NKp46, along with NKp30 and NKp44, is referred to as a natural cytotoxicity receptor (NCR) and plays a very important role in killing virus-infected tumor cells and MHC-class I-unprotected cells.

Product Details

Reactivity	Human
Antibody Type	Monoclonal
Host Species	Mouse
Immunogen	NKp46-Fc fusion protein
Formulation	Phosphate-buffered solution, pH 7.2, containing True-Stain Monocyte Blocker™, 0.09% sodium azide and 0.2% (w/v) BSA (origin USA) and a stabilizer.
Preparation	The antibody was purified by affinity chromatography and conjugated with PE/Cyanine7 under optimal conditions.
Concentration	25 μ g/mL
Storage & Handling	The antibody solution should be stored undiluted between 2°C and 8°C, and protected from prolonged exposure to light. Do not freeze.
Application	FC - Quality tested
Recommended Usage	Each lot of this antibody is quality control tested by immunofluorescent staining with flow cytometric analysis . For flow cytometric staining, the suggested use of this reagent is 5 μ L per million cells in 100 μ L staining volume or 5 μ L per 100 μ L of whole blood. It is recommended that the reagent be titrated for optimal performance for each application.
Excitation Laser	Blue Laser (488 nm) Green Laser (532 nm)/Yellow-Green Laser (561 nm)
Application Notes	Clone 9E2 has been shown to block NK activation through NKp46. ⁶
Application References	
(PubMed link indicates BioLegend citation)	<ol style="list-style-type: none">1. Nakajima H, <i>et al.</i> 2000. <i>Eur. J. Immunol.</i> 30:3309.2. Kalberer CP, <i>et al.</i> 2003. <i>Blood</i> 102:127.3. Chen Y, <i>et al.</i> 2007. <i>J. Immunol.</i> 179:2766.4. Jarahian M, <i>et al.</i> 2009. <i>J. Virol.</i> 83:8108. PubMed5. Correia DV, <i>et al.</i> 2011. <i>Blood</i> 118:992. (FC) PubMed6. Achdout H. <i>et al.</i> 2010. <i>J. Virol.</i> 84:3993.

Disclaimer

GMP RUO Flow Cytometry Antibodies. BioLegend GMP RUO fluorophore conjugated antibodies are manufactured in a dedicated GMP facility and compliant with ISO 13485:2016. For research use only. Not for use in diagnostic or therapeutic procedures. Our processes include:

- Batch-to-batch consistency
- Material traceability
- Documented procedures
- Documented employee training
- Equipment maintenance and monitoring records
- Lot-specific certificates of analysis
- Quality audits per ISO 13485:2016
- QA review of released products

Antigen Details

Structure	Type I membrane glycoprotein (46 kD)
Distribution	Expressed on resting and activated NK cells
Cell Type	NK cells
Biology Area	Immunology, Innate Immunity
Molecular Family	CD Molecules
Antigen References	1. Mandelboim O and Porgador A. 2001. <i>Int. J. Biochem. Cell Biol.</i> 33:1147. 2. Nakajima H, <i>et al.</i> 2000. <i>Eur. J. Immunol.</i> 30:3309. 3. Sivori S. 1999. <i>Eur. J. Immunol.</i> 29:1656.
Gene ID	9437

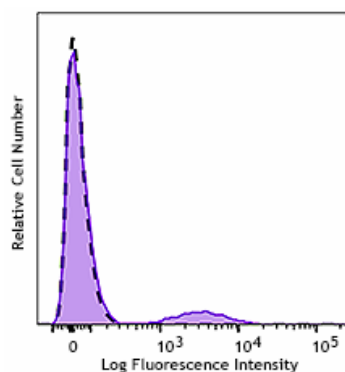
Related Protocols

- [Cell Surface Flow Cytometry Staining Protocol](#)

Other Formats

Purified anti-human CD335 (NKp46), Biotin anti-human CD335 (NKp46), PE anti-human CD335 (NKp46), Alexa Fluor® 647 anti-human CD335 (NKp46), Pacific Blue™ anti-human CD335 (NKp46), Brilliant Violet 421™ anti-human CD335 (NKp46), PerCP/Cyanine5.5 anti-human CD335 (NKp46), APC anti-human CD335 (NKp46), PE/Cyanine7 anti-human CD335 (NKp46), FITC anti-human CD335 (NKp46), Brilliant Violet 510™ anti-human CD335 (NKp46), Brilliant Violet 605™ anti-human CD335 (NKp46), Brilliant Violet 650™ anti-human CD335 (NKp46), PE/Dazzle™ 594 anti-human CD335 (NKp46), Alexa Fluor® 700 anti-human CD335 (NKp46), Brilliant Violet 711™ anti-human CD335 (NKp46), APC/Fire™ 750 anti-human CD335 (NKp46), Alexa Fluor® 488 anti-human CD335 (NKp46), TotalSeq™-B0101 anti-human CD335 (NKp46), TotalSeq™-C0101 anti-human CD335 (NKp46), TotalSeq™-A0101 anti-human CD335 (NKp46), Brilliant Violet 785™ anti-human CD335 (NKp46), Ultra-LEAF™ Purified anti-human CD335 (NKp46), APC/Cyanine7 anti-human CD335 (NKp46) Antibody, PE/Cyanine5 anti-human CD335 (NKp46), PE/Fire™ 810 anti-human CD335 (NKp46), TotalSeq™-D0101 anti-human CD335 (NKp46), PE/Cyanine7 anti-human CD335, Spark Red™ 718 anti-human CD335 (NKp46) (Flexi-Fluor™)

Product Data



Typical results from human peripheral blood lymphocytes stained either with 9E2 PE/Cyanine7 used at 5 µL/test (filled histogram) or with an isotype control (open histogram).

For Research Use Only. Suitable for *ex vivo* cell processing. Not for injection or diagnostic or therapeutic use.

This product is supplied subject to the terms and conditions, including the limited license, located at www.biolegend.com/terms ("Terms") and may be used only as provided in the Terms. Without limiting the foregoing, BioLegend products may not be used for any Commercial Purpose as defined in the Terms, resold in any form, used in manufacturing, or reverse engineered, sequenced, or otherwise studied or used to learn its design or composition without express written approval of BioLegend. Regardless of the information given in this document, user is solely responsible for determining any license requirements necessary for user's intended use and assumes all risk and liability arising from use of the product. BioLegend is not responsible for patent infringement or any other risks or liabilities whatsoever resulting from the use of its products.

BioLegend, the BioLegend logo, and all other trademarks are property of BioLegend, Inc. or their respective owners, and all rights are reserved.

8999 BioLegend Way, San Diego, CA 92121 www.biolegend.com
Toll-Free Phone: 1-877-Bio-Legend (246-5343) Phone: (858) 768-5800 Fax: (877) 455-9587