

## GMP PerCP/Cyanine5.5 anti-human CD28 Antibody

<b>Catalog# / Size</b>	260378 / 100 tests
<b>Clone</b>	CD28.2
<b>Workshop</b>	V-CD28.05
<b>Other Names</b>	T44, Tp44
<b>Isotype</b>	Mouse IgG1, $\kappa$
<b>Description</b>	CD28 is a 44 kD disulfide-linked homodimeric type I glycoprotein. It is a member of the immunoglobulin superfamily and is also known as T44 or Tp44. CD28 is expressed on most T lineage cells, NK cell subsets, and plasma cells. CD28 binds both CD80 and CD86 using a highly conserved motif MYPPY in the CDR3-like loop. CD28 is considered a major co-stimulatory molecule, inducing T lymphocyte activation and IL-2 synthesis, and preventing cell death. <i>In vitro</i> studies indicate that ligation of CD28 on T cells by CD80 and CD86 on antigen presenting cells provides a costimulatory signal required for T cell activation and proliferation.

### Product Details

---

<b>Reactivity</b>	Human
<b>Reported Reactivity</b>	Baboon, Capuchin Monkey, Chimpanzee, Pigtailed Macaque, Sooty Mangabey, Squirrel Monkey
<b>Antibody Type</b>	Monoclonal
<b>Host Species</b>	Mouse
<b>Formulation</b>	Phosphate-buffered solution, pH 7.2, containing True-Stain Monocyte Blocker™, 0.09% sodium azide and 0.2% (w/v) BSA (origin USA) and a stabilizer.
<b>Preparation</b>	The antibody was purified by affinity chromatography and conjugated with PerCP/Cyanine5.5 under optimal conditions.
<b>Concentration</b>	200 $\mu\text{g}/\text{mL}$
<b>Storage &amp; Handling</b>	The antibody solution should be stored undiluted between 2°C and 8°C, and protected from prolonged exposure to light. <b>Do not freeze.</b>
<b>Application</b>	<a href="#">FC - Quality tested</a>
<b>Recommended Usage</b>	Each lot of this antibody is quality control tested by <a href="#">immunofluorescent staining with flow cytometric analysis</a> . For flow cytometric staining, the suggested use of this reagent is 5 $\mu\text{L}$ per million cells in 100 $\mu\text{L}$ staining volume or 5 $\mu\text{L}$ per 100 $\mu\text{L}$ of whole blood. It is recommended that the reagent be titrated for optimal performance for each application.  * PerCP/Cyanine5.5 has a maximum absorption of 482 nm and a maximum emission of 690 nm.
<b>Excitation Laser</b>	Blue Laser (488 nm)
<b>Application Notes</b>	The Ultra-LEAF™ Purified antibody (Endotoxin < 0.01 EU/ $\mu\text{g}$ , Azide-Free, 0.2 $\mu\text{m}$ filtered) is recommended for highly sensitive assays.

## Application References

(PubMed link indicates BioLegend citation)

1. Schlossman S, *et al.* Eds. 1995. Leucocyte Typing V. Oxford University Press. New York.
2. Nunes J, *et al.* 1993. *Biochem. J.* 293:835.
3. Calea-Lauri J, *et al.* 1999. *J. Immunol.* 163:62.
4. Tazi A, *et al.* 1999. *J. Immunol.* 163:3511. (IHC)
5. Marti F, *et al.* 2001. *J. Immunol.* 166:197. (Costim)
6. Jeong SH, *et al.* 2004. *J. Virol.* 78:6995. (Costim)
7. Rivollier A, *et al.* 2004. *Blood* 104:4029. (Costim)
8. Scharschmidt E, *et al.* 2004. *Mol. Cell Biol.* 24:3860. (Costim)
9. Sheng W, *et al.* 2007. *Elsevier* 580:6819. [PubMed](#)
10. Mitsuhashi M. 2007. *Clin Chem.*53:148. [PubMed](#)
11. Ye Z, *et al.* 2008. *Infect. Immun.* 76:2541. [PubMed](#)
12. Magatti M, *et al.* 2008. *Stem Cells* 26:182. (FA) [PubMed](#)

[See More](#)

## Disclaimer

**GMP RUO Flow Cytometry Antibodies.** BioLegend GMP RUO fluorophore conjugated antibodies are manufactured in a dedicated GMP facility and compliant with ISO 13485:2016. For research use only. Not for use in diagnostic or therapeutic procedures. Our processes include:

- Batch-to-batch consistency
- Material traceability
- Documented procedures
- Documented employee training
- Equipment maintenance and monitoring records
- Lot-specific certificates of analysis
- Quality audits per ISO 13485:2016
- QA review of released products

## Antigen Details

---

<b>Structure</b>	Ig superfamily, type I transmembrane glycoprotein, homodimer, 44 kD
<b>Distribution</b>	Mature T cells, thymocytes, NK cell subsets, plasma cells, EBV-positive B cells
<b>Function</b>	T cell costimulation
<b>Ligand/Receptor</b>	CD80, CD86
<b>Cell Type</b>	B cells, NK cells, Plasma cells, T cells, Thymocytes, Tregs
<b>Biology Area</b>	Costimulatory Molecules, Immunology
<b>Molecular Family</b>	CD Molecules
<b>Antigen References</b>	<ol style="list-style-type: none"><li>1. Schlossman S, <i>et al.</i> Eds. 1995. Leucocyte Typing V. Oxford University Press. New York.</li><li>2. June CH, <i>et al.</i> 1994. <i>Immunol. Today</i> 15:321.</li><li>3. Linskey PS, <i>et al.</i> 1993. <i>Annu. Rev. Immunol.</i> 11:191.</li></ol>
<b>Gene ID</b>	<a href="#">940</a>

## Related Protocols

---

- [Cell Surface Flow Cytometry Staining Protocol](#)

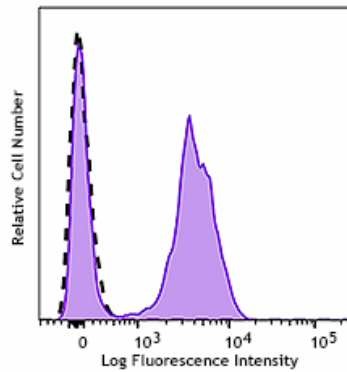
## Other Formats

---

APC anti-human CD28, Biotin anti-human CD28, FITC anti-human CD28, PE anti-human CD28, PE/Cyanine5 anti-human CD28, Purified anti-human CD28, Alexa Fluor® 488 anti-human CD28, Alexa Fluor® 700 anti-human CD28, PerCP/Cyanine5.5 anti-human CD28, Pacific Blue™ anti-human CD28, PE/Cyanine7 anti-human CD28, Ultra-LEAF™ Purified anti-human CD28, Brilliant Violet 421™ anti-human CD28, Brilliant Violet 510™ anti-human CD28, Purified anti-human CD28 (Maxpar® Ready), PE/Dazzle™ 594 anti-human CD28, Brilliant Violet 785™ anti-human CD28, Brilliant Violet 650™ anti-human CD28, Brilliant Violet 711™ anti-human CD28, APC/Fire™ 750 anti-human CD28, Alexa Fluor® 647 anti-human CD28, TotalSeq™-A0386 anti-human CD28, TotalSeq™-B0386 anti-human CD28, TotalSeq™-C0386 anti-human CD28, Brilliant Violet 605™ anti-human CD28, APC/Cyanine7 anti-human CD28, Brilliant Violet 750™ anti-human CD28, PE/Fire™ 810 anti-human CD28, GMP PE anti-human CD28, TotalSeq™-D0386 anti-human CD28, Spark Violet™ 423 anti-human CD28, GMP Ultra-LEAF™ Purified anti-human CD28 SF,

## Product Data

---



Typical results from human peripheral blood lymphocytes stained either with CD28.2 PerCP/Cyanine5.5 used at 5  $\mu$ L/test (filled histogram) or with an isotype control (open histogram).

For Research Use Only. Suitable for *ex vivo* cell processing. Not for injection or diagnostic or therapeutic use.

This product is supplied subject to the terms and conditions, including the limited license, located at [www.biolegend.com/terms](http://www.biolegend.com/terms) ("Terms") and may be used only as provided in the Terms. Without limiting the foregoing, BioLegend products may not be used for any Commercial Purpose as defined in the Terms, resold in any form, used in manufacturing, or reverse engineered, sequenced, or otherwise studied or used to learn its design or composition without express written approval of BioLegend. Regardless of the information given in this document, user is solely responsible for determining any license requirements necessary for user's intended use and assumes all risk and liability arising from use of the product. BioLegend is not responsible for patent infringement or any other risks or liabilities whatsoever resulting from the use of its products.

BioLegend, the BioLegend logo, and all other trademarks are property of BioLegend, Inc. or their respective owners, and all rights are reserved.

8999 BioLegend Way, San Diego, CA 92121 [www.biolegend.com](http://www.biolegend.com)  
Toll-Free Phone: 1-877-Bio-Legend (246-5343) Phone: (858) 768-5800 Fax: (877) 455-9587