

GMP PerCP/Cyanine5.5 anti-human CD22 Antibody

Catalog# / Size	260390 / 100 tests
Clone	HIB22
Workshop	V CD22.14
Other Names	BL-CAM, Siglec-2, Lyb8
Isotype	Mouse IgG1, κ
Description	CD22 is a 130 kD type I transmembrane glycoprotein also known as Siglec-2 and BL-CAM. It is a member of the immunoglobulin superfamily (sialoadhesion subgroup). CD22 is expressed in the cytoplasm of pro-B and pre-B cells, and on the surface of mature B and activated B cells, but not on plasma cells. CD22 is present in the B cell receptor complex and associates with SHP-1, Syk, Lck, Lyn, and phospholipase C γ 1. A primary function of CD22 is thought to be in limiting antigen receptor signaling by modulating B cell activation threshold. CD22 has been shown to bind to CD45RO and CD75, although the natural ligands for this molecule remain controversial.

Product Details

Reactivity	Human
Reported Reactivity	Chimpanzee
Antibody Type	Monoclonal
Host Species	Mouse
Formulation	Phosphate-buffered solution, pH 7.2, containing True-Stain Monocyte Blocker™, 0.09% sodium azide and 0.2% (w/v) BSA (origin USA) and a stabilizer.
Preparation	The antibody was purified by affinity chromatography and conjugated with PerCP/Cyanine5.5 under optimal conditions.
Concentration	200 μ g/mL
Storage & Handling	The antibody solution should be stored undiluted between 2°C and 8°C, and protected from prolonged exposure to light. Do not freeze.
Application	FC- Quality tested
Recommended Usage	Each lot of this antibody is quality control tested by immunofluorescent staining with flow cytometric analysis . For flow cytometric staining, the suggested use of this reagent is 5 μ L per million cells in 100 μ L staining volume or 5 μ L per 100 μ L of whole blood. It is recommended that the reagent be titrated for optimal performance for each application. * PerCP/Cyanine5.5 has a maximum absorption of 482 nm and a maximum emission of 690 nm.
Excitation Laser	Blue Laser (488 nm)
Application Notes	Additional reported applications (for the relevant formats) include: immunohistochemical staining of acetone-fixed frozen tissue sections.
Application References	
(PubMed link indicates BioLegend citation)	<ol style="list-style-type: none">Schlossman S, et al. Eds. 1995. Leukocyte Typing V: White Cell Differentiation Antigens. Oxford University Press. New York.Clark E. 1993. <i>J. Immunol.</i> 150:4715.Shan D and O. Press. 1995. <i>J. Immunol.</i> 154:4466.

Disclaimer **GMP RUO Flow Cytometry Antibodies.** BioLegend GMP RUO fluorophore conjugated antibodies are manufactured in a dedicated GMP facility and compliant with ISO 13485:2016. For research use only. Not for use in diagnostic or therapeutic procedures. Our processes include:

- Batch-to-batch consistency
- Material traceability
- Documented procedures
- Documented employee training
- Equipment maintenance and monitoring records
- Lot-specific certificates of analysis
- Quality audits per ISO 13485:2016
- QA review of released products

Antigen Details

Structure	Ig superfamily, a type I glycosylated integral transmembrane protein, 120-130 kD
Distribution	B cells
Function	Adhesion, B-monocyte and B-T interactions
Ligand/Receptor	CD45RO, CD75
Cell Type	B cells
Biology Area	Cell Adhesion, Cell Biology, Immunology
Molecular Family	Adhesion Molecules, CD Molecules, Siglec Molecules
Antigen References	1. Clark E. 1993. <i>J. Immunol.</i> 150:4715. 2. Shan D, <i>et al.</i> 1995. <i>J. Immunol.</i> 154:4466.
Gene ID	933

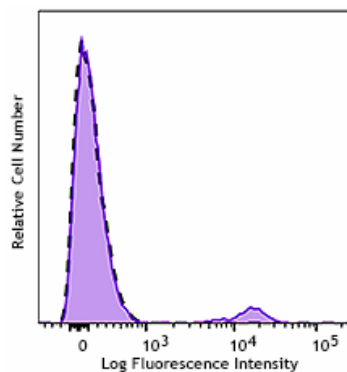
Related Protocols

- [Cell Surface Flow Cytometry Staining Protocol](#)

Other Formats

FITC anti-human CD22, PE anti-human CD22, PE/Cyanine5 anti-human CD22, Purified anti-human CD22, APC anti-human CD22, PE/Cyanine7 anti-human CD22, PerCP/Cyanine5.5 anti-human CD22, Purified anti-human CD22 (Maxpar® Ready), Alexa Fluor® 647 anti-human CD22, APC/Fire™ 750 anti-human CD22, Brilliant Violet 421™ anti-human CD22, Brilliant Violet 510™ anti-human CD22, APC/Cyanine7 anti-human CD22, PE/Dazzle™ 594 anti-human CD22, Spark Violet™ 423 anti-human CD22

Product Data



Typical results from human peripheral blood lymphocytes stained either with HIB22 PerCP/Cyanine5.5 used at 5 μ L/test (filled histogram) or with an isotype control (open histogram).

This product is supplied subject to the terms and conditions, including the limited license, located at www.biolegend.com/terms ("Terms") and may be used only as provided in the Terms. Without limiting the foregoing, BioLegend products may not be used for any Commercial Purpose as defined in the Terms, resold in any form, used in manufacturing, or reverse engineered, sequenced, or otherwise studied or used to learn its design or composition without express written approval of BioLegend. Regardless of the information given in this document, user is solely responsible for determining any license requirements necessary for user's intended use and assumes all risk and liability arising from use of the product. BioLegend is not responsible for patent infringement or any other risks or liabilities whatsoever resulting from the use of its products.

BioLegend, the BioLegend logo, and all other trademarks are property of BioLegend, Inc. or their respective owners, and all rights are reserved.

8999 BioLegend Way, San Diego, CA 92121 www.biolegend.com
Toll-Free Phone: 1-877-Bio-Legend (246-5343) Phone: (858) 768-5800 Fax: (877) 455-9587