

BioLegend[®]

LEGENDplex[™]
Multi-Analyte Flow Assay Kit

Cat. No. 741331

SARS-CoV-2 Variants Neut. Ab Panel (6-plex)
with Filter Plate

Cat. No. 741332

SARS-CoV-2 Variants Neut. Ab Panel (6-plex)
with V-Bottom Plate

Please read the entire manual before running the assay.

BioLegend.com

It is highly recommended that this manual be read in its entirety before using this product. Do not use this kit beyond the expiration date.

For Research Purposes Only. Not for use in diagnostic or therapeutic procedures. Purchase does not include or carry the right to resell or transfer this product either as a stand-alone product or as a component of another product. Any use of this product other than the permitted use without the express written authorization of BioLegend is strictly prohibited.

Table of Contents	Page
Chapter 1: KIT DESCRIPTION	3
Introduction.....	3
Principle of the Assay.....	3
Beads Usage.....	3
Storage Information.....	5
Materials Supplied.....	5
Materials to be Provided by the End-User.....	6
Precautions.....	7
Chapter 2: ASSAY PREPARATION	8
Sample Collection and Handling.....	8
Reagent Preparation.....	8
Standard Preparation.....	9
Sample Dilution.....	10
Chapter 3: ASSAY PROCEDURE	11
Performing the Assay Using a Filter Plate.....	11
Performing the Assay Using a V-bottom Plate.....	14
Chapter 4: FLOW CYTOMETER SETUP	17
Chapter 5: DATA ACQUISITION AND ANALYSIS	17
Data Acquisition.....	17
Data Analysis.....	18
Chapter 6: ASSAY CHARACTERIZATION	19
Representative Standard Curve.....	19
Assay Sensitivity.....	19
Cross-Reactivity.....	20
Accuracy.....	20
Linearity of Dilution.....	20

LEGENDplex™ SARS-CoV-2 Variants Neut. Ab Panel (6-plex)

Intra-Assay Precision..... 21

Inter-Assay Precision..... 21

Biological Samples..... 22

TROUBLESHOOTING..... 24

PLATE MAP..... 27

Chapter 1: KIT DESCRIPTION

Introduction

SARS-CoV-2 continuously evolves as changes in the genetic code occur during replication of the genome. SARS-CoV-2 variants have been emerging and circulating around the world since the beginning of the COVID-19 pandemic, e.g. Alpha (B.1.1.7, first identified in United Kingdom), Beta (B.1.351, first identified in South Africa), Gamma (P.1, first identified in Brazil), Delta (B.1.617.2, first identified in India), etc. The Omicron variant (B.1.1.529) emerged in November, 2021 in South Africa and it quickly spreads throughout the world.

This assay is for research use only.

Principle of the Assay

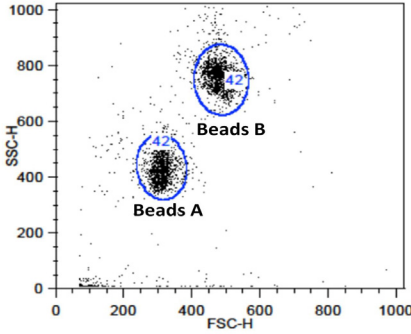
LEGENDplex™ SARS-CoV-2 Variants Neut. Ab Panel (6-plex) is a multiplex bead-based competitive assay. Capture beads are pre-coated with six SARS-CoV-2 Spike protein Variants (Alpha, Beta, Gamma, Delta, Omicron, and Wild type S1 protein) conjugated onto fluorochrome-coded beads. Biotinylated ACE2 protein serving as the Detection reagent will be added to all wells after adding the beads. Standard (anti-SARS-CoV-2 S Protein S1 antibody) or samples and Detection reagent will compete to bind to the capture beads, producing a competitive assay. Streptavidin-phycoerythrin (SA-PE) is subsequently added, which will bind to the biotinylated detection reagent, providing fluorescent signal intensities in proportion to the amount of bound analytes. The concentration of a neutralization antibody is determined using a standard curve generated in the same assay. Due to the nature of the assay, the standard curve will have the highest signal at the lowest standard neutralization antibody concentration and the signal will decrease as the standard neutralization antibody concentration increases.

Beads Usage

The LEGENDplex™ bead-based assay usually includes two sets of beads. Each set has a unique size that can be identified on flow cytometer based on their forward scatter (FSC) and side scatter (SSC) profiles (Beads A and Beads B, Figure 1). Each bead set can be further resolved based on their internal fluorescence intensities. The internal dye can be detected using FL3, FL4, or APC channel, depending on the type of flow cytometer used. The smaller Beads A consists of 6 bead populations and the larger Beads B consists of 7 bead populations (Figure 2-3).

The SARS-Cov-2 Variants Neut. Ab Panel (6-plex) uses only 6 of the 13 bead populations (B2, B3, B5, B6, B7, B9) distinguished by size and internal fluorescent dye.

Figure 1. Beads Differentiated by Size



Beads A = smaller beads
Beads B = larger beads

Figure 2. Beads A Classification by FL4

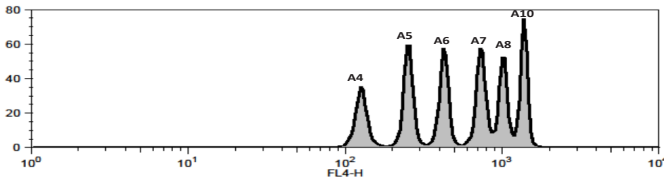
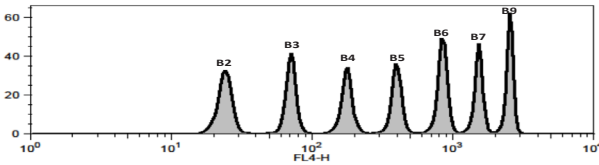


Figure 3. Beads B Classification by FL4



LEGENDplex™ SARS-CoV-2 Variants Neut. Ab Panel (6-plex)

Table 1. Beads ID and Target Information*

Target	Bead ID*	Top Standard Concentrations
SARS-CoV-2 Variant Alpha Neut. Ab	B2	The top standard concentration of Neut. Ab may vary and be subject to change from lot to lot. Please refer to the lot-specific Certificate of Analysis (CoA) for this information
SARS-CoV-2 Variant Beta Neut. Ab	B3	
SARS-CoV-2 Variant Omicron Neut. Ab	B5	
SARS-CoV-2 Variant Gamma Neut. Ab	B6	
SARS-CoV-2 Wild Type Neut. Ab	B7	
SARS-CoV-2 Variant Delta Neut. Ab	B9	

*Bead ID is used to associate a bead population to a particular analyte in the LEGENDplex™ Data Analysis Software. The association of analyte and bead ID will be defined during the gating step of the data analysis. Please refer to the LEGENDplex™ Data Analysis Software User Guide and Online Help for details (www.biolegend.com/legendplex).

Storage Information

Recommended storage for all original kit components is between 2°C and 8°C. DO NOT FREEZE Beads, Detection Antibodies or SA-PE.

- Once the standards have been sufficiently reconstituted, immediately transfer contents into polypropylene vials. DO NOT STORE RECONSTITUTED STANDARDS IN GLASS VIALS.
- Upon reconstitution, leftover top standard should be stored at ≤-70°C for use within one month. Avoid multiple (>2) freeze-thaw cycles. Discard any leftover diluted standards.

Materials Supplied

The LEGENDplex™ kit contains reagents for 100 tests, listed in the table below. When assayed in duplicate, this is enough for an 8-point standard curve and 40 samples.

Kit Components	Quantity	Volume	Part #
Setup Beads: PE Beads	1 vial	1 mL	77842
Setup Beads: Raw Beads	1 vial	1.8 mL	77844
SARS-CoV-2 Variants Neut. Ab Premix Beads (6-plex)	1 bottle	3.3 mL	750003011
SARS-CoV-2 Variants Neut. Ab Panel (6-x) Detection	1 bottle	3.3 mL	750003014
SARS-CoV-2 Variants Neut. Ab Panel (6-x) Standard	1 vial	Lyophilized	750003013
LEGENDplex™ SA-PE	1 bottle	3.3 mL	77743
LEGENDplex™ Assay Buffer	1 bottle	25 mL	77562

LEGENDplex™ SARS-CoV-2 Variants Neut. Ab Panel (6-plex)

Kit Components	Quantity	Volume	Part #
LEGENDplex™ Wash Buffer, 20X	1 bottle	25 mL	77564
Filter Plate*** or V-bottom Plate****	1 plate		740377* or 740379**
Plate Sealers	4 sheets		78101

Either a filter plate* or a V-bottom plate** will be provided in each kit.

Materials to be Provided by the End-User

- A flow cytometer equipped with two lasers (e.g., a 488 nm blue laser or 532 nm green laser and a 633-635 nm red laser) capable of distinguishing 575 nm and 660 nm or a flow cytometer equipped with one laser (e.g., 488 nm blue laser) capable of distinguishing 575 nm and 670 nm.

Partial list of compatible flow cytometers:

Flow Cytometer	Reporter Channel	Reporter Emission	Classification Channel	Channel Emission	Compensation needed?
BD Accuri™ C6	FL2	585 nm	FL4	675 nm	No*
BD FACSCanto™, BD FACSCanto™ II	PE	575 nm	APC	660 nm	No*
BD™ LSR, LSR II BD LSRFortessa™	PE	575 nm	APC	660 nm	No*
Gallios™	PE	575 nm	APC	660 nm	No*
CytoFLEX	PE	585 nm	APC	660 nm	No*
NovoCyte	PE	572 nm	APC	660 nm	No*
Attune™ NxT	PE	574 nm	APC	670 nm	No*

*Compensation is not required for the specified flow cytometers when set up properly.

For setting up various flow cytometers, please visit: www.biolegend.com/legendplex and click on the **Instrument Setup** tab.

- Multichannel pipettes capable of dispensing 5 µL to 200 µL
- Reagent reservoirs for multichannel pipette
- Polypropylene microfuge tubes (1.5 mL)
- Micro FACS tubes, 1.1 mL (if the flow cytometer does not contain an autosampler)
- Laboratory vortex mixer
- Sonicator bath (e.g., Branson Ultrasonic Cleaner model #B200, or equivalent)
- Aluminum foil

LEGENDplex™ SARS-CoV-2 Variants Neut. Ab Panel (6-plex)

- Absorbent pads or paper towels
- Plate shaker (e.g., Lab-Line Instruments model #4625, or equivalent)
- Tabletop centrifuges (e.g., Eppendorf centrifuge 5415 C, or equivalent)

If the assay is performed in a filter plate (recommended):

- A vacuum filtration unit (Millipore MultiScreen® HTS Vacuum Manifold, cat # MSVMHTS00 or equivalent). Instructions on how to use the vacuum manifold can be found at the supplier's website.
- A vacuum source (mini vacuum pump or line vacuum, e.g., Millipore Vacuum Pump, catalog # WP6111560, or equivalent)
- If needed, additional Filter plates can be ordered from BioLegend (Cat# 740377 or 740378).

If the assay is performed in a V-bottom plate (optional):

- Centrifuge with a swinging bucket adaptor for microtiter plates (e.g., Beckman Coulter Allegra™ 6R Centrifuge with MICROPLUS CARRIER adaptor for GH3.8 and JS4.3 Rotors) .
- If needed, additional V-bottom plates can be ordered from BioLegend (Cat# 740379).

Precautions

- All blood components and biological materials should be handled as potentially hazardous. Follow universal precautions as established by the Center for Disease Control and Prevention and by the Occupational Safety and Health Administration when handling and disposing of infectious agents.
- Sodium azide has been added to some reagents as a preservative. Although the concentrations are low, sodium azide may react with lead and copper plumbing to form highly explosive metal azides. On disposal, flush with a large volume of water to prevent azide build-up.
- Do not mix or substitute reagents from different kits or lots. Reagents from different manufacturers should not be used with this kit.
- Do not use this kit beyond its expiration date.
- SA-PE and beads are light-sensitive. Minimize light exposure.

Chapter 2: ASSAY PREPARATION

Sample Collection and Handling

Preparation of Serum Samples:

- Allow the blood to clot for at least 30 minutes and centrifuge for 20 minutes at 1,000 x *g*.
- Remove serum and assay immediately or aliquot and store samples at ≤-20°C. Avoid multiple (>2) freeze/thaw cycles.
- When using frozen samples, it is recommended that samples be thawed completely, mixed and centrifuged to remove particulates prior to use.

Preparation of Plasma Samples:

- Plasma collection should be collected using an anti-coagulant (e.g., EDTA). Centrifuge for 20 minutes at 1,000 x *g* within 30 minutes of blood collection.
- Remove plasma and assay immediately, or aliquot and store samples at ≤-20°C. Avoid multiple (>2) freeze/thaw cycles.
- When using frozen samples, it is recommended that samples be thawed completely, mixed well and centrifuged to remove particulates.

Reagent Preparation

Preparation of Beads

Sonicate the beads bottle for 1 minute in a sonicator bath and then vortex for 30 seconds prior to use. If no sonicator bath is available, increase the vortexing time to 1 minute to completely resuspend the beads.

Preparation of Wash Buffer

- Bring the 20X Wash Buffer to room temperature and mix to bring all salts into solution.
- Dilute 25 mL of 20X Wash Buffer with 475 mL deionized water. Store unused portions between 2°C and 8°C for up to one month.

Standard Preparation

1. Prior to use, reconstitute the lyophilized SARS-CoV-2 Variants Neut. Ab Panel Standard with 250 µL LEGENDplex™ Assay Buffer.
2. Mix and allow the vial to sit at room temperature for 15 minutes, and then transfer the standard to an appropriately labeled polypropylene microcentrifuge tube. This will be used as the top standard C7.

Note: The top standard concentrations of analytes in this panel were set at various concentrations, but may be subject to change from lot to lot (see lot-specific Certificate of Analysis provided in the kit box for details).

3. Label 6 polypropylene microcentrifuge tubes as C6, C5, C4, C3, C2 and C1, respectively.
4. Add 100 µL of Assay Buffer to each of the six tubes. Prepare 1:3 dilution of the top standard by transferring 50 µL of the top standard C7 to the C6 tube and mix well. This will be the C6 standard.
5. In the same manner, perform serial 1:3 dilutions to obtain C5, C4, C3, C2 and C1 standards (see the table below using the top standard at 100,000 ng/mL as an example). Assay Buffer will be used as the 0 ng/mL standard (C0).

Tube/Standard ID	Serial Dilution	Assay Buffer to add (µL)	Standard to add	Final Conc. (ng/mL)
C7	--	--	--	100,000
C6	1:3	100	50 µL of C7	33,333
C5	1:9	100	50 µL of C6	11,111
C4	1:27	100	50 µL of C5	3,703.7
C3	1:81	100	50 µL of C4	1,234.6
C2	1:243	100	50 µL of C3	411.5
C1	1:729	100	50 µL of C2	137.2
C0	--	100	--	0

LEGENDplex™ SARS-CoV-2 Variants Neut. Ab Panel (6-plex)

Sample Dilution

For serum and plasma samples, follow dilution recommendations below:
Serum or plasma samples are recommended to be diluted 100-fold with Assay Buffer as described in the table below.

Sample	Dilution	Final Dilution Fold
Serum, Plasma	2 μ L + 198 μ L (Assay Buffer)	100

Chapter 3: ASSAY PROCEDURE

The LEGENDplex™ assay can be performed in a filter plate, or in a V-bottom plate.

- The Filter plate assay procedure is recommended due to its good sample to sample consistency, assay robustness and ease of handling. This procedure requires a vacuum filtration unit for washing (see **Materials to be Provided by the End-User, page 6**). If you have performed bead-based multiplex assays before, your lab may already have the vacuum filtration unit set up.
- If the Filter plate assay procedure is not possible or if you prefer, the assay can be performed in a V-bottom plate.

Performing the Assay Using a Filter Plate

- Allow all reagents to warm to room temperature (20-25°C) before use.
 - Set the filter plate on an inverted plate cover at all times during assay setup and incubation steps, so that the bottom of the plate does not touch any surface. Touching a surface may cause leakage.
 - Keep the plate upright during the entire assay procedure, including the washing steps, to avoid losing beads.
 - The plate should be placed in the dark or wrapped with aluminum foil for all incubation steps.
 - **Standards and samples should be run in duplicate and arranged on the plate in a vertical configuration convenient for data acquisition and analysis (as shown in attached PLATE MAP, page 27). Be sure to load standards in the first two columns. If an automation device is used for reading, the orientation and reading sequence should be carefully planned.**
1. Pre-wet the plate by adding 100 µL of LEGENDplex™ 1X Wash Buffer to each well and let it sit for 1 minute at room temperature. To remove the excess volume, place the plate on the vacuum manifold and apply vacuum. Do not exceed 10" Hg of vacuum. Vacuum until wells are drained (5-10 seconds). Blot excess Wash Buffer from the bottom of the plate by pressing the plate on a stack of clean paper towels. Place the plate on top of the inverted plate cover.

For measuring serum or plasma samples, load the plate as shown in the table below (in the order from left to right):

	Assay Buffer	Standard	Sample*
Standard Wells	25 µL	25 µL	---
Sample Wells	25 µL	---	25 µL

*See **Sample Dilution on page 10**

LEGENDplex™ SARS-CoV-2 Variants Neut. Ab Panel (6-plex)

2. Vortex mixed beads bottle for 30 seconds. Add 25 μL of beads to each well. The volume should be 75 μL in each well after beads addition. (Note: During addition of the beads, shake mixed beads bottle intermittently to avoid bead settling).
3. Add 25 μL of Detection to each well.
4. Seal the plate with a plate sealer. **To avoid plate leaking, do not apply positive pressure to the sealer when sealing the plate.** Wrap the entire plate, including the inverted plate cover, with aluminum foil. Place the plate on a plate shaker, secure it with a rubber band and shake at approximate 500 rpm for 2 hours at room temperature.
5. **Do not vacuum!** Add 25 μL of SA-PE to each well directly.
6. Seal the plate with a fresh plate sealer. Wrap the entire plate, including the inverted plate cover, with aluminum foil. Place the plate on a plate shaker and shake at approximate 500 rpm for 30 minutes at room temperature.
7. **Do not invert the plate!** Place the plate on the vacuum manifold and apply vacuum as before in Step 1. Add 200 μL of 1X Wash Buffer to each well. Remove Wash Buffer by vacuum filtration. Blot excess Wash Buffer from the bottom of the plate with an absorbent pad or paper towels. Repeat this washing step once more.
8. Add 150 μL of 1X Wash Buffer to each well. Resuspend the beads on a plate shaker for 1 minute.
9. Read samples on a flow cytometer, preferably within the same day of the assay (Note: Prolonged sample storage can lead to reduced signal).

If the flow cytometer is equipped with an autosampler, read the plate directly using the autosampler. **Please be sure to program the autosampler to resuspend beads in the well immediately before taking samples. The probe height may need to be adjusted when using an autosampler.**

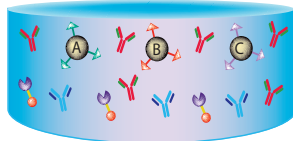
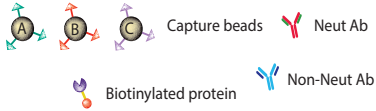
If an autosampler is not available, the samples can be transferred from the filter plate to micro FACS (or FACS) tubes and read manually.

LEGENDplex™ SARS-CoV-2 Variants Neut. Ab Panel (6-plex)

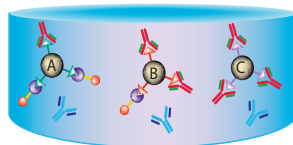
Assay Procedure Summary for Filter Plate

Add 100 μ L 1X Wash Buffer to filter plate wells

Vacuum to remove excess buffer



Incubate 2 hours, RT, shaking



Without washing, add 25 μ L SA-PE
Incubate 30 min, RT, shaking

Wash 2 times using vacuum filtration unit
Add 150 μ L of 1x Wash Buffer
Read on a flow cytometer

(Refer to Assay Procedure)

Add to the plate:
25 μ L Assay Buffer to all wells
25 μ L diluted standard to standard wells
25 μ L diluted sample to sample wells
25 μ L premixed beads to all wells
25 μ L detection to all wells

LEGENDplex™ SARS-CoV-2 Variants Neut. Ab Panel (6-plex)

Performing the Assay Using a V-bottom Plate

- Allow all reagents to warm to room temperature (20-25°C) before use.
- Keep the plate upright during the entire assay procedure, including the washing steps, to avoid losing beads.
- The plate should be placed in the dark or wrapped with aluminum foil for all incubation steps.
- Standards and samples should be run in duplicate and arranged on the plate in a vertical configuration convenient for data acquisition and analysis (as shown in attached PLATE MAP, page 27). Be sure to load standards in the first two columns. If an automation device is used for reading, the orientation and reading sequence should be carefully planned.

1. **For measuring serum or plasma samples**, load the plate as shown in the table below (in the order from left to right):

	Assay Buffer	Standard	Sample*
Standard Wells	25 µL	25 µL	---
Sample Wells	25 µL	---	25 µL

*See **Sample Dilution on page 10**

2. Vortex beads (1X) for 30 seconds. Add 25 µL of beads to each well. The total volume should be 75 µL in each well after beads addition. (Note: During beads addition, shake mixed beads bottle intermittently to avoid bead settling).
3. Add 25 µL of Detection to each well.
4. Seal the plate with a plate sealer. Cover the entire plate with aluminum foil to protect the plate from light. Shake at 800 rpm on a plate shaker for 2 hours at room temperature (**Depending on the shaker, the speed may need to be adjusted. The optimal speed is one that is high enough to keep beads in suspension during incubation, but not too high that it may cause sample to spill from the wells. To ensure this, observe the plate at the end of 2 hour incubation, if beads are settled or form a patch in the bottom well which may indicate the insufficient shaking speed**).
5. **Do not wash the plate!** Add 25 µL of SA-PE to each well directly.
6. Seal the plate with a new plate sealer. Wrap the entire plate with aluminum foil and shake the plate on a plate shaker at approximate 800 rpm for 30 minutes at room temperature.

LEGENDplex™ SARS-CoV-2 Variants Neut. Ab Panel (6-plex)

7. Centrifuge the plate at 1050 rpm (~250 g) for 5 minutes, using a swinging bucket rotor (G.H 3.8) with microplate adaptor (Please refer to **Materials to be Provided by the End-User, page 6**). Do not use excessive centrifugation speed as it may make it harder to resuspend beads in later steps.
Make sure the timer of the centrifuge works properly and standby to make sure the centrifuge reaches preset speed.

8. Immediately after centrifugation, dump the supernatant into a biohazard waste container by quickly inverting and flicking the plate **in one continuous and forceful motion**. The beads pellet may or may not be visible after dumping the supernatant. Loss of beads should not be a concern as the beads will stay in the tip of the well nicely. Blot the plate on a stack of clean paper towel and drain the remaining liquid from the well as much as possible. Be careful not to disturb the bead pellet.

Alternatively, removal of the supernatant may be completed using a multichannel pipette set at 100 µL. Try to remove as much liquid as possible without removing any beads. Be sure to change pipette tips between each row or column.

9. Wash the plate by dispensing 200 µL of 1X Wash Buffer into each well and incubate for one minute. Repeat step 7 and 8 above. A second wash is optional, but may help reduce background.
10. Add 150 µL of 1X Wash Buffer to each well. Resuspend the beads by pipetting.

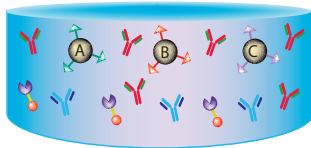
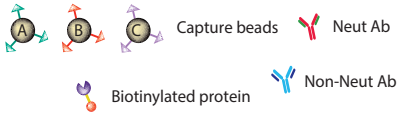
11. Read samples on a flow cytometer, preferably within the same day of the assay (Note: Prolonged sample storage can lead to reduced signal).

If the flow cytometer is equipped with an autosampler, the samples can be read directly. **Please be sure to program the autosampler to resuspend beads in the well immediately before taking samples. The probe height may need to be adjusted when using an autosampler.**

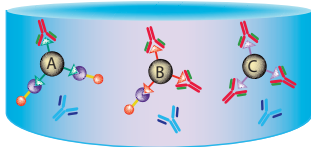
If an autosampler is not available, the samples can be transferred from the plate to micro FACS (or FACS) tubes and read manually.

LEGENDplex™ SARS-CoV-2 Variants Neut. Ab Panel (6-plex)

Assay Procedure Summary for V-bottom Plate



Incubate 2 hours, RT, shaking



Without washing, add 25 μ L SA-PE
Incubate 30 min, RT, shaking

Spin down beads, remove supernatant
Wash 1 time
Add 150 μ L of 1x Wash Buffer
Read on a flow cytometer

(Refer to Assay Procedure)

- Add to the plate:
 - 25 μ L Assay Buffer to all wells
 - 25 μ L diluted standard to standard wells
 - 25 μ L diluted sample to sample wells
 - 25 μ L premixed beads to all wells
 - 25 μ L detection to all wells

Chapter 4: FLOW CYTOMETER SETUP

In order to generate reliable data, the flow cytometer must be set up properly before data acquisition.

The setup instructions have been removed from this manual and uploaded onto our website to save paper.

To access the setup instructions, please visit: www.biolegend.com/legendplex and click on the **Instrument Setup** tab.

Chapter 5: DATA ACQUISITION AND ANALYSIS

Data Acquisition

1. Before reading samples, make sure that the flow cytometer is set up properly.
2. Create a new template or open an existing template (for details on how to create a cytometer-specific template, please refer to the Flow Cytometer Setup Guide).
3. Vortex each sample for 5 seconds before analysis.
4. Set the flow rate to low. Set the number of beads to be acquired to about 300 per analyte (e.g., acquire 1,200 beads for a 4-plex assay or 3,000 beads for a 10-plex assay). Do not set to acquire total events as samples may contain large amounts of debris. Instead, create a large gate to include both Beads A and Beads B (gate A+B) and set to acquire the number of events in gate A + B. This will exclude majority of the debris.

Note: Do not acquire too few or too many beads. Too few beads acquired may result in high CVs and too many beads acquired may result in slow data analysis later.

5. Read samples.

When reading samples, set the flow cytometer to setup mode first and wait until bead population is stabilized before recording or switching to acquisition mode.

To simplify data analysis using the LEGENDplex™ Data Analysis Software, read samples in the same order as shown on the PLATE MAP attached at the end of the manual. For an in-plate assay, read column by column (A1, B1, C1...A2, B2, C2...).

LEGENDplex™ SARS-CoV-2 Variants Neut. Ab Panel (6-plex)

When naming data files, try to use simple names with a consecutive numbering for easy data analysis (e.g. for standards, C0.001, C0.002, C1.003, C1.004, C2.005, C2.006, C3.007, C3.008, ... C7.015, C7.016; for samples, S1.017, S1.018, S2.019, S2.020, S3.021, S3.022...).

Store all FCS files in the same folder for each assay. If running multiple assays, create a separate folder for each assay.

6. Proceed to data analysis using LEGENDplex™ Data Analysis Software when data acquisition is completed.

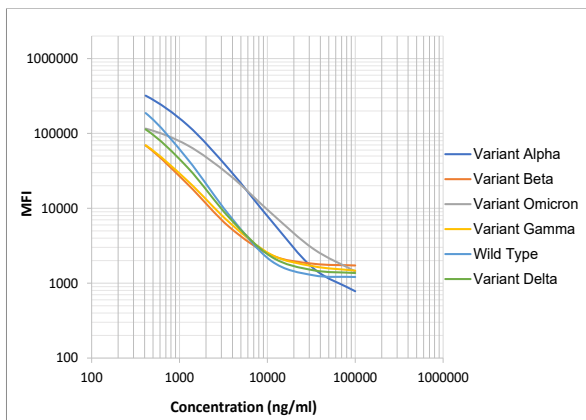
Data Analysis

- The FCS file generated on a flow cytometer should be analyzed using BioLegend's LEGENDplex™ Data Analysis Software. The LEGENDplex™ Data Analysis Software can be downloaded for free here: www.biolegend.com/legendplex.

Chapter 6: ASSAY CHARACTERIZATION

Representative Standard Curve

This standard curve was generated using the LEGENDplex™ SARS-CoV-2 Variants Neut. Ab Panel (6-plex) for demonstration purposes only. A standard curve must be run with each assay.



Assay Sensitivity

The assay sensitivity or Limit of Detection (LOD) is the theoretical limit of detection calculated using the LEGENDplex™ Data Analysis Software by applying a 5-parameter curve fitting algorithm. The formula for assay sensitivity presented below is $(LOD + 2STDEV)$.

Analyte	Sensitivity (ng/mL) (N = 22)
Variant Alpha	70.5
Variant Beta	64.3
Variant Omicron	200.9
Variant Gamma	39.5
Wild Type	34.2
Variant Delta	68.8

LEGENDplex™ SARS-CoV-2 Variants Neut. Ab Panel (6-plex)

Cross-Reactivity

The following human antibodies were tested at 10 µg/mL using LEGENDplex™ SARS-CoV-2 Variants Neut. Ab Panel (6-plex). No or negligible cross-reactivity was observed for non-neutralizing antibody.

Anti Human TGF-β1	Anti Human CD366	Anti Human IL-18
Anti Human IFN-β	Anti Human IL-6	Anti Human APRIL
Anti Human CD137	Anti Human IL-7	Anti Human CXCL10
Anti Human CD152	Anti Human IL-15	Anti Human G-CSF

Accuracy (Spike Recovery)

Serum and plasma samples were first diluted 50-fold with Assay Buffer and spiked with the standard at three different levels within the assay range.

The spiked samples were then assayed, and the measured concentrations were compared with the expected values.

Analyte	% Spike recovery	
	Serum (N = 8)	Plasma (N = 24)
Variant Alpha	109%	106%
Variant Beta	118%	114%
Variant Omicron	113%	112%
Variant Gamma	113%	110%
Wild Type	109%	108%
Variant Delta	112%	110%

Linearity of Dilution

Serum and plasma samples were initially diluted 50-fold in Assay Buffer and then spiked with target proteins with known concentrations in the assay range. The spiked samples were then serially diluted 2, 4, and 8-fold with Assay Buffer and assayed.

The measured concentrations of serially diluted samples were then compared with the concentration of the lowest dilution based on serial dilution factor used.

LEGENDplex™ SARS-CoV-2 Variants Neut. Ab Panel (6-plex)

Analyte	% Linearity	
	Serum (N = 8)	Plasma (N = 24)
Variant Alpha	96%	94%
Variant Beta	83%	84%
Variant Omicron	95%	97%
Variant Gamma	88%	85%
Wild Type	80%	80%
Variant Delta	85%	84%

Intra-Assay Precision

Two samples with different concentrations of neutralization antibody were analyzed in one assay with 16 replicates per sample. The intra-assay precision is shown below.

Analyte	Sample	Mean (ng/mL)	STDEV	%CV
Variant Alpha	Sample 1	3816.5	143.1	4%
	Sample 2	355.1	14.9	4%
Variant Beta	Sample 1	4481.1	284.2	6%
	Sample 2	447.2	16.7	4%
Variant Omicron	Sample 1	5207.3	202.4	4%
	Sample 2	945.6	25.5	3%
Variant Gamma	Sample 1	4620.3	227.0	5%
	Sample 2	455.9	14.2	3%
Wild Type	Sample 1	3827.8	163.4	4%
	Sample 2	351.0	9.8	3%
Variant Delta	Sample 1	4181.1	178.6	4%
	Sample 2	406.6	13.3	3%

Inter-Assay Precision

Two samples with different concentrations of neutralization antibody were analyzed in ten independent assays with four replicates per sample. The inter-assay precision is shown below.

LEGENDplex™ SARS-CoV-2 Variants Neut. Ab Panel (6-plex)

Analyte	Sample	Mean (ng/mL)	STDEV	%CV
Variant Alpha	Sample 1	3866.1	231.1	6%
	Sample 2	362.3	78.3	22%
Variant Beta	Sample 1	4313.7	321.4	7%
	Sample 2	444.7	92.6	21%
Variant Omicron	Sample 1	5121.5	244.7	5%
	Sample 2	909.0	186.0	20%
Variant Gamma	Sample 1	4430.3	306.5	7%
	Sample 2	446.4	90.9	20%
Wild Type	Sample 1	3732.9	231.1	6%
	Sample 2	357.8	73.6	21%
Variant Delta	Sample 1	4041.0	246.2	6%
	Sample 2	415.7	86.8	21%

Biological Samples

The values in this section are provided for reference only. The assays provided in this kit are intended for research use only.

Three sets of human serum samples from 32 donors were tested for the endogenous levels of the variants antibodies. Samples were collected before vaccination, 2 weeks after the 1st dose of vaccination and 2 weeks after the 2nd dose of vaccination in early 2021 and assayed with the LegendPlex SARS-CoV-2 Variants Neut. Ab Panel (6-plex) kit. The results (concentrations after multiplying by the dilution factor, all in µg/ml) are summarized as below.

Analyte	Vaccination	Range (µg/mL)	% Detectable	Median (µg/mL)
Variant Alpha	Before Vax	0.0-2.0	19%	0.0
	1st Dose	0.0-246.0	97%	4.7
	2nd Dose	13.9-248.6	100%	38.1
Variant Beta	Before Vax	0.0-0.0	0%	0.0
	1st Dose	0.0-100.6	91%	2.4
	2nd Dose	5.4-72.4	100%	10.9
Variant Omicron	Before Vax	ND-17.4	22%	10.4
	1st Dose	ND-15.5	53%	9.5
	2nd Dose	ND-36.8	31%	12.3

LEGENDplex™ SARS-CoV-2 Variants Neut. Ab Panel (6-plex)

Variant Gamma	Before Vax	0.0-0.0	0%	0.0
	1st Dose	0.0-91.4	63%	1.5
	2nd Dose	4.8-68.3	100%	11.4
Wild Type	Before Vax	0.0-1.9	3%	0.0
	1st Dose	0-220.1	91%	4.8
	2nd Dose	17.9-215.7	100%	41.6
Variant Delta	Before Vax	0.0-0.0	0%	0.0
	1st Dose	0.0-174.8	63%	2.4
	2nd Dose	13.0-164.0	100%	31.5

Human serum/plasma from 16 healthy human donors were tested for endogenous levels of the target antibodies. Samples were collected during the COVID pandemic between March and September 2022 and vaccination status of donors was undisclosed, might vary from zero dose to three doses. Pre-existing SARS-CoV-2 reactive antibodies have been reported at low levels in healthy donor cohorts¹, inconclusive data may reflect this phenomenon and can be verified with clinical information. Concentrations reported between the minimum detectable concentration and C1 (137 ng/mL) were considered inconclusive and excluded from % detectable. Users may modify this cutoff. The concentrations after multiplying by the dilution factor are shown below (in µg/mL).

Analyte	Range (µg/mL)	% Detectable	Median (µg/mL)
Variant Alpha	ND-249.0	69%	37.6
Variant Beta	ND-128.9	50%	15.4
Variant Omicron	ND-71.5	38%	9.4
Variant Gamma	1.8-144.1	50%	13.5
Wild Type	ND-183.8	69%	28.8
Variant Delta	ND-191.3	63%	22.4

¹K.W. Ng et al., Science 10.1126/science.abe1107 (2020)

TROUBLESHOOTING

Problem	Possible Cause	Solution
Bead population shifting upward or downward during acquisition	The strong PE signal from high concentration samples or standards may spill over to classification Channel (e.g., FL3/FL4/APC) and mess up the bead separation.	Optimize instrument settings using Kit Setup Beads, and make appropriate compensation between channels.
Filter plate will not vacuum or some wells clogged	Vacuum pressure is insufficient or vacuum manifold does not seal properly.	Increase vacuum pressure such that 0.2 mL buffer can be suctioned in 3-5 seconds. Clean the vacuum manifold and make sure no debris on the manifold. Press down the plate on the manifold to make a good seal.
	Samples have insoluble particles or sample is too viscous (e.g., serum and plasma samples)	<p>Centrifuge samples just prior to assay setup and use supernatant. If high lipid content is present, remove lipid layer after centrifugation. Sample may need dilution if too viscous.</p> <p>If some wells are still clogged during washing, try the following:</p> <ol style="list-style-type: none"> 1). Add buffer to all the wells, pipette up and down the clogged wells and vacuum again. 2). Use a piece of clean wipe, wipe the under side of the clogged wells and vacuum again. 3). Take a thin needle (e.g., insulin needle), while holding the plate upward, poke the little hole under each of the clogged wells and vacuum again. Do not poke too hard or too deep as it may damage the filter and cause leaking.
	Filter plate was used without pre-wet.	Pre-wet plate with wash buffer before running the assay.

LEGENDplex™ SARS-CoV-2 Variants Neut. Ab Panel (6-plex)

Insufficient bead count or slow reading	Beads inappropriately prepared	Sonicate bead vials and vortex just prior to addition. Agitate mixed beads intermittently in reservoir while pipetting this into the plate.
	Samples cause beads aggregation due to particulate matter or viscosity.	Centrifuge samples just prior to assay setup and use supernatant. If high lipid content is present, remove lipid layer after centrifugation. Sample may need dilution if too viscous.
	Beads were lost during washing for in-tube assay	Make sure beads are spun down by visually check the pellet (beads are in light blue or blue color). Be very careful when removing supernatant during washing.
	Probe might be partially clogged.	Sample probe may need to be cleaned, or if needed, probe should be removed and sonicated.
Plate leaked	Vacuum pressure set too high	Adjust vacuum pressure such that 0.2 mL buffer can be suctioned in 3-5 seconds. Do not exceed 10" Hg of vacuum.
	Plate set directly on table or absorbent towels during incubations or reagent additions	Set plate on plate holder or raised edge so bottom of filter is not touching any surface.
	Liquid present on the under side of the plate after vacuum	After washing, press down plate firmly on a stack of clean paper towels to dry the underside of the plate.
	Pipette touching and damaged plate filter during additions.	Pipette to the side of wells.
High Background	Background wells were contaminated	Avoid cross-well contamination by changing tips between pipetting when performing the assay using a multichannel pipette.
	Insufficient washes	The background may be due to non-specific binding of SA-PE. Increase number of washes.
Debris (FSC/SSC) during sample acquisition	Debris or platelet may exist in sample solution.	Centrifuge samples before analyzing samples. Remove platelet as much as possible.

LEGENDplex™ SARS-CoV-2 Variants Neut. Ab Panel (6-plex)

Variation between duplicate samples	Beads aggregation	Sonicate and vortex the Beads prior to use.
	Multichannel pipette may not be calibrated or inconsistent pipetting	Calibrate Pipette. Ensure good pipetting practice. Prime pipette before use may help.
	Plate washing was not uniform	Make sure all reagents are vacuumed out completely in all wash steps.
	Samples may contain particulate matters.	Centrifuge samples just prior to assay setup and use supernatant. If high lipid content is present, remove lipid layer after centrifugation. Sample may need dilution if too viscous.
Low or poor standard curve signal	The standard was incorrectly reconstituted, stored or diluted	Follow the protocol to reconstitute, store and dilute standard. Double check your calculation.
	Wrong or short incubation time	Ensure the time of all incubations was appropriate.
Signals too high, standard curves saturated	PMT value for FL2/PE set too high	Make sure the PMT setting for the reporter channel is appropriate
	Plate incubation time was too long	Use shorter incubation time.
Sample readings are out of range	Samples contain no or below detectable levels of analyte	Make sure the experiment to generate the samples worked. Use proper positive controls.
	Samples concentrations higher than highest standard point.	Dilute samples and analyze again.
	Standard curve was saturated at higher end of curve.	Make sure the PMT setting for the reporter channel is appropriate. Use shorter incubation time if incubation time was too long
Missed beads populations during reading, or distribution is unequal	Sample may cause some beads to aggregate.	Centrifuge samples just prior to assay setup and use supernatant. If high lipid content is present, remove lipid layer after centrifugation. Sample may need dilution if too viscous.
	Beads populations are not mixed properly	Make sure all bead populations are mixed. and in similar numbers.

PLATE MAP (for in-plate assay)

	1	2	3	4	5	6	7	8	9	10	11	12
A	C0	C4	Sample1	Sample5	Sample 9	Sample 13	Sample 17	Sample 21	Sample 25	Sample 29	Sample 33	Sample 37
B	C0	C4	Sample1	Sample5	Sample 9	Sample 13	Sample 17	Sample 21	Sample 25	Sample 29	Sample 33	Sample 37
C	C1	C5	Sample2	Sample6	Sample 10	Sample 14	Sample 18	Sample 22	Sample 26	Sample 30	Sample 34	Sample 38
D	C1	C5	Sample2	Sample6	Sample 10	Sample 14	Sample 18	Sample 22	Sample 26	Sample 30	Sample 34	Sample 38
E	C2	C6	Sample3	Sample7	Sample 11	Sample 15	Sample 19	Sample 23	Sample 27	Sample 31	Sample 35	Sample 39
F	C2	C6	Sample3	Sample7	Sample 11	Sample 15	Sample 19	Sample 23	Sample 27	Sample 31	Sample 35	Sample 39
G	C3	C7	Sample4	Sample8	Sample 12	Sample 16	Sample 20	Sample 24	Sample 28	Sample 32	Sample 36	Sample 40
H	C3	C7	Sample4	Sample8	Sample 12	Sample 16	Sample 20	Sample 24	Sample 28	Sample 32	Sample 36	Sample 40



LEGENDplex™ Kits are manufactured by **BioLegend**

8999 BioLegend Way

San Diego, CA 92121

Tel: 1.858.768.5800

Tel: US & Canada Toll-Free: 1.877.Bio-Legend (1.877.246.5343)

Fax: 1.877.455.9587

Email: info@biolegend.com

biolegend.com

For a complete list of world-wide BioLegend offices and distributors,
please visit our website at: biolegend.com