



Enabling Legendary Discovery™

# LEGENDplex™

## Multi-Analyte Flow Assay Kit

**Cat. No. 741067, Mouse Proinflammatory Chemokine Panel 2  
(8-plex) with Filter Plate**

Cat. No. 741068, Mouse Proinflammatory Chemokine Panel 2  
(8-plex) with V-bottom Plate

**Cat. No. 741084, Mouse Proinflammatory Chemokine Panel 2  
(6-plex) with Filter Plate**

Cat. No. 741085, Mouse Proinflammatory Chemokine Panel 2  
(6-plex) with V-bottom Plate

**Cat. No. 741086, Mouse Proinflammatory Chemokine Panel 2  
(2-plex) with Filter Plate**

Cat. No. 741087, Mouse Proinflammatory Chemokine Panel 2  
(2-plex) with V-bottom Plate

**Please read the entire manual before running the assay.**

BioLegend.com

***It is highly recommended that this manual be read in its entirety before using this product. Do not use this kit beyond the expiration date.***

*For Research Purposes Only. Not for use in diagnostic or therapeutic procedures. Purchase does not include or carry the right to resell or transfer this product either as a stand-alone product or as a component of another product. Any use of this product other than the permitted use without the express written authorization of BioLegend is strictly prohibited.*

<b>Table of Contents</b>	<b>Page</b>
<b>Chapter 1: KIT DESCRIPTION.....</b>	<b>3</b>
Introduction.....	3
Principle of the Assay.....	4
Beads Usage.....	4
Storage Information.....	5
Materials Supplied.....	6
Materials to be Provided by the End-User.....	8
Precautions.....	9
<b>Chapter 2: ASSAY PREPARATION.....</b>	<b>10</b>
Sample Collection and Handling.....	10
Reagent Preparation.....	10
Standard Preparation .....	11
Sample Dilution.....	12
<b>Chapter 3: ASSAY PROCEDURE.....</b>	<b>13</b>
Performing the Assay Using a Filter Plate.....	13
Performing the Assay Using a V-bottom Plate.....	16
<b>Chapter 4: FLOW CYTOMETER SETUP.....</b>	<b>19</b>
<b>Chapter 5: DATA ACQUISITION AND ANALYSIS.....</b>	<b>19</b>
Data Acquisition.....	19
Data Analysis.....	20
<b>Chapter 6: ASSAY CHARACTERIZATION.....</b>	<b>21</b>
Representative Standard Curve.....	21
Assay Sensitivity.....	21
Cross-Reactivity.....	22
Accuracy.....	22
Linearity of Dilution.....	23

LEGENDplex™ Mouse Proinflammatory Chemokine Panel 2

Intra-Assay Precision..... 24

Inter-Assay Precision..... 24

Biological Samples..... 25

**TROUBLESHOOTING..... 29**

**PLATE MAP..... 33**

## Chapter 1: KIT DESCRIPTION

### Introduction

Chemotactic cytokines or chemokines play pivotal roles in various processes such as immune surveillance, organ development, angiogenesis, and immune responses. Expression profiling of chemokines, especially those involved in inflammation and immune disorders, is important in achieving a deeper understanding of disease states.

The Mouse Proinflammatory Chemokine Panel 2 is a multiplex bead-based assay panel, using fluorescence-encoded beads suitable for use on various flow cytometers. This panel allows simultaneous quantification of 8 mouse chemokines, including Eotaxin-2 (CCL24), MCP-2 (CCL8), ITAC (CXCL11), Fractalkine (CX3CL1), MCP-3 (CCL7), Lymphotactin (XCL1), MIP-2 (CXCL2) and MIP-1 $\gamma$  (CCL9). This assay panel provides higher detection sensitivities and broader dynamic ranges than traditional ELISA methods. The panel has been validated for use on serum, EDTA plasma, Citrate plasma and cell culture supernatant samples. Use caution when using heparin plasma samples due to compromised accuracy in these samples.

The LEGENDplex™ Mouse Proinflammatory Chemokine Panel 2 (8-plex) is designed to allow flexible customization within the panel. It can also be divided into subpanels. The table below shows the panel configuration and sample dilution requirement.

Cat #	Plex Size	Targets	Sample Type	Dilution Factor
741067, 741068	8-plex	CCL24, CCL8, CXCL11, CX3CL1, CCL7, XCL1, CXCL2, CCL9	Tissue Culture	Varies
741084, 741085	6-plex	CCL24, CXCL11, CX3CL1, CCL7, XCL1, CXCL2	Tissue Culture	Varies
			Serum/Plasma	2x
741086, 741087	2-plex	CCL8, CCL9	Tissue Culture	Varies
			Serum Plasma	200x

Please visit [www.biolegend.com/legendplex](http://www.biolegend.com/legendplex) for more information on how to mix and match within the panel.

# LEGENDplex™ Mouse Proinflammatory Chemokine Panel 2

## Principle of the Assay

BioLegend's LEGENDplex™ assays are bead-based immunoassays using the same basic principle as sandwich immunoassays.

Beads are differentiated by size and internal fluorescence intensities. Each bead set is conjugated with a specific antibody on its surface and serves as the capture beads for that particular analyte. When a selected panel of capture beads is mixed and incubated with a sample containing target analytes specific to the capture antibodies, each analyte will bind to its specific capture beads. After washing, a biotinylated detection antibody cocktail is added, and each detection antibody in the cocktail will bind to its specific analyte bound on the capture beads, thus forming capture bead-analyte-detection antibody sandwiches. Streptavidin-phycoerythrin (SA-PE) is subsequently added, which will bind to the biotinylated detection antibodies, providing fluorescent signal intensities in proportion to the amount of bound analytes.

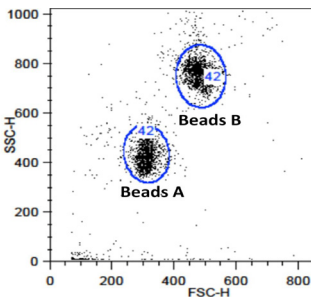
Since the beads are differentiated by size and internal fluorescence intensity on a flow cytometer, analyte-specific populations can be segregated and PE fluorescent signal quantified. The concentration of a particular analyte is determined using a standard curve generated in the same assay.

## Beads Usage

The Mouse Proinflammatory Chemokine Panel 2 uses two sets of beads. Each set has a unique size that can be identified based on their forward scatter (FSC) and side scatter (SSC) profiles (Beads A and Beads B, Figure 1). Each bead set can be further resolved based on their internal fluorescence intensities. The internal dye can be detected using FL3, FL4, or APC channel, depending on the type of flow cytometer used. The smaller Beads A consists of 4 bead populations and the larger Beads B consists of 4 bead populations (Figure 2-3).

Using a total of 8 bead populations distinguished by size and internal fluorescent dye, the Mouse Proinflammatory Chemokine Panel 2 allows simultaneous detection of 8 chemokines in a single sample. Each analyte is associated with a particular bead set as indicated (Figures 2-3 and Table 1).

**Figure 1. Beads Differentiated by Size**

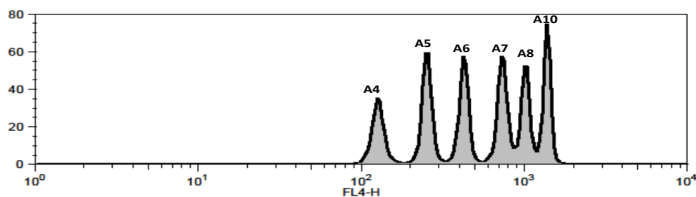


Beads A = smaller beads

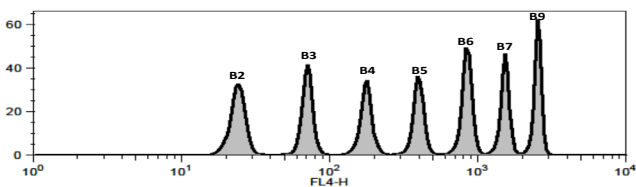
Beads B = larger beads

# LEGENDplex™ Mouse Proinflammatory Chemokine Panel 2

**Figure 2. Beads A Classification by FL4**



**Figure 3. Beads B Classification by FL4**



For Beads usage in the panel, please refer to Table 1 below:

**Table 1. Panel Targets, Bead ID and Top Standard Concentrations:**

Target	Bead ID	(8-Plex)	(6-Plex)	(2-Plex)	Top Standard Concentration
		No.741067, 741068	No.741084, 741085	No.741086, 741087	
Eotaxin-2	A4	√	√		Note: The top standard concentrations of analytes in this panel were set at various concentrations, but may be subject to change from lot to lot (please visit <a href="http://biologend.com/en-us/legendplex">biologend.com/en-us/legendplex</a> to download a lot-specific certificate of analysis).
MCP-2	A5	√		√	
ITAC	A6	√	√		
Fractalkine	A10	√	√		
MCP-3	B2	√	√		
Lymphotactin	B4	√	√		
MIP-2	B6	√	√		
MIP-1γ	B9	√		√	

\*Bead ID is used to associate a bead population to a particular analyte when using the LEGENDplex™ data analysis software program. For further information regarding the use of the program please visit [biologend.com/en-us/legendplex](http://biologend.com/en-us/legendplex)

## **Storage Information**

Recommended storage for all original kit components is between 2°C and 8°C. DO NOT FREEZE Beads, Detection Antibodies or SA-PE.

## LEGENDplex™ Mouse Proinflammatory Chemokine Panel 2

- Once the standards have been reconstituted, immediately transfer contents into polypropylene vials. DO NOT STORE RECONSTITUTED STANDARDS IN GLASS VIALS.
- Upon reconstitution, leftover standard and Matrix B should be stored at  $\leq -70^{\circ}\text{C}$  for use within one month. Avoid multiple (>2) freeze-thaw cycles. Discard any leftover diluted standards.

### Materials Supplied

The LEGENDplex™ kit contains reagents for 100 tests, listed in the table below. When assayed in duplicate, this is enough for an 8-point standard curve and 40 samples.

Kit Components	Quantity	Volume	Part #
Setup Beads 1: FITC Beads	1 vial	1 mL	77840
Setup Beads 2: PE Beads	1 vial	1 mL	77842
Setup Beads 3: Raw Beads	1 vial	2 mL	77844
<b>Capture Beads*</b>	<b>varies</b>	<b>varies</b>	<b>varies</b>
<b>Mouse Proinflammatory Chemokine Panel 2 Detection Antibodies*</b>	<b>1 bottle</b>	<b>3.5 mL</b>	<b>varies</b>
<b>Mouse Proinflammatory Chemokine Panel 2 Standard Cocktail, Lyophilized*</b>	<b>1 vial</b>	<b>lyophilized</b>	<b>varies</b>
LEGENDplex™ SA-PE	1 bottle	3.5 mL	77743
LEGENDplex™ Matrix B, Lyophilized	1 vial	lyophilized	77549
<b>LEGENDplex™ Assay Buffer*</b>	<b>varies</b>	<b>25 mL</b>	<b>77562</b>
LEGENDplex™ Wash Buffer, 20X	1 bottle	25 mL	77564
Filter plate** or V-bottom plate***	1 plate		76187 or 76883
Plate Sealers	4 sheets		78101

\*Full Panel and subpanel contents may differ as listed in the following tables

\*\*for kit with filter plate \*\*\* for kit with V-bottom plate. Only one plate is provided for each kit.



# LEGENDplex™ Human Proinflammatory Chemokine Panel 1

## Kit-Specific Components for 8-plex Panel:

Kit Components	Quantity	Volume	Part #
Mouse Proinflammatory Chemokine Panel 2 (8-plex) Pre-mixed Beads	1 bottle	3.5 mL	750002286
Mouse Proinflammatory Chemokine Panel 2 Detection Antibodies	1 bottle	3.5 mL	750002287
Mouse Proinflammatory Chemokine Panel 2 Standard Cocktail, Lyophilized	1 vial	lyophilized	750002288
LEGENDplex™ Assay Buffer	1 bottle	25 mL	77562

## Kit-Specific Components for 6-plex Panel:

Kit Components	Quantity	Volume	Part #
Mouse CCL24 (Eotaxin-2) Capture Bead A4, 13X	1 vial	270 µL	741071
Mouse CXCL11 (ITAC) Capture Bead A6, 13X	1 vial	270 µL	741073
Mouse CX3CL1 (Fractalkine) Capture Bead A10, 13X	1 vial	270 µL	741074
Mouse CCL7 (MCP-3) Capture Bead B2, 13X	1 vial	270 µL	741075
Mouse XCL1 (Lymphotactin) Capture Bead B4, 13X	1 vial	270 µL	741076
Mouse CXCL2 (MIP-2) Capture Bead B6, 13X	1 vial	270 µL	741077
Mouse Proinflammatory Chemokine Panel 2 Detection Antibodies	1 bottle	3.5 mL	741069
Mouse Proinflammatory Chemokine Panel 2 Standard Cocktail, Lyophilized	1 vial	lyophilized	741070
LEGENDplex™ Assay Buffer	1 bottle	25 mL	77562

## Kit-Specific Components for 2-plex Panel:

Kit Components	Quantity	Volume	Part #
Mouse CCL8 (MCP-2) Capture Bead A5, 13X	1 vial	270 µL	741072
Mouse CCL9 (MIP-1γ) Capture Bead B9, 13X	1 vial	270 µL	741079
Mouse Proinflammatory Chemokine Panel 2 Detection Antibodies	1 bottle	3.5 mL	741069

## LEGENDplex™ Mouse Proinflammatory Chemokine Panel 2

Mouse Proinflammatory Chemokine Panel 2 Standard Cocktail, Lyophilized	1 vial	lyophilized	741070
LEGENDplex™ Assay Buffer	2 bottles	25 mL	77562

### Materials to be Provided by the End-User

- A flow cytometer equipped with two lasers (e.g., a 488 nm blue laser or 532 nm green laser and a 633-635 nm red laser) capable of distinguishing 575 nm and 660 nm or a flow cytometer equipped with one laser (e.g., 488 nm blue laser) capable of distinguishing 575 nm and 670 nm.

#### Partial list of compatible flow cytometers:

Flow Cytometer	Reporter Channel	Channel Emission	Classification Channel	Channel Emission	Compensation needed?
BD FACSCalibur™ (single laser)	FL2	575 nm	FL3	670 nm	Yes
BD FACSCalibur™ (dual laser)	FL2	575 nm	FL4	660 nm	No*
BD Accuri C6™	FL2	585 nm	FL4	675 nm	No*
BD FACSCanto™ BD FACSCanto™ II	PE	575 nm	APC	660 nm	No*
BD™ LSR, LSR II BD LSRFortessa™	PE	575 nm	APC	660 nm	No*
BD FACSAria™	PE	575 nm	APC	660 nm	No*
Beckman Coulter- CytoFLEX	PE	585 nm	APC	660 nm	No*
Gallios	PE	575 nm	APC	660 nm	No*
NovoCyte	PE	572 nm	APC	660 nm	No*

\*Compensation is not required for the specified flow cytometers when set up properly.

For setting up various flow cytometers, please visit: [www.biolegend.com/legendplex](http://www.biolegend.com/legendplex) and click on the **Instrument Setup** tab.

- Multichannel pipettes capable of dispensing 5 µL to 200 µL
- Reagent reservoirs for multichannel pipette
- Polypropylene microfuge tubes (1.5 mL)
- Laboratory vortex mixer
- Sonicator bath (e.g., Branson Ultrasonic Cleaner model #B200, or equivalent)

## LEGENDplex™ Mouse Proinflammatory Chemokine Panel 2

- Aluminum foil
- Absorbent pads or paper towels
- Plate shaker (e.g., Lab-Line Instruments model #4625, or equivalent)
- Tabletop centrifuges (e.g., Eppendorf centrifuge 5415 C, or equivalent)
- 1.1 mL polypropylene micro FACS tubes, in 96-tube rack (e.g., National Scientific Supply Co, catalog # TN0946-01R, or equivalent).

### **If the assay is performed in a filter plate;**

- A vacuum filtration unit (Millipore MultiScreen® HTS Vacuum Manifold, cat# MSVMHTS00 or equivalent). Instructions on how to use the vacuum manifold can be found at the supplier's website.
- A vacuum source (mini vacuum pump or line vacuum, e.g., Millipore Vacuum Pump, catalog # WP6111560, or equivalent)
- If needed, additional Filter plate can be ordered from BioLegend (Cat# 740377 or 740378).

### **If the assay is performed in a V-bottom plate;**

- Centrifuge with a swinging bucket adaptor for microtiter plates (e.g., Beckman Coulter Allegra™ 6R Centrifuge with MICROPLUS CARRIER adaptor for GH3.8 and JS4.3 Rotors) .
- If needed, additional V-bottom plate can be ordered from BioLegend (Cat# 740379).

## **Precautions**

- All blood components and biological materials should be handled as potentially hazardous. Follow universal precautions as established by the Center for Disease Control and Prevention and by the Occupational Safety and Health Administration when handling and disposing of infectious agents.
- Sodium azide has been added to some reagents as a preservative. Although the concentrations are low, sodium azide may react with lead and copper plumbing to form highly explosive metal azides. On disposal, flush with a large volume of water to prevent azide build-up.
- Matrix B for LEGENDplex™ kits contains components of human origin and should be handled as potentially hazardous. The raw material has been screened for infectious diseases and is negative for HIV, HBV and HCV using FDA-approved test methods.
- Do not mix or substitute reagents from different kits or lots. Reagents from different manufacturers should not be used with this kit.
- Do not use this kit beyond its expiration date.
- SA-PE and Premixed Beads are light-sensitive. Minimize light exposure.

## Chapter 2: ASSAY PREPARATION

### Sample Collection and Handling

#### **Preparation of Serum Samples:**

- Allow the blood to clot for at least 30 minutes and centrifuge for 20 minutes at 1,000 x *g*.
- Remove serum and assay immediately or aliquot and store samples at  $\leq -20^{\circ}\text{C}$ . Avoid multiple (>2) freeze/thaw cycles.
- When using frozen samples, it is recommended that samples are thawed completely, mixed and centrifuged to remove particulates prior to use.

#### **Preparation of Plasma Samples:**

- Plasma collection using EDTA as an anti-coagulant is recommended. Centrifuge for 10 minutes at 1,000 x *g* within 30 minutes of blood collection.
- Remove plasma and assay immediately, or aliquot and store samples at  $\leq -20^{\circ}\text{C}$ . Avoid multiple (>2) freeze/thaw cycles.
- When using frozen samples, it is recommended that samples are thawed completely, mixed well and centrifuged to remove particulates.

#### **Preparation of Tissue Culture Supernatant:**

- Centrifuge the sample to remove debris and assay immediately. If not possible, aliquot and store samples at  $\leq -20^{\circ}\text{C}$ . Avoid multiple (>2) freeze/thaw cycles.

### Reagent Preparation

#### **Preparation of Antibody-Immobilized Beads**

- **If pre-mixed beads are provided in the kit:**

Sonicate pre-mixed Beads bottle for 1 minute in a sonicator bath and then vortex for 30 seconds prior to use. If no sonicator bath is available, increase the vortexing time to 1 minute to completely resuspend the beads.

- **If individual beads (13X) are provided in the kit:**

The individual beads (13X) should be mixed with each other and diluted to 1X final concentration with Assay Buffer prior to use. To mix the beads, follow the steps below (a 5-plex subpanel is used as an example):

## LEGENDplex™ Mouse Proinflammatory Chemokine Panel 2

1. Sonicate each bead vial for 1 minute in a sonicator bath and then vortex for 30 seconds to completely resuspend the beads.
2. Calculate the amount of mixed and diluted beads needed for the assay. Prepare extra to compensate for pipetting loss. Each reaction needs 25  $\mu\text{L}$  of mixed and diluted beads. For 50 reactions, prepare 1.5 mL of mixed beads. For 100 reactions, prepare 3 mL of mixed beads.
3. To make 1.5 ml of 5-plex 1X diluted beads, transfer 115  $\mu\text{L}$  of each of the 5 individual beads (13X) to a fresh tube (total bead volume = 575  $\mu\text{L}$ ) and add 925  $\mu\text{L}$  of Assay Buffer to make the final volume of 1.5 mL.

### Preparation of Wash Buffer

- Bring the 20X Wash Buffer to room temperature and mix to bring all salts into solution.
- Dilute 25 mL of 20X Wash Buffer with 475 mL deionized water. Store unused portions between 2°C and 8°C for up to one month.

### Preparation of Matrix B (for Serum or Plasma Samples Only)

- Add 5.0 mL LEGENDplex™ Assay Buffer to the bottle containing lyophilized Matrix B. Allow at least 15 minutes for complete reconstitution. Vortex to mix well. Leftover reconstituted Matrix B should be stored at  $\leq -70^\circ\text{C}$  for up to one month.

### Standard Preparation

1. Prior to use, reconstitute the lyophilized Mouse Proinflammatory Chemokine Panel 2 Standard Cocktail with 250  $\mu\text{L}$  Assay Buffer.
2. Mix and allow the vial to sit at room temperature for 10 minutes, and then transfer the standard to an appropriately labeled polypropylene microfuge tube. This will be used as the top standard C7.

**Note: The top standard concentrations of analytes in this panel were set at various concentrations, but may be subject to change from lot to lot (please visit [biolegend.com/en-us/legendplex](http://biolegend.com/en-us/legendplex) to download a lot-specific certificate of analysis).**

3. Label 6 polypropylene microfuge tubes as C6, C5, C4, C3, C2 and C1, respectively.
4. Add 70  $\mu\text{L}$  of Assay Buffer to each of the six tubes. Prepare 1:3 dilution of the top standard by transferring 35  $\mu\text{L}$  of the top standard C7 to the C6 tube and mix well. This will be the C6 standard.
5. In the same manner, perform serial 1:3 dilutions to obtain C5, C4, C3,

## LEGENDplex™ Mouse Proinflammatory Chemokine Panel 2

C2 and C1 standards (see the table below using 10ng/mL of top standard concentration as an example). Assay Buffer will be used as the 0 pg/mL standard (C0).

Tube/Standard ID	Serial Dilution	Assay Buffer to add (µL)	Standard to add	Final Conc. (pg/mL)
C7	--	--	--	10,000
C6	1:3	70	35 µL of C7	3,333
C5	1:9	70	35 µL of C6	1111
C4	1:27	70	35 µL of C5	370
C3	1:81	70	35 µL of C4	123.5
C2	1:243	70	35 µL of C3	41.2
C1	1:729	70	35 µL of C2	13.7
C0	--	70	--	0

### Sample Dilution

- For measuring serum or plasma samples using the 6-plex kit, the samples need to be diluted 2-fold with Assay Buffer before being tested (e.g. dilute 50 µL of sample with 50 µL of Assay Buffer). If further sample dilution is needed, the samples should be diluted with Matrix B provided in the kit.
- For measuring serum or plasma samples using the 2-plex kit, a 200-fold dilution using Assay Buffer is recommended due to the high concentration. If further sample dilution is needed, the samples should be diluted with Assay Buffer provided in the kit.

**Adding serum or plasma samples without dilution will result in low assay accuracy and possibly, clogging of the filter plate.**

- For cell culture supernatant samples, the levels of analyte can vary greatly from sample to sample. While the sample can be tested without dilutions, a preliminary experiment may be required to determine the appropriate dilution factor for samples.

If sample dilution is desired, dilution should be done with corresponding fresh cell culture medium or Assay Buffer to ensure accurate measurement.

## Chapter 3: ASSAY PROCEDURE

The LEGENDplex™ assay can be performed in a filter plate or in a V-bottom plate.

- The in-filter plate assay procedure requires a vacuum filtration unit for washing (see **Materials to be Provided by the End-User, page 8**).
- If the in-filter plate assay procedure is not possible or if you prefer, the assay can be performed in a V-bottom plate.

### Performing the Assay Using a Filter Plate

- Allow all reagents to warm to room temperature (20-25°C) before use.
  - Set the filter plate on an inverted plate cover at all times during assay setup and incubation steps, so that the bottom of the plate does not touch any surface. Touching a surface may cause leakage.
  - Keep the plate upright during the entire assay procedure, including the washing steps, to avoid losing beads.
  - The plate should be placed in the dark or wrapped with aluminum foil for all incubation steps.
  - **Standards and samples should be run in duplicate and arranged on the plate in a vertical configuration convenient for data acquisition and analysis (as shown in attached PLATE MAP, page 33). Be sure to load standards in the first two columns. If an automation device is used for reading, the orientation and reading sequence should be carefully planned.**
1. Pre-wet the plate by adding 100 µL of 1X Wash Buffer to each well and let it sit for 1 minute at room temperature. To remove the excess volume, place the plate on the vacuum manifold and apply vacuum. Do not exceed 10" Hg of vacuum. Vacuum until wells are drained (5-10 seconds). Blot excess Wash Buffer from the bottom of the plate by pressing the plate on a stack of clean paper towels. Place the plate on top of the inverted plate cover.

**For measuring cell culture supernatant samples**, load the plate as shown in the table below (in the order from left to right):

	Assay Buffer	Matrix B	Standard	Sample*
Standard Wells	25 µL	---	25 µL	---
Sample wells	25 µL	---	---	25 µL

**For measuring serum/plasma samples using the 6-plex kit**, load the plate as shown in the table below (in the order from left to right):

## LEGENDplex™ Mouse Proinflammatory Chemokine Panel 2

	Assay Buffer	Matrix B	Standard	Sample*
Standard Wells	---	25 µL	25 µL	---
Sample wells	25 µL	---	---	25 µL

**For measuring serum/plasma samples using the 2-plex kit**, load the plate as shown in the table below (in the order from left to right):

	Assay Buffer	Matrix B	Standard	Sample*
Standard Wells	25 µL	---	25 µL	---
Sample wells	25 µL	---	---	25 µL

\*See **Sample Dilution**

2. Vortex mixed beads bottle for 30 seconds. Add 25 µL of mixed beads to each well. The volume should be 75 µL in each well after beads addition. (Note: During addition of the beads, shake mixed beads bottle intermittently to avoid bead settling).
3. Seal the plate with a plate sealer. **To avoid plate leaking, do not apply positive pressure to the sealer when sealing the plate.** Wrap the entire plate, including the inverted plate cover, with aluminum foil. Place the plate on a plate shaker, secure it with a rubber band and shake at approximate 500 rpm for 2 hours at room temperature.
4. **Do not invert the plate!** Place the plate on the vacuum manifold and apply vacuum as before in Step 1. Add 200 µL of 1X Wash Buffer to each well. Remove Wash Buffer by vacuum filtration. Blot excess Wash Buffer from the bottom of the plate with an absorbent pad or paper towels. Repeat this washing step once more.
5. Add 25 µL of Detection Antibodies to each well.
6. Seal the plate with a fresh plate sealer. Wrap the entire plate, including the inverted plate cover, with aluminum foil. Place the plate on a plate shaker and shake at approximately 500 rpm for 1 hour at room temperature.
7. **Do not vacuum!** Add 25 µL of SA-PE to each well directly.
8. Seal the plate with a fresh plate sealer. Wrap the entire plate, including the inverted plate cover, with aluminum foil. Place the plate on a plate shaker and shake at approximate 500 rpm for 30 minutes at room temperature.
9. Repeat step 4 above.
10. Add 150 µL of 1X Wash Buffer to each well. Resuspend the beads on a plate shaker for 1 minute.



## LEGENDplex™ Mouse Proinflammatory Chemokine Panel 2

11. Read samples on a flow cytometer, preferably within the same day of the assay (Note: Prolonged sample storage can lead to reduced signal).

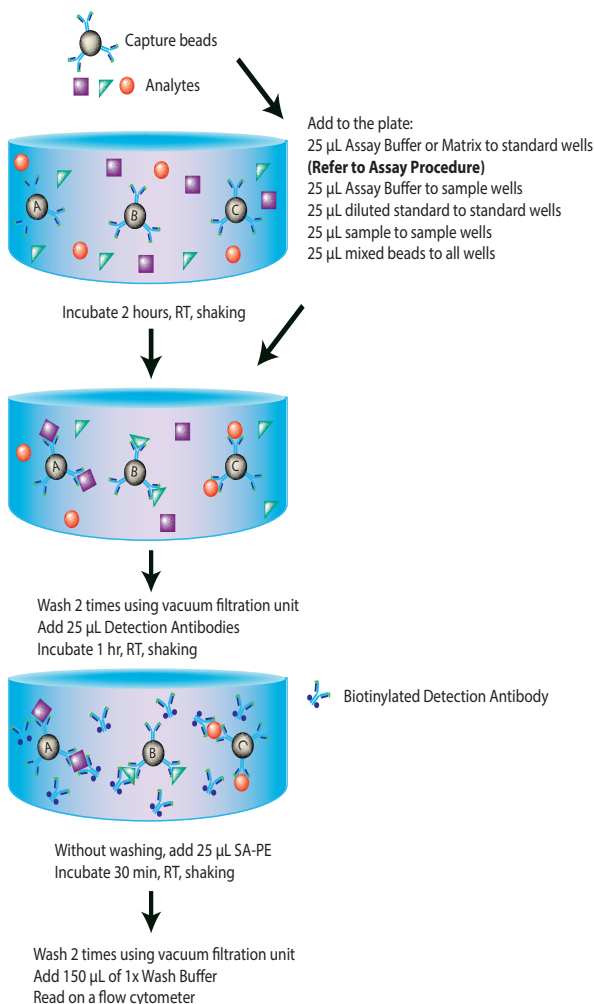
If the flow cytometer is equipped with an autosampler, read the plate directly using the autosampler. **Please be sure to program the autosampler to resuspend beads in the well immediately before taking samples. The probe height may need to be adjusted when using an autosampler.**

If an autosampler is not available, the samples can be transferred from the filter plate to micro FACS (or FACS) tubes and read manually.

### Assay Procedure Summary for Filter Plate

Add 100  $\mu$ L 1X Wash Buffer to filter plate wells

Vacuum to remove excess buffer



**Performing the Assay Using a V-bottom Plate**

- Allow all reagents to warm to room temperature (20-25°C) before use.
- Keep the plate upright during the entire assay procedure, including the washing steps, to avoid losing beads.
- The plate should be placed in the dark or wrapped with aluminum foil for all incubation steps.
- Standards and samples should be run in duplicate and arranged on the plate in a vertical configuration convenient for data acquisition and analysis (as shown in attached PLATE MAP, page 33). Be sure to load standards in the first two columns. If an automation device is used for reading, the orientation and reading sequence should be carefully planned.

1. **For measuring cell culture supernatant samples**, load the plate as shown in the table below (in the order from left to right):

	Assay Buffer	Matrix B	Standard	Sample*
Standard Wells	25 µL	---	25 µL	---
Sample wells	25 µL	---	---	25 µL

**For measuring serum/plasma samples using the 6-plex kit**, load the plate as shown in the table below (in the order from left to right):

	Assay Buffer	Matrix B	Standard	Sample*
Standard Wells	---	25 µL	25 µL	---
Sample wells	25 µL	---	---	25 µL

**For measuring serum/plasma samples using the 2-plex kit**, load the plate as shown in the table below (in the order from left to right):

	Assay Buffer	Matrix B	Standard	Sample*
Standard Wells	25 µL	---	25 µL	---
Sample wells	25 µL	---	---	25 µL

\*See **Sample Dilution**

2. Vortex mixed beads for 30 seconds. Add 25 µL of mixed beads to each well. The total volume should be 75 µL in each well after beads addition. (Note: During beads addition, shake mixed beads bottle intermittently to avoid bead settling).
3. Seal the plate with a plate sealer. Cover the entire plate with aluminum foil to protect the plate from light. Shake at 800 rpm on a plate shaker for

## LEGENDplex™ Mouse Proinflammatory Chemokine Panel 2

2 hours at room temperature (**Depending on the shaker, the speed may need to be adjusted. The optimal speed is one that is high enough to keep beads in suspension during incubation, but not too high so it causes spill from the wells**).

4. Centrifuge the plate at 1050 rpm (~250 g) for 5 minutes, using a swinging bucket rotor (G.H 3.8) with microplate adaptor (Please refer to **Materials to be Provided by the End-User, page 8**). Do not use excessive centrifugation speed as it may make it harder to resuspend beads in later steps. **Make sure the timer of the centrifuge works properly and standby to make sure the centrifuge reaches preset speed.**

5. Immediately after centrifugation, dump the supernatant into a sink by quickly inverting and flicking the plate **in one continuous and forceful motion**. Do not worry about losing beads even if the pellet is not visible. The beads will stay in the tip of the well nicely. Blot the plate on a stack of clean paper towel and drain the remaining liquid from the well as much as possible. Be careful not to disturb the bead pellet.

Alternatively, removal of the supernatant may be completed using a multichannel pipette set at 75  $\mu$ L. Try to remove as much liquid as possible without removing any beads. Be sure to change pipette tips between each row or column.

6. Wash the plate by dispensing 200  $\mu$ L of 1X Wash Buffer into each well and incubate for one minute. Repeat step 4 and 5 above. A second wash is optional, but may help reduce background.
7. Add 25  $\mu$ L of Detection Antibodies to each well.
8. Seal the plate with a new plate sealer. Cover the entire plate with aluminum foil to protect the plate from light. Shake at 800 rpm on a plate shaker for 1 hour at room temperature.
9. **Do not wash the plate!** Add 25  $\mu$ L of SA-PE to each well directly.
10. Seal the plate with a new plate sealer. Wrap the entire plate with aluminum foil and shake the plate on a plate shaker at approximate 800 rpm for 30 minutes at room temperature.
11. Repeat step 4, and 5.
12. Wash the plate by dispensing 200  $\mu$ L of 1X Wash Buffer into each well and incubate for one minute. Repeat step 4 and 5 above. This washing step is optional but helps to reduce the background.
13. Add 150  $\mu$ L of 1X Wash Buffer to each well. Resuspend the beads by pipetting.
14. Read samples on a flow cytometer, preferably within the same day of the

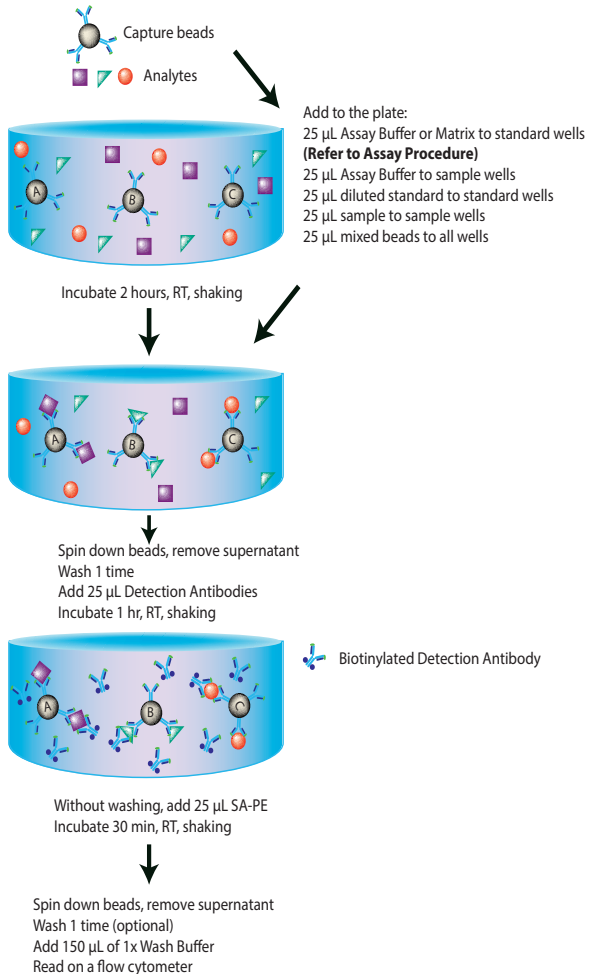
## LEGENDplex™ Mouse Proinflammatory Chemokine Panel 2

assay (Note: Prolonged sample storage can lead to reduced signal).

If the flow cytometer is equipped with an autosampler, the samples can be read directly. **Please be sure to program the autosampler to resuspend beads in the well immediately before taking samples. The probe height may need to be adjusted when using an autosampler.**

If an autosampler is not available, the samples can be transferred from the plate to micro FACS (or FACS) tubes and read manually.

### Assay Procedure Summary for V-bottom Plate



## Chapter 4: FLOW CYTOMETER SETUP

In order to generate reliable data, the flow cytometer must be set up properly before data acquisition.

The setup instructions have been removed from this manual and uploaded onto our website to save paper.

To access the setup instructions, please visit: [www.biolegend.com/legendplex](http://www.biolegend.com/legendplex) and click on the **Instrument Setup** tab.

## Chapter 5: DATA ACQUISITION AND ANALYSIS

### Data Acquisition

1. Before reading samples, make sure that the flow cytometer is set up properly.
2. Create a new template or open an existing template (for details on how to create a cytometer-specific template, please refer to the Flow Cytometer Setup Guide).
3. Vortex each sample for 5 seconds before analysis.
4. Set the flow rate to low. Set the number of beads to be acquired to about 300 per analyte (e.g., acquire 2,400 beads for a 8-plex assay or 4000 beads for a 13-plex assay). Do not set to acquire total events as samples may contain large amounts of debris. Instead, create a large gate to include both Beads A and Beads B (gate A+B) and set to acquire the number of events in gate A + B. This will exclude majority of the debris.

Note: Do not acquire too few or too many beads. Too few beads acquired may result in high CVs and too many beads acquired may result in slow data analysis later.

5. Read samples.

When reading samples, set the flow cytometer to setup mode first and wait until bead population is stabilized before recording or switching to acquisition mode.

To simplify data analysis using the LEGENDplex™ Data Analysis Software, read samples in the same order as shown on the PLATE MAP attached at the end of the manual. For an in-plate assay, read column by column (A1, B1, C1...A2, B2, C2...).

## LEGENDplex™ Mouse Proinflammatory Chemokine Panel 2

When naming data files, try to use simple names with a consecutive numbering for easy data analysis (e.g. for standards, C0.001, C0.002, C1.003, C1.004, C2.005, C2.006, C3.007, C3.008, ... C7.015, C7.016; for samples, S1.017, S1.018, S2.019, S2.020, S3.021, S3.022...)

Store all FCS files in the same folder for each assay. If running multiple assays, create a separate folder for each assay.

6. Proceed to data analysis using LEGENDplex™ Data Analysis Software when data acquisition is completed.

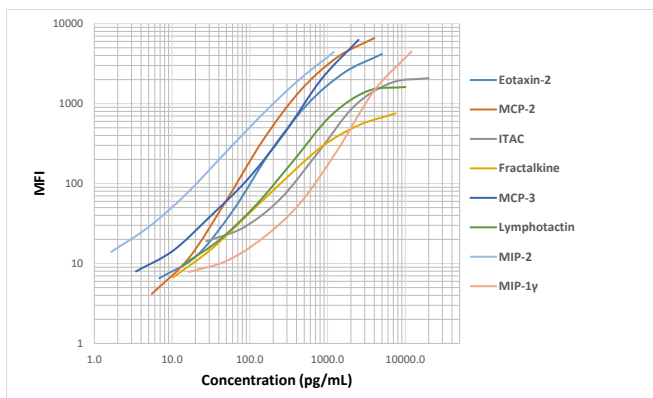
### **Data Analysis**

The assay FCS files should be analyzed using BioLegend's LEGENDplex™ data analysis software. The program is offered free of charge with the purchase of any LEGENDplex™ assay. For further information regarding access to, and use of the program please visit [biolegend.com/en-us/legendplex](http://biolegend.com/en-us/legendplex).

## Chapter 6: ASSAY CHARACTERIZATION

### Representative Standard Curve

This standard curve was generated using the LEGENDplex™ Mouse Proinflammatory Chemokine Panel 2 for demonstration purpose only. A standard curve must be run with each assay.



### Assay Sensitivity

The minimum detectable concentration (MDC) is the theoretical limit of detection calculated using the LEGENDplex™ Data Analysis Software by applying a 5-parameter curve fitting algorithm. Assay sensitivity presented here is MDC + 2 STDEV.

Analyte	MDC in Cell Culture Medium (pg/mL) (N = 17)	MDC in Serum and Plasma (pg/mL) (N = 12)
Mouse Eotaxin-2	1.7 + 1.7	1.8 + 1.2
Mouse MCP-2	1.7 + 0.6	1.9 + 1.1
Mouse ITAC	7.4 + 8.2	11.1 + 6.0
Mouse Fractalkine	3.2 + 4.9	3.7 + 5.0
Mouse MCP-3	1.2 + 1.0	1.4 + 0.9
Mouse Lymphotactin	4.8 + 5.3	2.9 + 2.2
Mouse MIP-2	0.5 + 0.6	0.5 + 0.3
Mouse MIP-1γ	6.2 + 4.3	7.4 + 3.5

# LEGENDplex™ Mouse Proinflammatory Chemokine Panel 2

## Cross-Reactivity

The following mouse recombinant proteins were tested at a concentration equal to or higher than 10 ng/mL using the LEGENDplex™ Mouse Proinflammatory Chemokine Panel 2. No or negligible cross-reactivity was found between all other analytes.

BAFF	BCMA	CCL11	CCL17	CCL2	CCL20
CCL22	CCL3	CCL4	CCL5	CD40L	CXCL1
CXCL10	CXCL12	CXCL13	CXCL5	CXCL9	EPO
G-CSF	GM-CSF	IFN- $\alpha$	IFN- $\beta$	IFN- $\gamma$	IL-10
IL-10	IL-11	IL-12p40	IL-12p70	IL-13	IL-15
IL-17A	IL-17F	IL-18	IL-1 $\alpha$	IL-1 $\beta$	IL-2
IL-22	IL-23	IL-27	IL-3	IL-33	IL-34
IL-4	IL-5	IL-6	IL-7	IL-9	LIF
M-CSF	SCF	TGF- $\beta$ 1	TNF- $\alpha$	TPO	TSLP

## Accuracy (Spike Recovery)

For spike recovery in cell culture media, target proteins with known concentrations were spiked into cell culture medium (RPMI and DMEM with 10% FBS) at three different levels within the assay range. The spiked samples were then assayed, and the measured concentrations were compared with expected values.

For spike recovery in serum and plasma, serum or plasma samples were first diluted with Assay buffer using the recommended dilution factors on Page 3. Then a sample with known high concentrations of target proteins was spiked into unknown serum or plasma samples. The spiked samples were then assayed, and the measured concentrations were compared with expected values.

Analyte	% of Recovery in Cell Culture Media (N = 2)	% of Recovery in Serum (N = 8)	% of Recovery in Plasma (N = 16)
Mouse Eotaxin-2	135%	118%	114%
Mouse MCP-2	130%	125%	124%
Mouse ITAC	63%	117%	108%
Mouse Fractalkine	91%	107%	107%



## LEGENDplex™ Mouse Proinflammatory Chemokine Panel 2

Mouse MCP-3	88%	124%	115%
Mouse Lympho- tactin	91%	108%	106%
Mouse MIP-2	91%	77%	99%
Mouse MIP-1 $\gamma$	81%	93%	95%

### Linearity of Dilution

For testing linearity of dilution in cell culture media, neat samples were spiked with target proteins at known concentrations. The spiked samples were then serially diluted 1:2, 1:4, 1:8 with tissue culture media and assayed. The measured concentrations of serially diluted samples were then compared with that of the two-fold diluted samples.

For testing linearity of dilution, serum and plasma samples were first diluted two-fold with Assay Buffer and spiked with target protein at known concentrations. The spiked samples were then serially diluted 1:2, 1:4, 1:8 with Matrix B and assayed. The measured concentrations of serially diluted samples were then compared with that of the two-fold diluted samples. For mouse MCP-2 and mouse MIP-1 $\gamma$ , serum and plasma samples were first diluted 200-fold with Assay buffer and then serially diluted 1:2, 1:4, 1:8 with Assay buffer and assayed. The measured concentrations of serially diluted samples were then compared with that of the 200-fold diluted samples, respectively.

Analyte	Linearity of Dilution (Cell Culture Media) (N = 2)	Linearity of Dilution (Serum) (N = 8)	Linearity of Dilution (Plasma) (N = 16)
Mouse Eotaxin-2	75%	87%	91%
Mouse MCP-2	94%	95%	106%
Mouse ITAC	125%	74%	82%
Mouse Fractalkine	96%	87%	82%
Mouse MCP-3	106%	94%	96%
Mouse Lympho- tactin	100%	76%	83%
Mouse MIP-2	99%	110%	98%
Mouse MIP-1 $\gamma$	108%	77%	92%

## LEGENDplex™ Mouse Proinflammatory Chemokine Panel 2

### Intra-Assay Precision

Two samples with different concentrations of target proteins were analyzed in one assay with 16 replicates for each sample. The intra-assay precision was calculated as below.

Analyte	Sample	Mean (pg/mL)	STDEV	%CV
Mouse Eo-taxin-2	Sample 1	40.8	1.8	4%
	Sample 2	122.2	4.5	4%
Mouse MCP-2	Sample 1	51.6	1.7	3%
	Sample 2	157.7	6.0	4%
Mouse ITAC	Sample 1	147.9	6.2	4%
	Sample 2	353.6	12.8	4%
Mouse Fractal-kine	Sample 1	63.7	3.5	5%
	Sample 2	191.3	15.3	8%
Mouse MCP-3	Sample 1	31.8	1.3	4%
	Sample 2	100.7	6.5	6%
Mouse Lym-photactin	Sample 1	129.4	7.1	6%
	Sample 2	348.4	21.6	6%
Mouse MIP-2	Sample 1	16.2	1.0	6%
	Sample 2	50.0	3.3	7%
Mouse MIP-1 $\gamma$	Sample 1	185.1	9.3	5%
	Sample 2	503.6	31.4	6%

### Inter-Assay Precision

Two samples with different concentrations of target proteins were analyzed in 12 independent assays with four replicates per sample. The inter-assay precision was calculated as below.

Analyte	Sample	Mean (pg/mL)	STDEV	%CV
Mouse Eo-taxin-2	Sample 1	39.2	4.7	12%
	Sample 2	116.5	9.9	8%

## LEGENDplex™ Mouse Proinflammatory Chemokine Panel 2

Mouse MCP-2	Sample 1	47.7	5.2	11%
	Sample 2	144.2	11.9	8%
Mouse ITAC	Sample 1	261.7	33.2	13%
	Sample 2	668.3	43.5	7%
Mouse Fractal-kine	Sample 1	64.1	8.9	14%
	Sample 2	180.6	19.8	11%
Mouse MCP-3	Sample 1	32.4	3.2	10%
	Sample 2	93.8	8.1	9%
Mouse Lym-photactin	Sample 1	113.4	15.0	13%
	Sample 2	295.1	33.8	11%
Mouse MIP-2	Sample 1	14.0	2.2	15%
	Sample 2	45.5	3.5	8%
Mouse MIP-1 $\gamma$	Sample 1	178.9	22.0	12%
	Sample 2	465.1	31.2	7%

### Biological Samples

#### Serum and Plasma

Pooled mouse serum samples representing 4 different strains were tested for endogenous levels of proinflammatory chemokines. The concentrations (pg/mL) measured are shown below:

Analyte	BALB/C	C57BL/6	CD-1	Swiss Webster
Mouse Eotaxin-2	555.6	314.2	309.7	417.6
Mouse MCP-2	486256.0	475956.8	418476.0	257471.2
Mouse ITAC	87.8	ND	44.0	160.1
Mouse Fractal-kine	107.6	165.8	132.1	166.8
Mouse MCP-3	267.5	482.0	381.8	536.6
Mouse Lympho-tactin	118.4	183.1	152.2	144.4
Mouse MIP-2	5.5	14.5	5.9	6.5
Mouse MIP-1 $\gamma$	43485.0	47171.0	36434.0	39529.0

ND = Non-detectable

## LEGENDplex™ Mouse Proinflammatory Chemokine Panel 2

Pooled mouse EDTA plasma samples representing 4 different strains were tested for endogenous levels of proinflammatory chemokines. The concentrations (pg/mL) measured are shown below:

Analyte	BALB/C	C57BL/6	CD-1	Swiss Webster
Mouse Eotaxin-2	564.6	354.4	308.6	382.2
Mouse MCP-2	426764.0	376632.8	322300.0	215257.0
Mouse ITAC	129.9	ND	108.1	133.0
Mouse Fractalkine	106.0	155.9	114.8	120.1
Mouse MCP-3	291.2	395.0	114.8	120.1
Mouse Lymphotactin	108.0	168.1	139.6	98.3
Mouse MIP-2	4.8	9.4	5.1	4.8
Mouse MIP-1 $\gamma$	46836.0	55080.0	42788.0	44079.0

ND = Non-detectable

Pooled mouse citrate plasma samples representing 4 different strains were tested for endogenous levels of proinflammatory chemokines. The concentrations (pg/mL) measured are shown below:

Analyte	BALB/C	C57BL/6	CD-1	Swiss Webster
Mouse Eotaxin-2	445.9	219.1	249.8	359.3
Mouse MCP-2	367688.0	298679.2	212872.0	192179.2
Mouse ITAC	100.2	ND	124.1	214.9
Mouse Fractalkine	112.8	122.7	85.7	100.4
Mouse MCP-3	405.1	436.9	249.5	481.6
Mouse Lymphotactin	92.2	163.7	136.9	108.9
Mouse MIP-2	7.0	6.5	4.0	6.4
Mouse MIP-1 $\gamma$	38052.0	48540.0	34001.0	46956.0

ND = Non-detectable

### Cell Culture Supernatant

Mouse splenocyte (1 x 10<sup>6</sup> cells/mL) were cultured under various conditions (LPS, 1  $\mu$ g/mL; anti-CD3 precoated overnight, 1  $\mu$ g/mL; anti-CD28, 1  $\mu$ g/mL; PMA, 20 ng/mL; Ionomycin, 500 ng/mL; IFN- $\gamma$ , 100 ng/mL; PHA,

## LEGENDplex™ Mouse Proinflammatory Chemokine Panel 2

1 µg/mL; R848, 2 µg/mL; Poly I:C, 50 µg/mL). Supernatants were collected after 72 hours and assayed with the LEGENDplex™ Mouse Proinflammatory Chemokine Panel 2 kit. The results (all in pg/mL) are summarized below.

Analyte	Control	LPS	CD3 + CD28	PMA + Ionomycin
Mouse Eotaxin-2	14.7	3.7	1554.4	238.0
Mouse MCP-2	ND	ND	5.6	12.3
Mouse ITAC	ND	ND	ND	ND
Mouse Fractalkine	ND	ND	ND	ND
Mouse MCP-3	15.0	36.8	10.9	112.5
Mouse Lymphotactin	23.0	150.9	11249.4	8992.2
Mouse MIP-2	3.3	230.2	54.9	319.2
Mouse MIP-1γ	390.9	254.0	2463.8	3298.4

Analyte	LPS + IFN-γ	PHA	R848	Poly I:C
Mouse Eotaxin-2	15.3	9.3	3.1	27.6
Mouse MCP-2	ND	ND	10.4	ND
Mouse ITAC	ND	ND	ND	ND
Mouse Fractalkine	ND	ND	ND	ND
Mouse MCP-3	51.3	37.9	562.3	27.9
Mouse Lymphotactin	425.0	30.1	124.0	111.0
Mouse MIP-2	228.0	48.2	32.6	8.5
Mouse MIP-1γ	125.6	494.7	367.5	249.4

ND = Non-detectable

Mouse fibroblast cells were cultured to approximately 40% confluency and stimulated under various conditions (TNF-α, 1 ng/mL; IL-4, 50 ng/mL; IL-13, 50 ng/mL). Cell culture supernatants were collected after 48 hours and assayed with the LEGENDplex™ Mouse Proinflammatory Chemokine Panel 2 kit. The results (all in pg/mL) are summarized below.

## LEGENDplex™ Mouse Proinflammatory Chemokine Panel 2

Analyte	Control	TNF- $\alpha$ + IL-4	TNF- $\alpha$ + IL-13	TNF- $\alpha$ + IL-4 + IL-13
Mouse Eotaxin-2	4.3	6.9	5.2	6.7
Mouse MCP-2	17305.0	43615.0	37585.0	38982.0
Mouse ITAC	ND	13.9	18.2	19.1
Mouse Fractalkine	483.2	443.8	376.3	368.8
Mouse MCP-3	100580.0	233850.0	247070.0	237090.0
Mouse Lymphotactin	ND	ND	ND	ND
Mouse MIP-2	359.2	2829.0	3324.6	3034.5
Mouse MIP-1 $\gamma$	5343.9	6631.7	6631.7	6206.6

ND = Non-detectable

Mouse RAW 264.7 macrophage cells ( $1 \times 10^6$  cells/mL) were cultured under various conditions (LPS, 1  $\mu$ g/mL; GM-CSF, 100 ng/mL; IFN- $\gamma$ , 100 ng/mL). Supernatants were collected after 72 hours and assayed with the LEGENDplex™ Mouse Proinflammatory Chemokine Panel 2 kit. The results (all in pg/mL) are summarized below.

Analyte	Control	LPS	LPS + GM-CSF	LPS + IFN- $\gamma$
Mouse Eotaxin-2	2756.6	553.5	776.6	633.7
Mouse MCP-2	2.9	5.3	6.9	4.3
Mouse ITAC	ND	388.7	41722.0	353.4
Mouse Fractalkine	ND	ND	ND	ND
Mouse MCP-3	4.1	908.4	479.5	1707.4
Mouse Lymphotactin	ND	8.4	11.4	10.0
Mouse MIP-2	549.3	285740.0	32920.0	353570.0
Mouse MIP-1 $\gamma$	71278.0	321376.0	75985.0	384194.0

ND = Non-detectable

## TROUBLESHOOTING

Problem	Possible Cause	Solution
Bead population shifting upward or downward during acquisition	The strong PE signal from high concentration samples or standards may spill over to classification Channel (e.g., FL3/FL4/APC) and mess up the bead separation.	Optimize instrument settings using Kit Setup Beads, and make appropriate compensation between channels.
Filter plate will not vacuum or some wells clogged	Vacuum pressure is insufficient or vacuum manifold does not seal properly.	Increase vacuum pressure such that 0.2 mL buffer can be suctioned in 3-5 seconds. Clean the vacuum manifold and make sure no debris on the manifold. Press down the plate on the manifold to make a good seal.
	Samples have insoluble particles or sample is too viscous (e.g., serum and plasma samples)	<p>Centrifuge samples just prior to assay setup and use supernatant. If high lipid content is present, remove lipid layer after centrifugation. Sample may need dilution if too viscous.</p> <p>If some wells are still clogged during washing, try the following:</p> <ol style="list-style-type: none"> <li>1). Add buffer to all the wells, pipette up and down the clogged wells and vacuum again.</li> <li>2). Use a piece of clean wipe, wipe the under side of the clogged wells and vacuum again.</li> <li>3). Take a thin needle (e.g., insulin needle), while holding the plate upward, poke the little hole under each of the clogged wells and vacuum again. Do not poke too hard or too deep as it may damage the filter and cause leaking.</li> </ol>
	Filter plate was used without pre-wet.	Pre-wet plate with wash buffer before running the assay.

## LEGENDplex™ Mouse Proinflammatory Chemokine Panel 2

Insufficient bead count or slow reading	Beads inappropriately prepared	Sonicate bead vials and vortex just prior to addition. Agitate mixed beads intermittently in reservoir while pipetting this into the plate.
	Samples cause beads aggregation due to particulate matter or viscosity.	Centrifuge samples just prior to assay setup and use supernatant. If high lipid content is present, remove lipid layer after centrifugation. Sample may need dilution if too viscous.
	Beads were lost during washing for in-tube assay	Make sure beads are spun down by visually check the pellet (beads are in light blue or blue color). Be very careful when removing supernatant during washing.
	Probe might be partially clogged.	Sample probe may need to be cleaned, or if needed, probe should be removed and sonicated.
Plate leaked	Vacuum pressure set too high	Adjust vacuum pressure such that 0.2 mL buffer can be suctioned in 3-5 seconds. Do not exceed 10" Hg of vacuum.
	Plate set directly on table or absorbent towels during incubations or reagent additions	Set plate on plate holder or raised edge so bottom of filter is not touching any surface.
	Liquid present on the under side of the plate after vacuum	After washing, press down plate firmly on a stack of clean paper towels to dry the underside of the plate.
	Pipette touching and damaged plate filter during additions.	Pipette to the side of wells.
High Background	Background wells were contaminated	Avoid cross-well contamination by changing tips between pipetting when performing the assay using a multichannel pipette.
	Insufficient washes	The background may be due to non-specific binding of SA-PE. Increase number of washes.
Debris (FSC/SSC) during sample acquisition	Debris or platelet may exist in sample solution.	Centrifuge samples before analyzing samples. Remove platelet as much as possible.



## LEGENDplex™ Mouse Proinflammatory Chemokine Panel 2

Variation between Duplicate samples	Beads aggregation	Sonicate and vortex the Beads prior to use.
	Multichannel pipette may not be calibrated or inconsistent Pipetting	Calibrate Pipette. Ensure good pipetting practice. Prime pipette before use may help.
	Plate washing was not uniform	Make sure all reagents are vacuumed out completely in all wash steps.
	Samples may contain particulate matters.	Centrifuge samples just prior to assay setup and use supernatant. If high lipid content is present, remove lipid layer after centrifugation. Sample may need dilution if too viscous.
Low or poor standard curve signal	The standard was incorrectly reconstituted, stored or diluted	Follow the protocol to reconstitute, store and dilute standard. Double check your calculation.
	Wrong or short incubation time	Ensure the time of all incubations was appropriate.
Signals too high, standard curves saturated	PMT value for FL2/PE set too high	Make sure the PMT setting for the reporter channel is appropriate
	Plate incubation time was too long	Use shorter incubation time.
Sample readings are out of range	Samples contain no or below detectable levels of analyte	Make sure the experiment to generate the samples worked. Use proper positive controls.
	Samples concentrations higher than highest standard point.	Dilute samples and analyze again.
	Standard curve was saturated at higher end of curve.	Make sure the PMT setting for the reporter channel is appropriate. Use shorter incubation time if incubation time was too long
Missed beads populations during reading, or distribution is unequal	Sample may cause some beads to aggregate.	Centrifuge samples just prior to assay setup and use supernatant. If high lipid content is present, remove lipid layer after centrifugation. Sample may need dilution if too viscous.
	Beads populations are not mixed properly	Make sure all bead populations are mixed. and in similar numbers.



**PLATE MAP (for in-plate assay)**

	1	2	3	4	5	6	7	8	9	10	11	12
<b>A</b>	<b>C0</b>	<b>C4</b>	Sample1	Sample5	Sample 9	Sample 13	Sample 17	Sample 21	Sample 25	Sample 29	Sample 33	Sample 37
<b>B</b>	<b>C0</b>	<b>C4</b>	Sample1	Sample5	Sample 9	Sample 13	Sample 17	Sample 21	Sample 25	Sample 29	Sample 33	Sample 37
<b>C</b>	<b>C1</b>	<b>C5</b>	Sample2	Sample6	Sample 10	Sample 14	Sample 18	Sample 22	Sample 26	Sample 30	Sample 34	Sample 38
<b>D</b>	<b>C1</b>	<b>C5</b>	Sample2	Sample6	Sample 10	Sample 14	Sample 18	Sample 22	Sample 26	Sample 30	Sample 34	Sample 38
<b>E</b>	<b>C2</b>	<b>C6</b>	Sample3	Sample7	Sample 11	Sample 15	Sample 19	Sample 23	Sample 27	Sample 31	Sample 35	Sample 39
<b>F</b>	<b>C2</b>	<b>C6</b>	Sample3	Sample7	Sample 11	Sample 15	Sample 19	Sample 23	Sample 27	Sample 31	Sample 35	Sample 39
<b>G</b>	<b>C3</b>	<b>C7</b>	Sample4	Sample8	Sample 12	Sample 16	Sample 20	Sample 24	Sample 28	Sample 32	Sample 36	Sample 40
<b>H</b>	<b>C3</b>	<b>C7</b>	Sample4	Sample8	Sample 12	Sample 16	Sample 20	Sample 24	Sample 28	Sample 32	Sample 36	Sample 40



LEGENDplex<sup>™</sup> Kits are manufactured by **BioLegend**  
8999 BioLegend Way  
San Diego, CA 92121  
Tel: 1.858.768.5800  
Tel: US & Canada Toll-Free: 1.877.Bio-Legend (1.877.246.5343)  
Fax: 1.877.455.9587  
Email: [info@biolegend.com](mailto:info@biolegend.com)  
[biolegend.com](http://biolegend.com)

For a complete list of world-wide BioLegend offices and distributors,  
please visit our website at: [biolegend.com](http://biolegend.com)