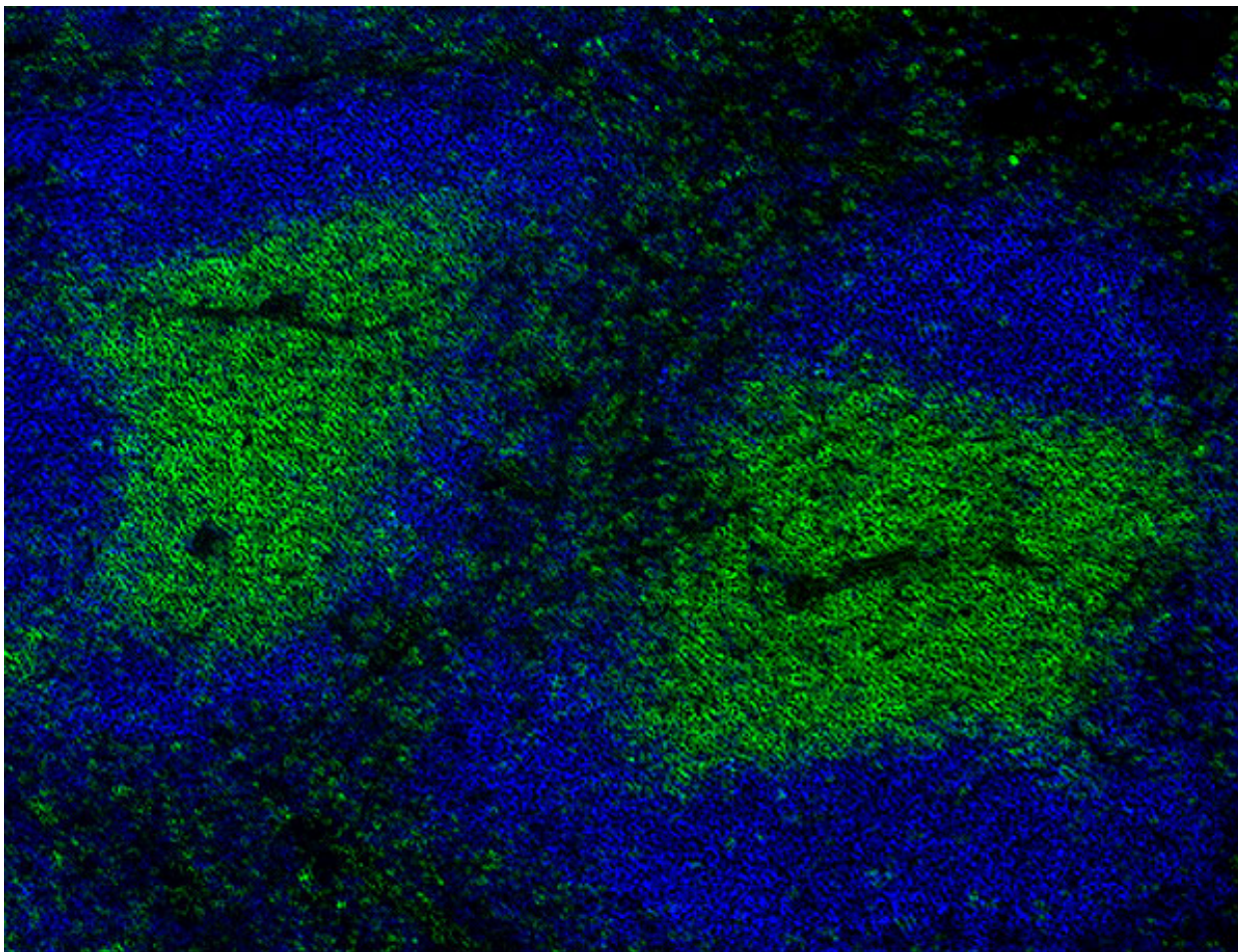


Alexa Fluor[®] 488 anti-mouse CD3 Antibody



C57BL/6 mouse frozen spleen section was fixed with 4% paraformaldehyde (PFA) for 10 minutes at room temperature and blocked with 5% FBS for 30 minutes at room temperature. Then, the section was stained with 10 µg/ml CD3 (Clone 17A2) Alexa Fluor[®] 488 (green) and B220 (clone RA3-6B2) Brilliant Violet 421™ (blue), overnight at 4°C. The image was captured by 10X objective.