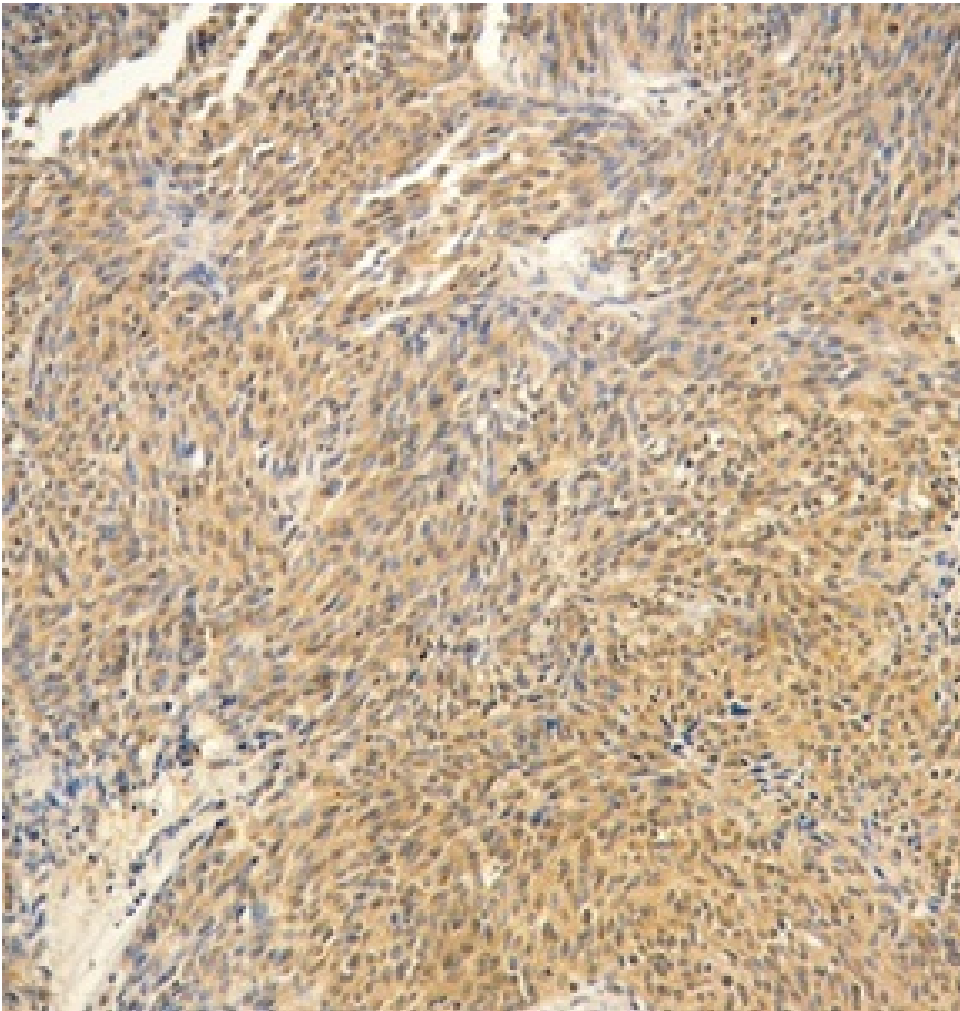


---

**Purified anti-Notch1 $\beta$  Antibody**



IHC staining of clone 5C12 on formalin-fixed paraffin-embedded human stomach tissue at 10  $\mu$ g/ml. Following Sodium Citrate antigen retrieval, the tissue was incubated with the primary antibody for 24 hours at 2-8°C. BioLegend's Ultra Streptavidin (USA) HRP Detection Kit (Multi-Species) was used for detection.