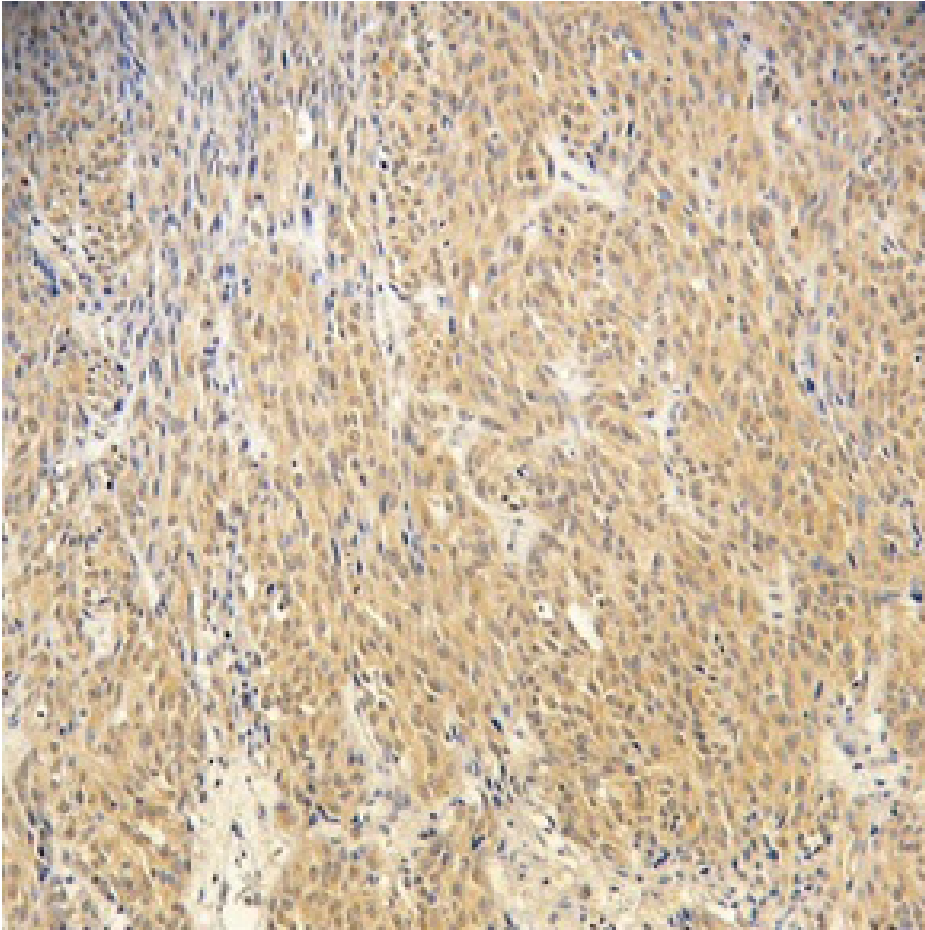


Purified anti-Notch1 β Antibody



IHC staining of clone 6B11/Notch on formalin-fixed paraffin-embedded human stomach tissue at 10 $\mu\text{g}/\text{ml}$. Following Sodium Citrate antigen retrieval, the tissue was incubated with the primary antibody for 24 hours at 2-8°C. BioLegend's Ultra Streptavidin (USA) HRP Detection Kit (Multi-Species) was used for detection.