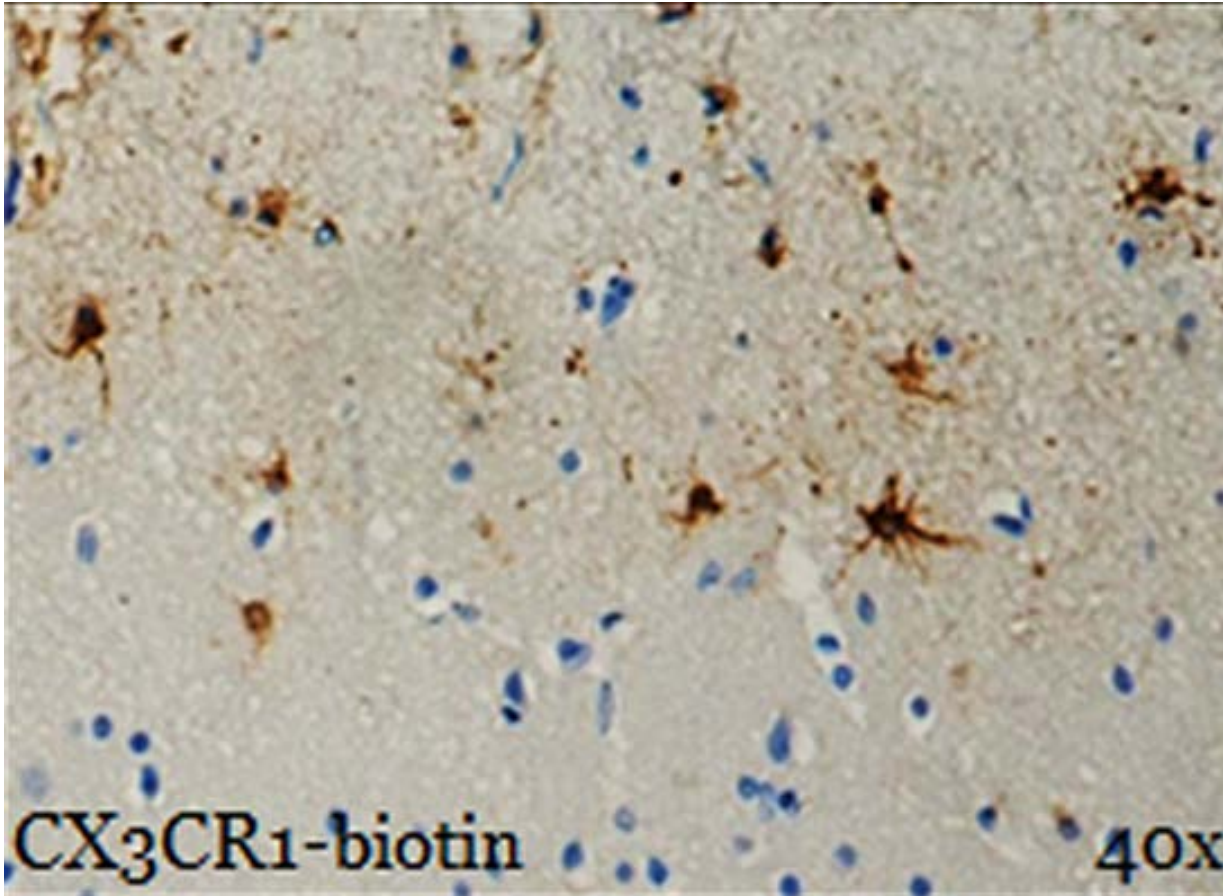


Biotin anti-CX3CR1 Antibody



IHC staining of anti-CX3CR1 antibody (clone 8E10.D9) conjugated to biotin on formalin-fixed, paraffin-embedded human Alzheimer disease brain tissue. Following antigen retrieval using Sodium Citrate H.E.I.R., the tissue was incubated with Biotin-conjugated antibody at 20 µg/mL overnight at 4°C. BioLegend's Ultra-Streptavidin (USA) HRP kit was used for detection, followed by hematoxylin counterstaining.