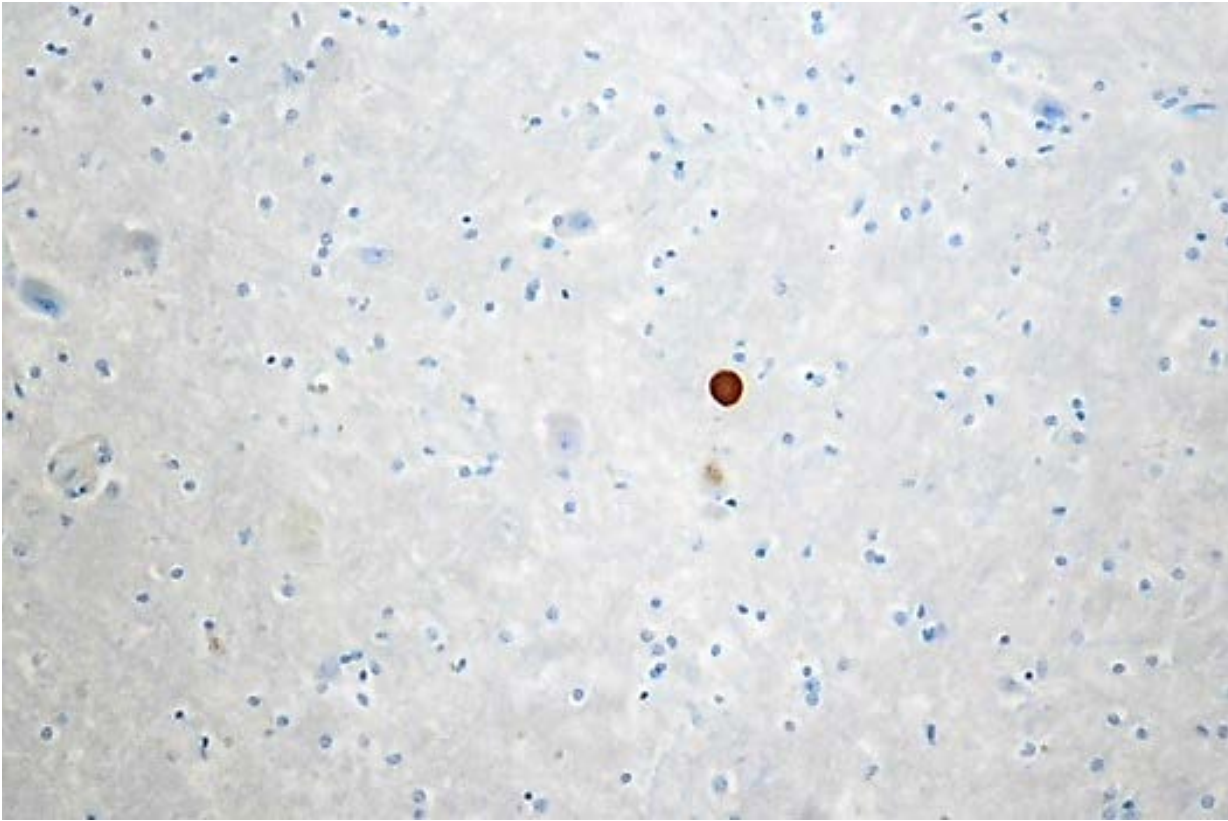
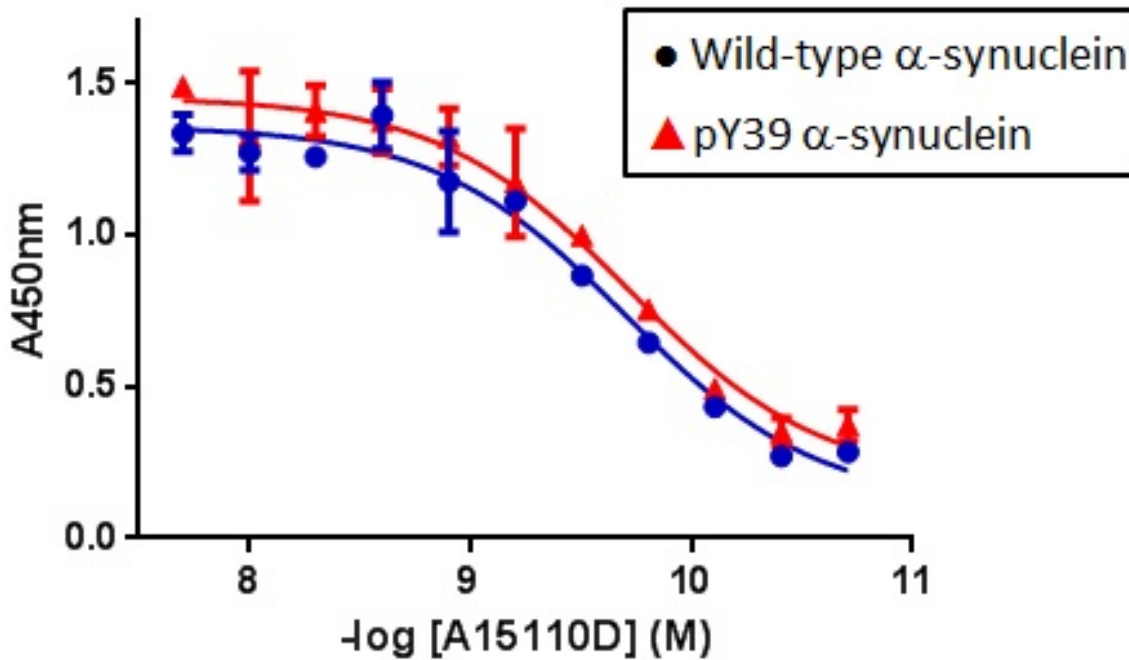


Purified anti- α -Synuclein, 34-45 Antibody



IHC staining of α -synuclein deposits with purified anti- α -Synuclein, 34-45 antibody (clone A15110D) on formalin-fixed, paraffin-embedded Parkinson's disease brain tissue. Following antigen retrieval using 88% formic acid, the tissue was incubated with the primary antibody at 1 μ g/mL overnight at 4°C. BioLegend's Ultra-Streptavidin (USA) HRP kit was used for detection followed by hematoxylin counterstaining, according to the protocol provided.

Purified anti- α -Synuclein, 34-45 Antibody



Direct ELISA of purified anti- α -Synuclein, 34-45 antibody (clone A15110D) binding to plate-immobilized recombinant human unmodified and pY39 α -synuclein protein. ELISA was performed by coating wells with 150 ng of each recombinant α -synuclein protein for two hours at 37°C, the wells were then incubated with the primary antibody at 37°C for one hour, followed by incubation with horseradish peroxidase labeled goat anti-mouse secondary antibody. TMB (3, 3', 5, 5' tetramethylbenzidine) was used as the detection system.