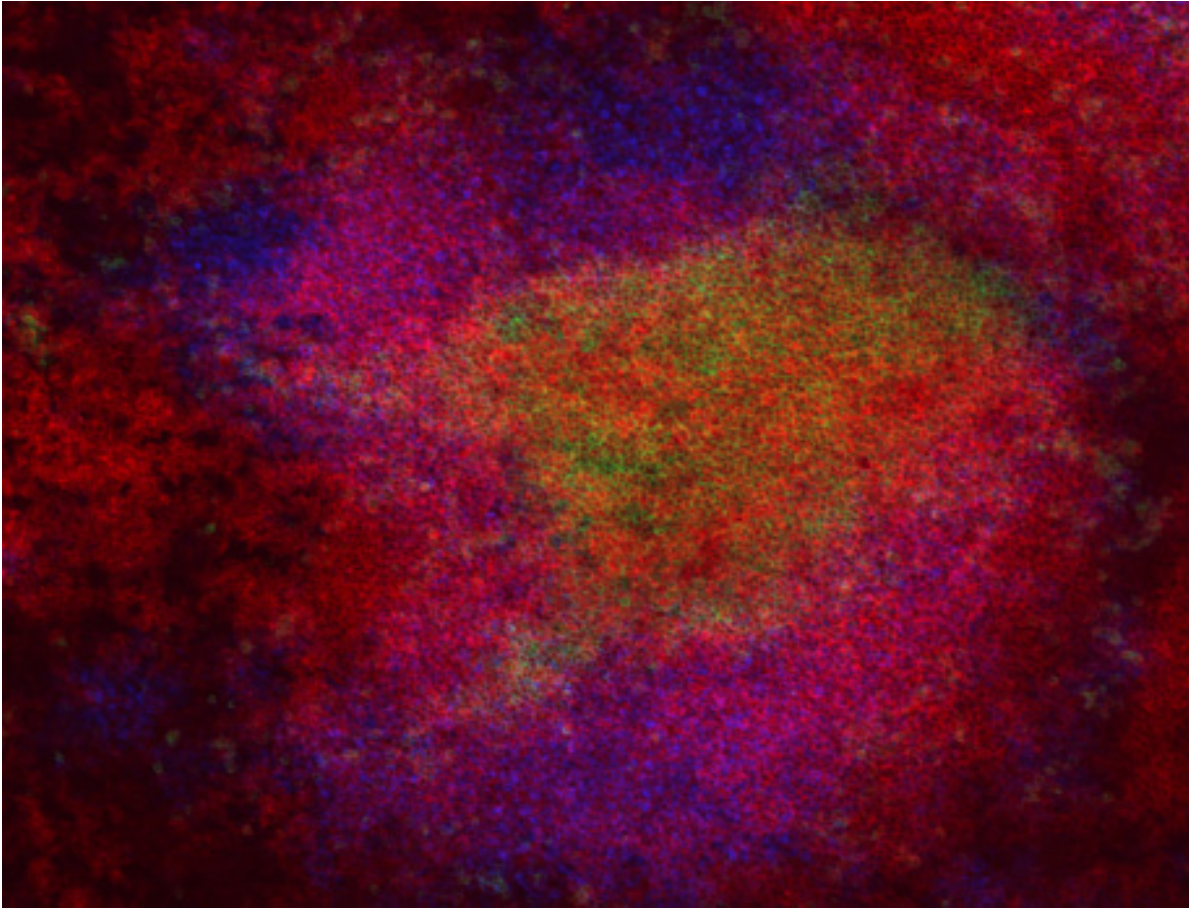


**Alexa Fluor® 594 anti-mouse CD45.1 Antibody**



SJL mouse frozen spleen section was fixed with 4% paraformaldehyde (PFA) for ten minutes at room temperature and blocked with 5% rat serum + FBS for one hour at room temperature. Then the section was stained with 2.5 µg/ml of CD45.1 (clone A20) Alexa Fluor® 594 (red), 5 µg/ml of CD3 (clone 17A2) Alexa Fluor® 647 (green), and 5 µg/ml of B220 (clone RA3-6B2) Brilliant Violet 421™ (blue) at room temperature for two hours. The image was captured with a 10X objective.