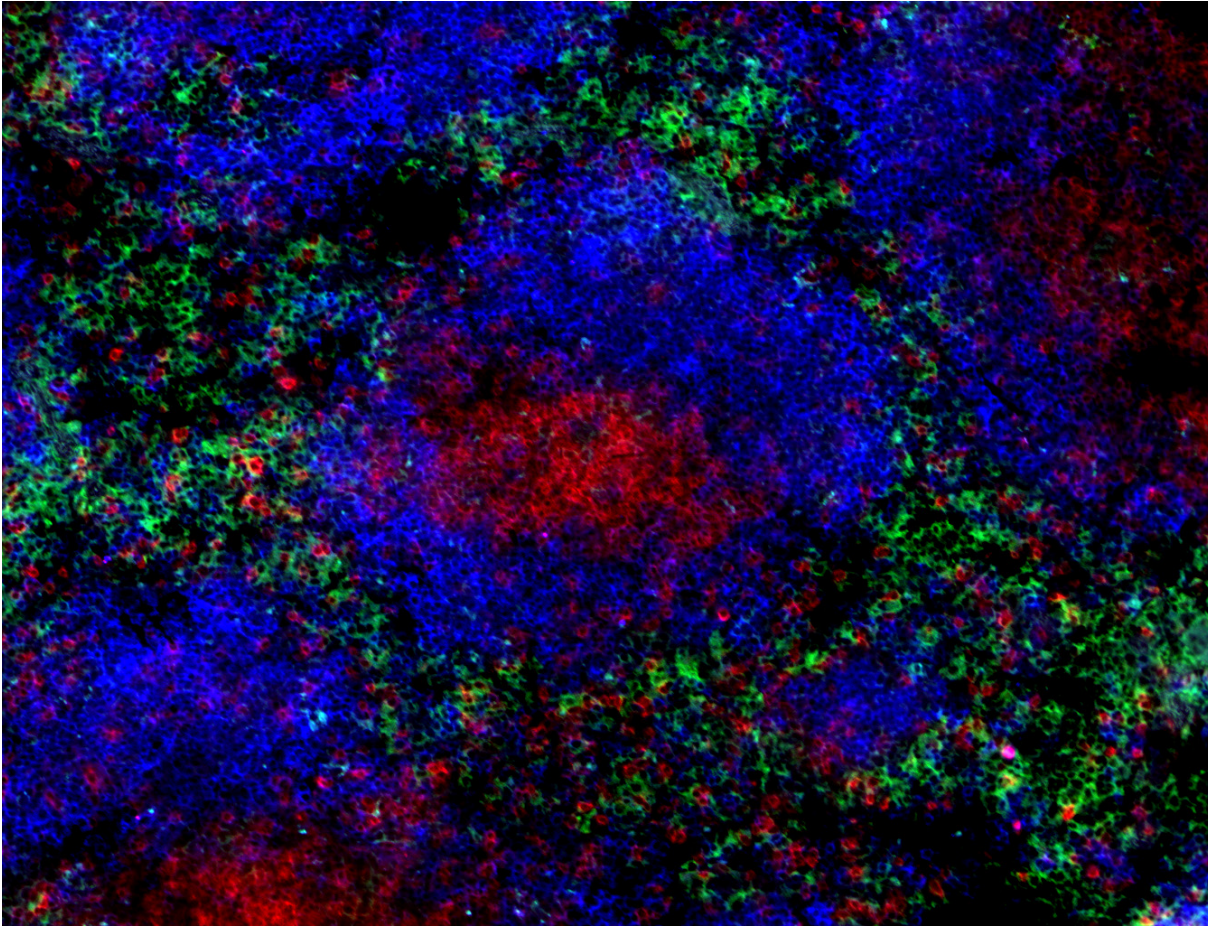


Alexa Fluor® 488 anti-mouse F4/80 Antibody



C57BL/6 mouse frozen spleen section was fixed with 4% paraformaldehyde (PFA) for ten minutes at room temperature and blocked with 5% FBS plus 5% rat/mouse serum for 30 minutes at room temperature. Then the section was stained with 5 µg/ml of anti-mouse F4/80 (clone BM8) Alexa Fluor® 488 (green), anti-mouse/human CD45R/B220 (clone RA3-6B2) Brilliant Violet 510™ (blue), and anti-mouse CD3 (clone 17A2) Brilliant Violet 421™ (red) overnight at 4°C. The image was captured with a 10X objective.