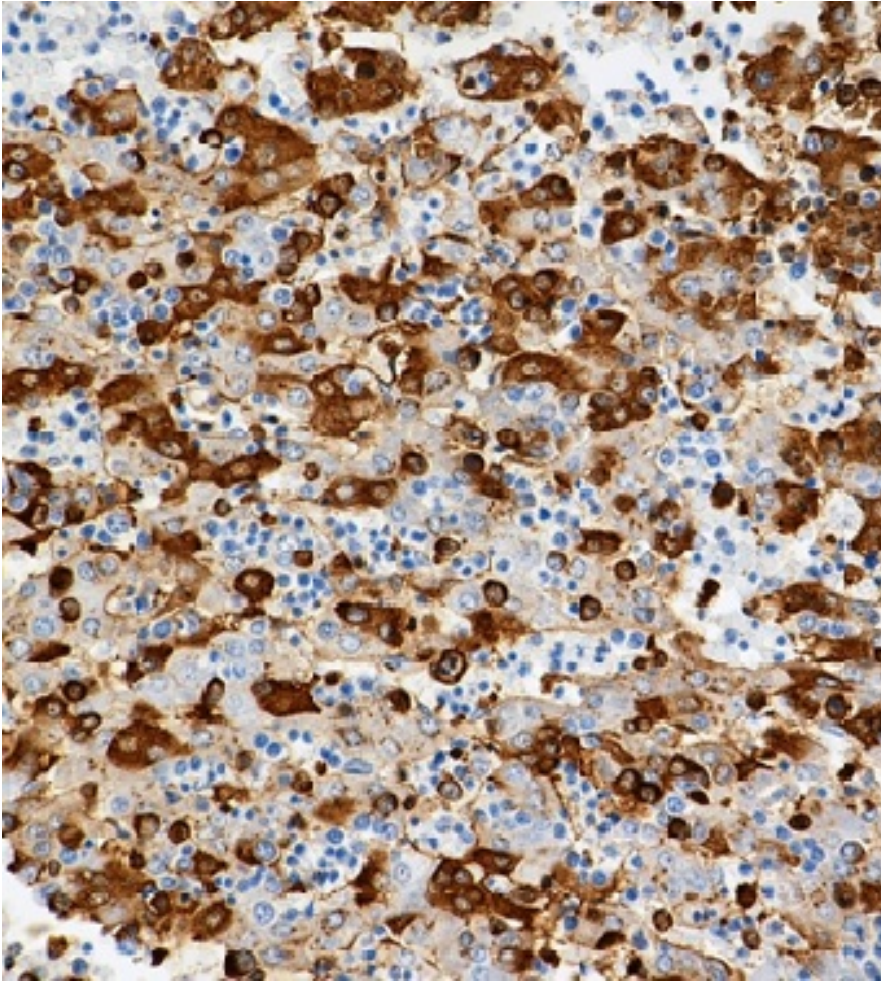


**Purified anti- $\alpha$ -1-Fetoprotein Antibody**



IHC staining of anti- $\alpha$ -1-Fetoprotein antibody (clone BSB-23) on formalin-fixed paraffin-embedded human fetal liver tissue. Following antigen retrieval using sodium citrate, the tissue was incubated with the primary antibody for 30 minutes at room temperature at 1  $\mu$ g/mL. BioLegend's Ultra Streptavidin (USA) HRP Detection Kit was used for detection, followed by counterstaining with hematoxylin.