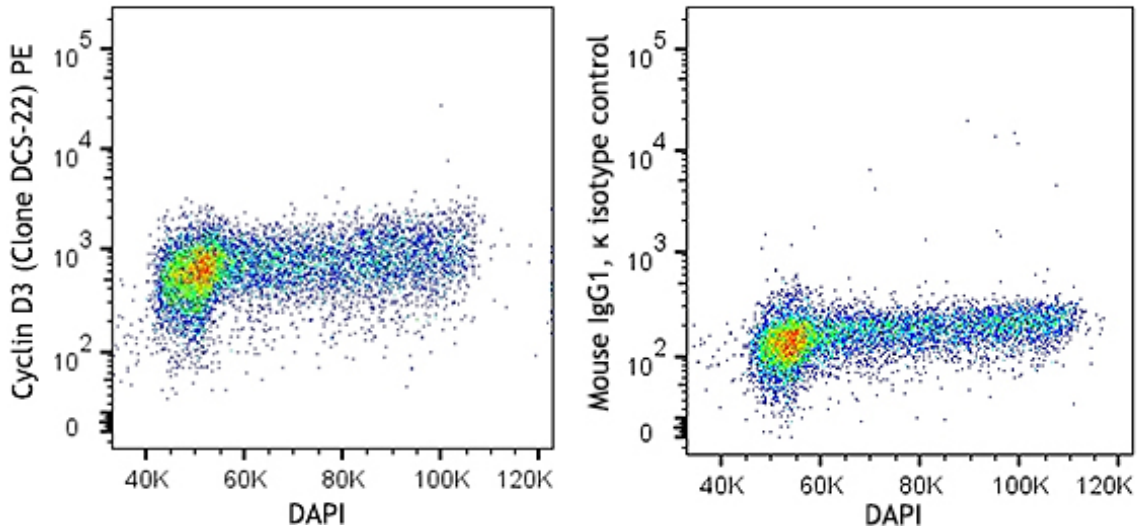


## Purified anti-Cyclin D3 Antibody

True-Phos™ Perm Buffer is optimal but 70% Ethanol is an option.



PHA-stimulated (3 days) human peripheral blood mononuclear cells were fixed and permeabilized with cold 70% ethanol, then intracellularly stained with DAPI and anti-Cyclin D3 (clone DCS-22) PE (top) or mouse IgG1, κ isotype control PE (bottom).