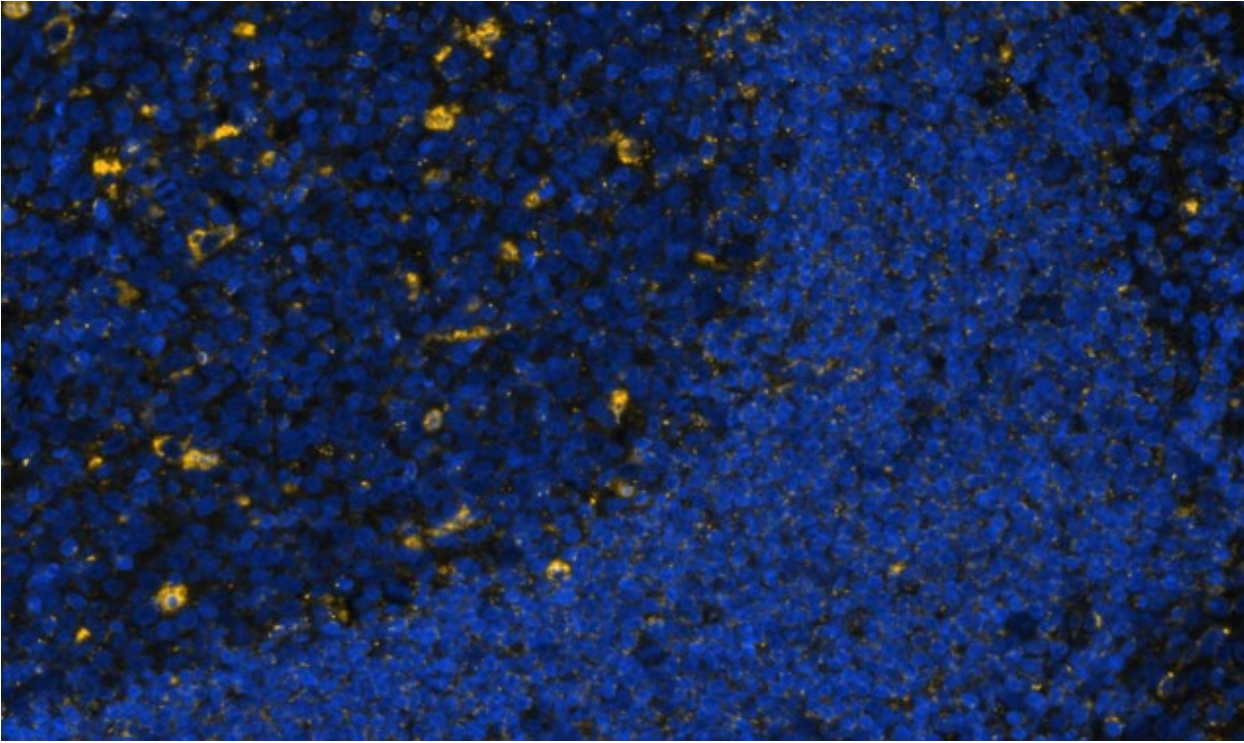


Purified anti-human CD107a Antibody



SeqIF™ (sequential immunofluorescence) staining on COMET™ of anti-CD107a (LAMP-1) (clone H4A3, yellow) on formalin-fixed paraffin-embedded human pancreatic carcinoma tissue at 5 µg/mL. Alexa Fluor™ Plus 647 Goat anti-Mouse IgG antibody (Lunaphore, Cat. No. DR647MS) was used as a secondary antibody. Nuclei were counterstained with DAPI (blue). Tissue underwent an all-in-one dewaxing and antigen retrieval preprocessing.