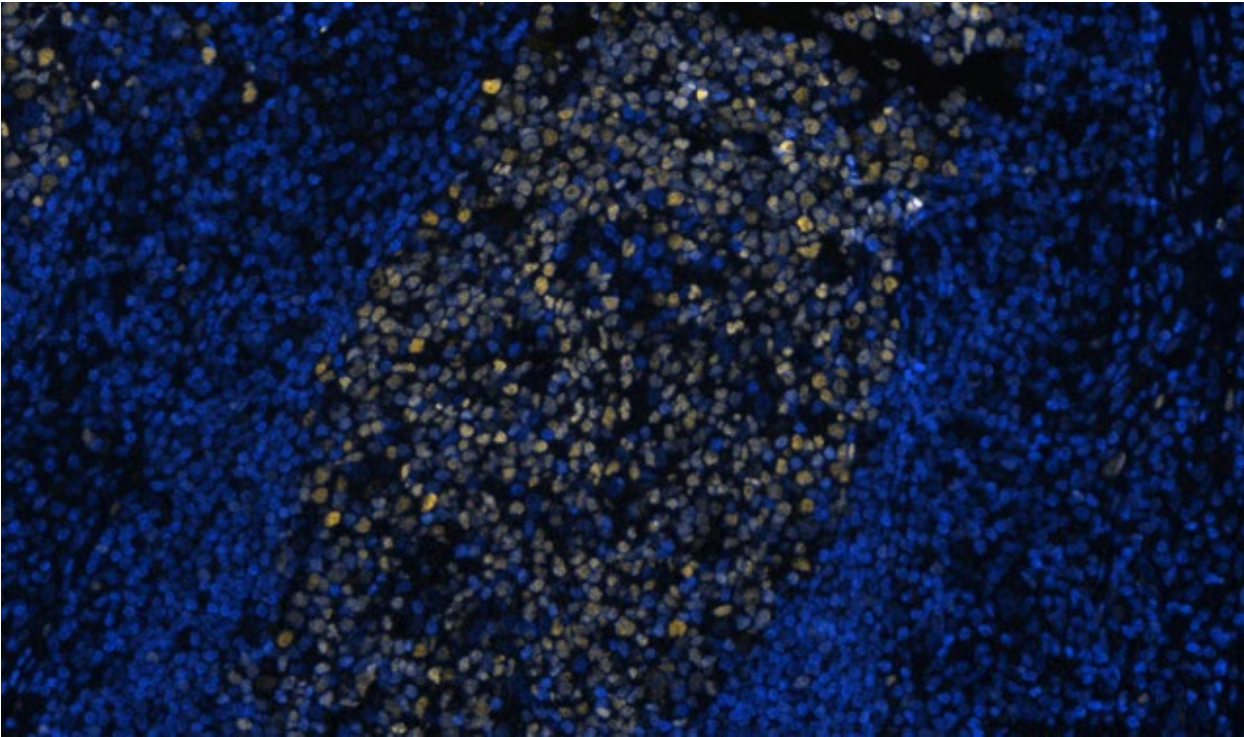


Purified anti-mouse/human BCL-6 Antibody



SeqIF™ (sequential immunofluorescence) staining on COMET™ of Purified anti-BCL-6 (clone IG191E/A8) (yellow) on formalin-fixed paraffin-embedded human tonsil tissue at 1 µg/mL. Alexa Fluor™ Plus 647 Goat anti-Mouse IgG antibody (Lunaphore, Cat. No. DR647MS) was used as a secondary antibody. Nuclei were counterstained with DAPI (blue). Tissue underwent an all-in-one dewaxing and antigen retrieval preprocessing.