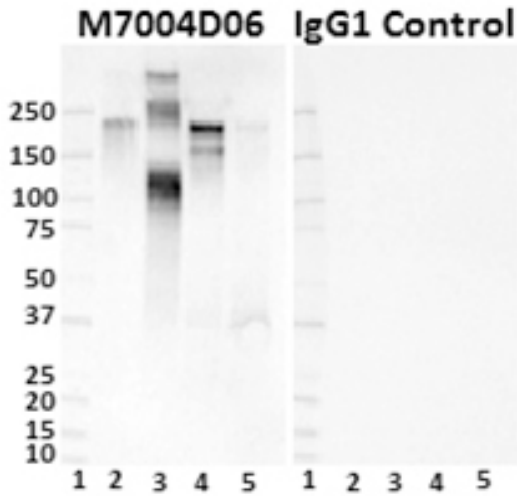


**Purified anti-Tau Phospho (Thr181) Antibody**



Western blot of anti-Tau Phospho (Thr181) antibody (clone M7004D06) and isotype-matched control IgG1. Lane 1: Molecular weight marker; Lane 2: 2  $\mu$ g of Tau paired helical filaments; Lane 3: 20 ng of BSA-pT181 Tau peptide; Lane 4: 30  $\mu$ g of Parkinson's disease human brain lysate; Lane 5: 30  $\mu$ g of Alzheimer's disease Human brain lysate. Blots were incubated overnight at 4°C with 10  $\mu$ g/ml of the primary antibody, followed by horseradish peroxidase labeled goat anti-mouse secondary antibody.