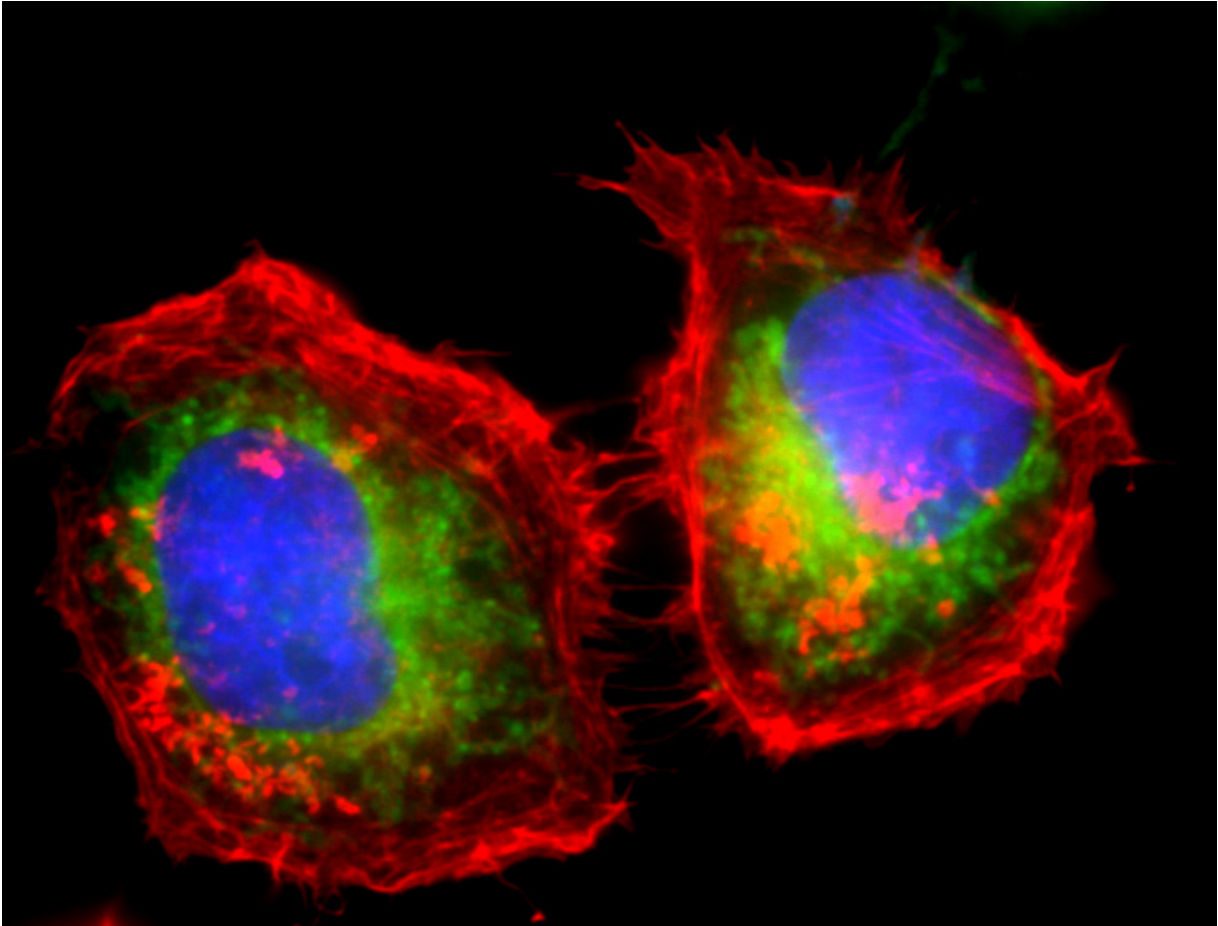


MitoSpy™ Green FM



HeLa cells were stained with 250 nM of MitoSpy™ Green FM (green) for 20 minutes and fixed with 4% paraformaldehyde (PFA) for ten minutes. Then the cells were stained with Alexa Fluor® 594 phalloidin for 20 minutes (red) and counterstained with DAPI (blue). The image was captured with a 60x objective.

MitoSpy™ Green FM: Chemical Structure

