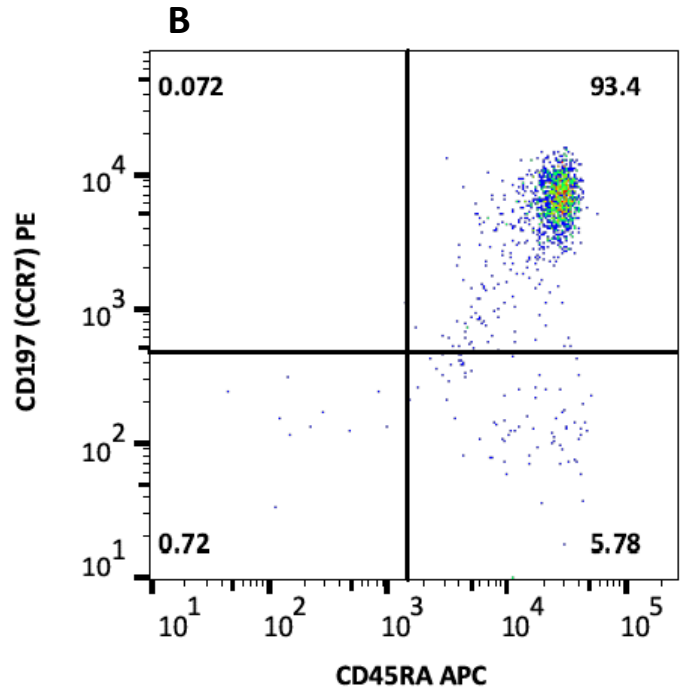
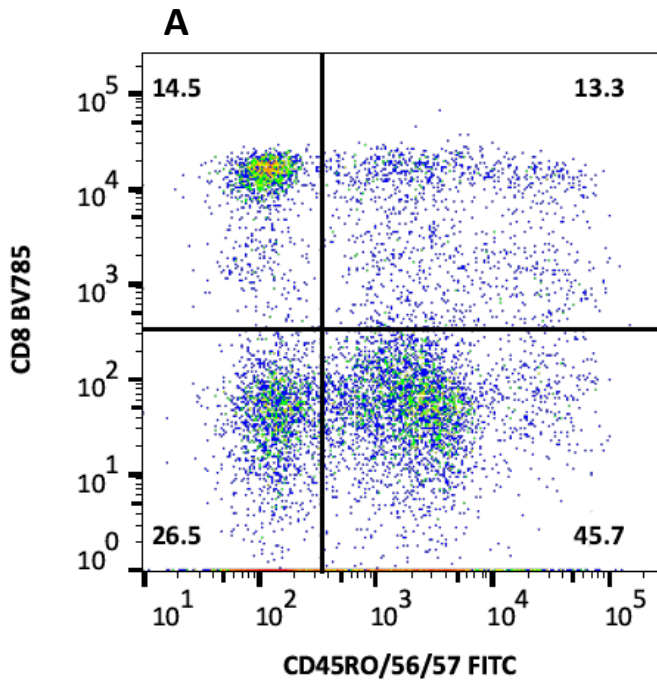
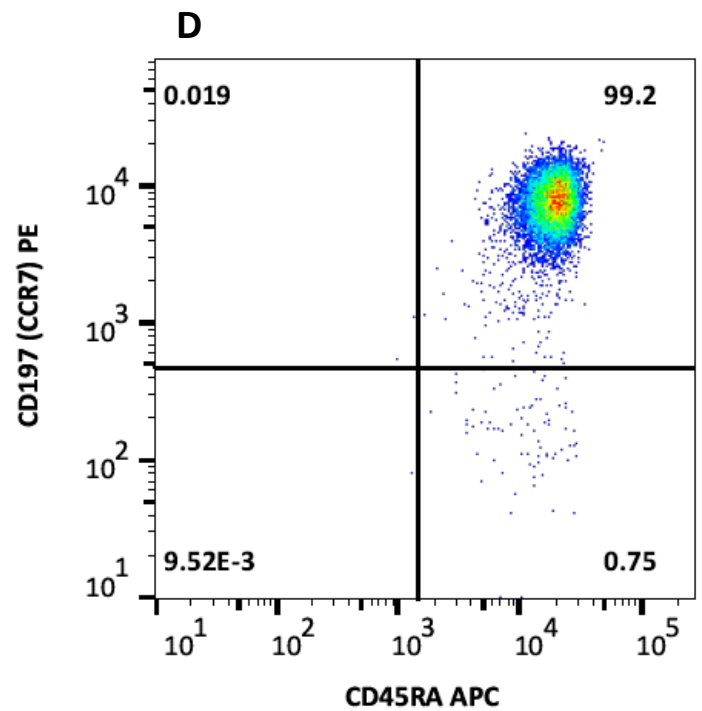
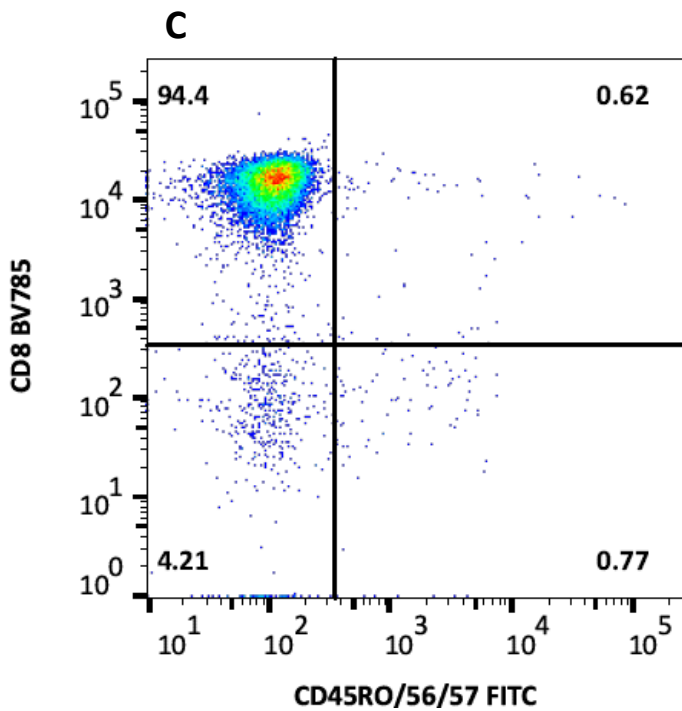


MojoSort™ Human CD8 Naïve T Cell Isolation Kit

Before Isolation

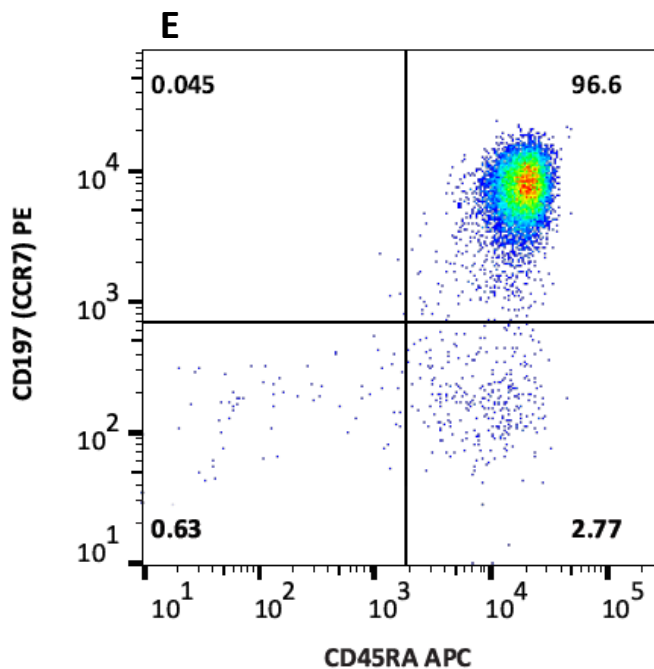


After MojoSort™ Isolation



MojoSort™ Human CD8 Naïve T Cell Isolation Kit

After MojoSort™ Isolation



A single cell suspension from human peripheral blood mononuclear cells (PBMCs) was prepared to isolate CD8⁺ Naïve T cells using the MojoSort™ Human CD8 Naïve T cell Isolation Kit. **A)** Cells before isolation and **C)** Cells after isolation, stained with CD8 (clone SK1) Brilliant Violet 785™ and CD45RO (clone UCHL1) / CD56 (clone HCD56) / CD57 (clone HCD57) FITC. **B)** Cells before isolation and **D)** Cells after isolation stained with CD197 (CCR7) (clone G043H7) PE and CD45RA (clone HI100) APC, gated on CD8⁺/CD45RO⁻/CD56⁻/CD57⁻ from **A)** and **C)**, respectively. **E)** CD197 and CD45RA profile of isolated cells analyzed directly without CD8⁺/CD45RO⁻/CD56⁻/CD57⁻ parent gate. Dead cells were excluded by 7-AAD.