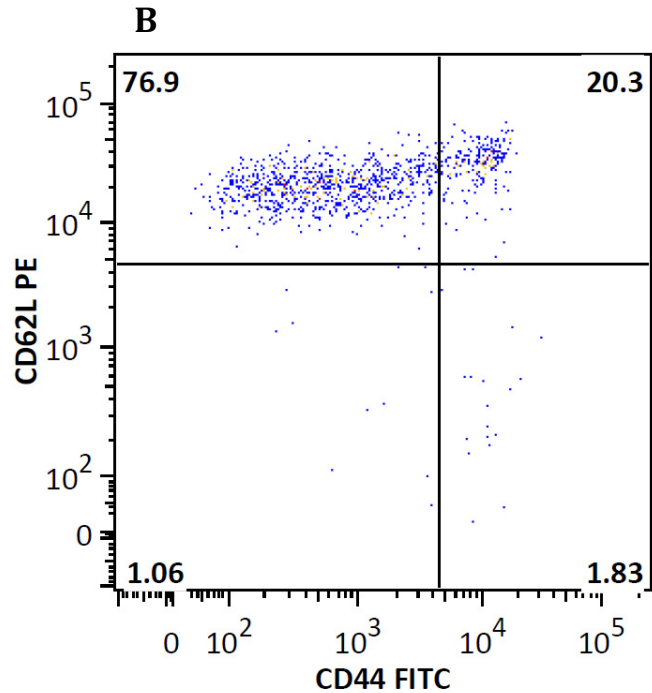
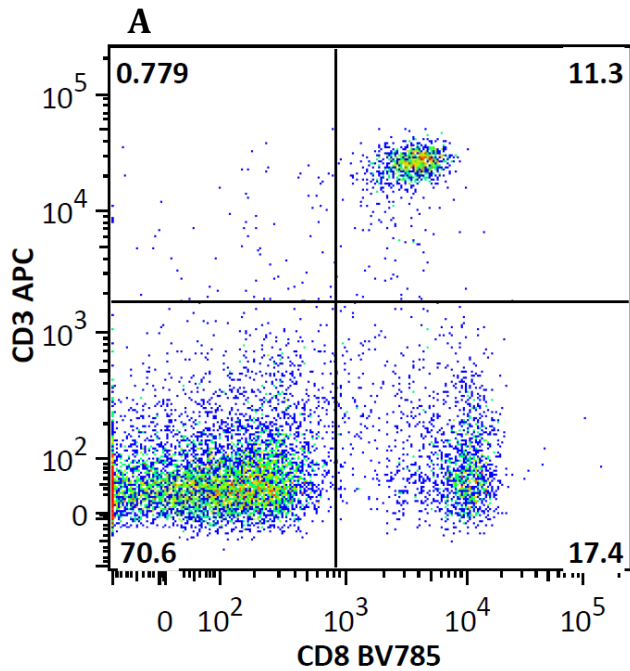
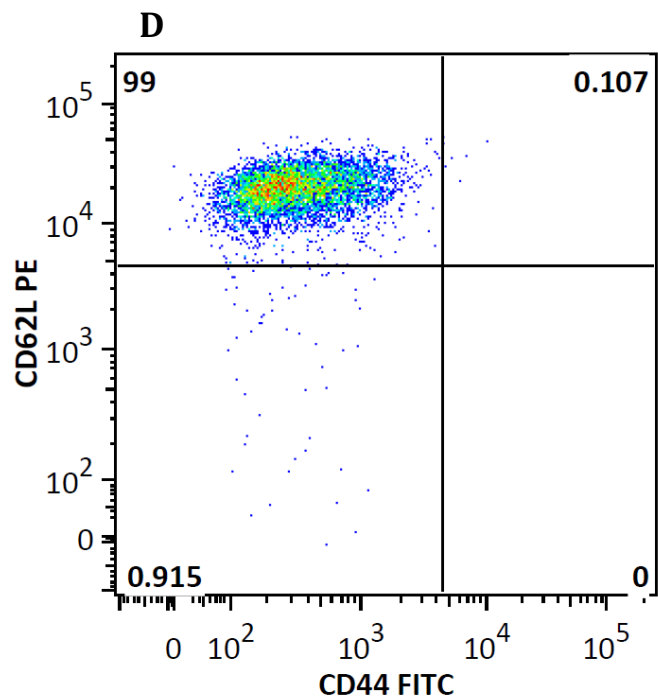
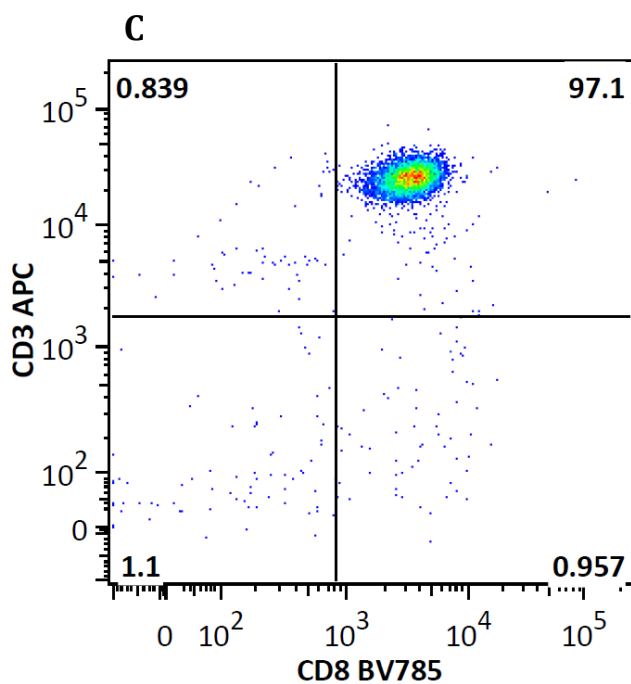
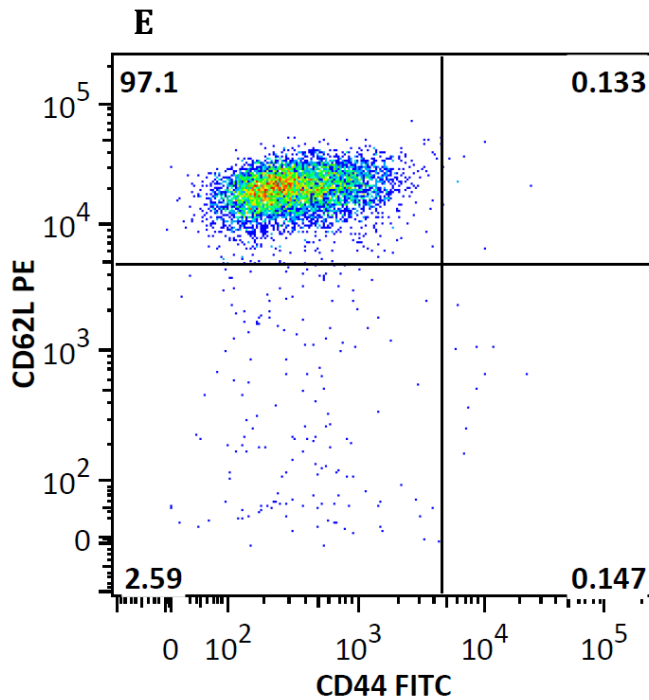


**MojoSort™ Mouse CD8 Naïve T Cell Isolation Kit**
**Before Isolation**

**After MojoSort™ Isolation CD8<sup>+</sup> Gated Cells**


**MojoSort™ Mouse CD8 Naïve T Cell Isolation Kit**

After MojoSort™ Isolation Ungated



A single cell suspension from C57BL/6 mouse spleen was prepared to isolate CD8<sup>+</sup> Naïve T cells using the MojoSort™ Mouse CD8 Naïve T Cell Isolation Kit.

**A)** Cells before isolation and **C)** Cells after isolation, stained with CD3<sup>+</sup> (clone 17A2) APC and CD8<sup>+</sup> (clone 53-6.7) Brilliant Violet 785™. **B)** Cells before isolation and **D)** Cells after isolation stained with CD62L (clone MEL-14) PE and CD44 (clone IM7) FITC, gated on CD8<sup>+</sup>/CD3<sup>+</sup> from **A)** and **C)**, respectively. **E)** CD62L and CD44 profile of isolated cells analyzed directly without CD8<sup>+</sup>/CD3<sup>+</sup> parent gate. Dead cells were excluded by 7-AAD.