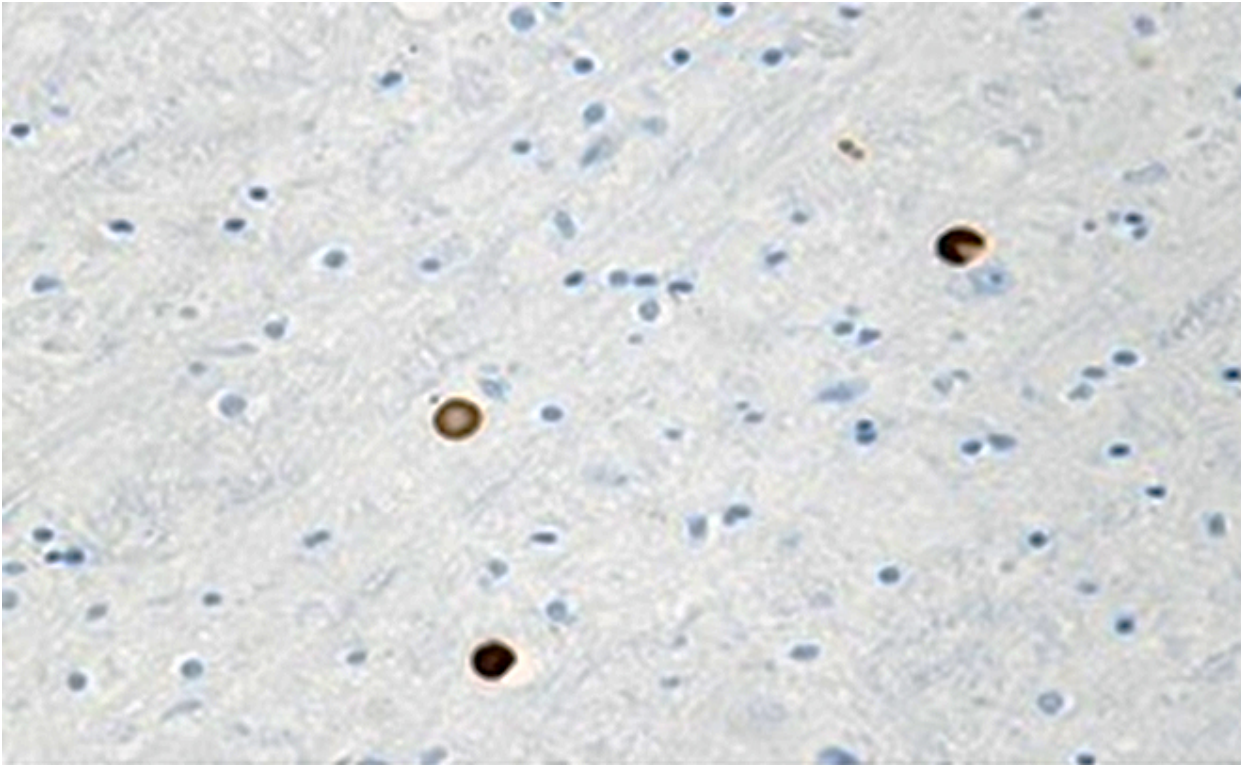


Biotin anti- α -Synuclein Phospho (Ser129) Antibody



IHC staining of α -synuclein deposits with biotin anti- α -Synuclein Phospho (Ser129) antibody (clone P-Syn/81A) on formalin-fixed, paraffin-embedded Parkinson's disease brain tissue. Following antigen retrieval using 70% formic acid, the tissue was incubated with the primary antibody at 5 μ g/mL overnight at 4°C. HRP Streptavidin and DAB 2 Component with Stabilizer was used for the detection system followed by hematoxylin counterstaining, according to the protocol provided.