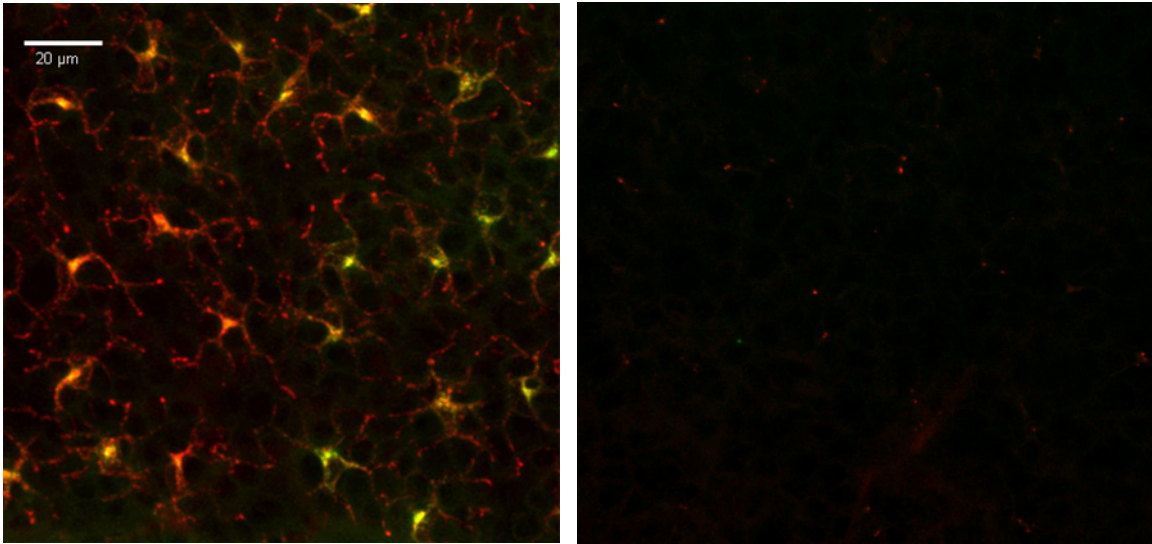
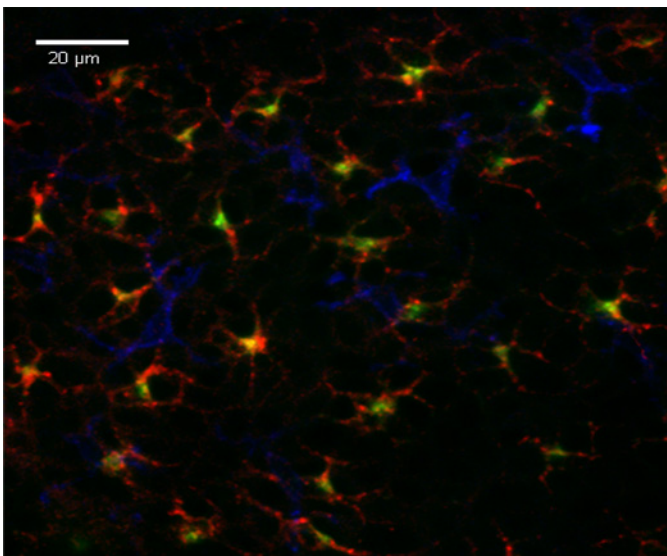


PE anti-mouse/human CD207 (Langerin) Antibody



Fixed whole mount mouse epidermis Langerhans cells were stained with Alexa Fluor® 647 CD11c (red) (clone N418) and PE CD207 (yellow) (clone 4C7) (left image). Isotype controls at the same concentrations were used for the negative control (right image). Cells were fixed in 4% formaldehyde and whole mounted in Prolong Gold without paraffin embedding or snap freezing and imaged with a Leica SP8 confocal. Image courtesy of Grzegorz Chodaczek and Zbigniew Mikulski at LIAI.



Fixed whole mount mouse epidermis Langerhans cells were stained with Alexa Fluor® 647 CD205 (red) (clone NLDC-145), PE CD207 (yellow) (clone 4C7), and Brilliant Violet 421™ CD3ε (blue) (clone 145-2C11). Isotype controls at the same concentrations were used for the negative control. Cells were mounted in Prolong Gold and imaged with a Leica SP8 confocal. Image courtesy of Grzegorz Chodaczek and Zbigniew Mikulski at LIAI.