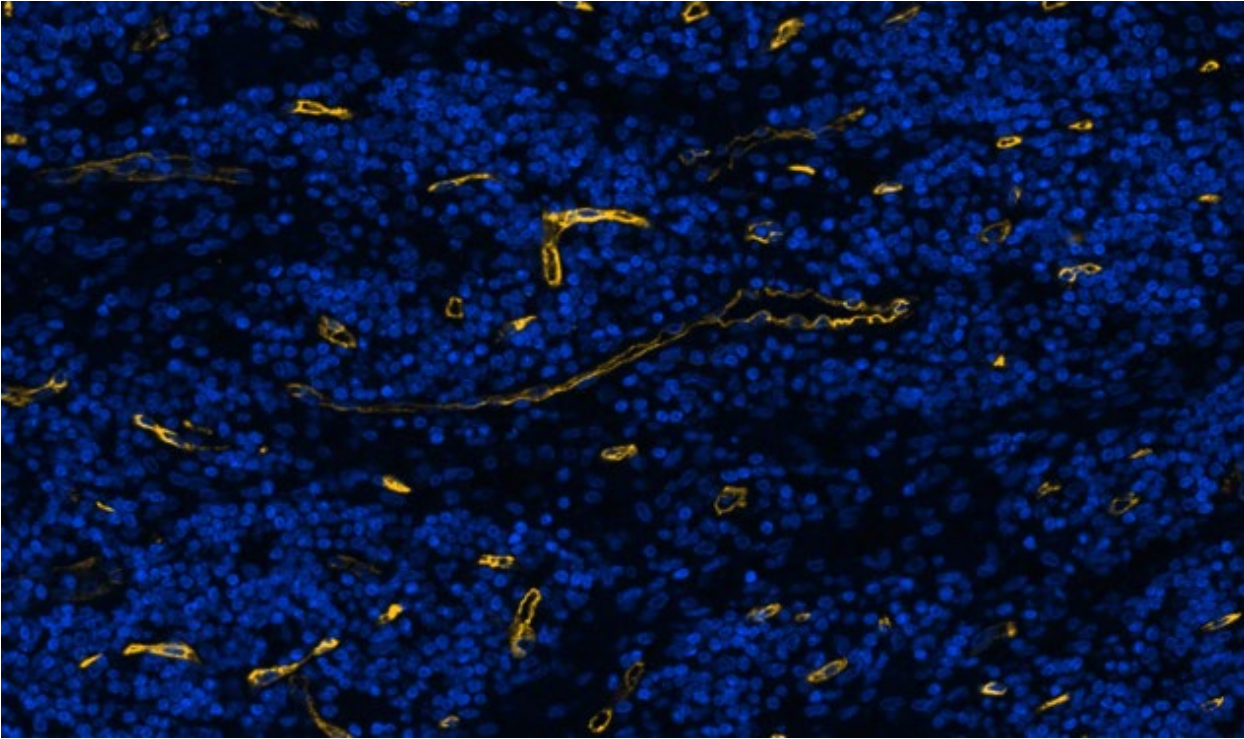


Purified anti-CD34 Antibody



SeqIF[™] (sequential immunofluorescence) staining on COMET[™] of Purified anti-CD34 (clone QBEnd/10, yellow) on formalin-fixed paraffin-embedded human pancreatic carcinoma tissue at 1.25 $\mu\text{g}/\text{mL}$. Alexa Fluor[™] Plus 647 Goat anti-Mouse IgG antibody (Lunaphore, Cat. No. DR647MS) was used as a secondary antibody. Nuclei were counterstained with DAPI (blue). Tissue underwent an all-in-one dewaxing and antigen retrieval preprocessing.