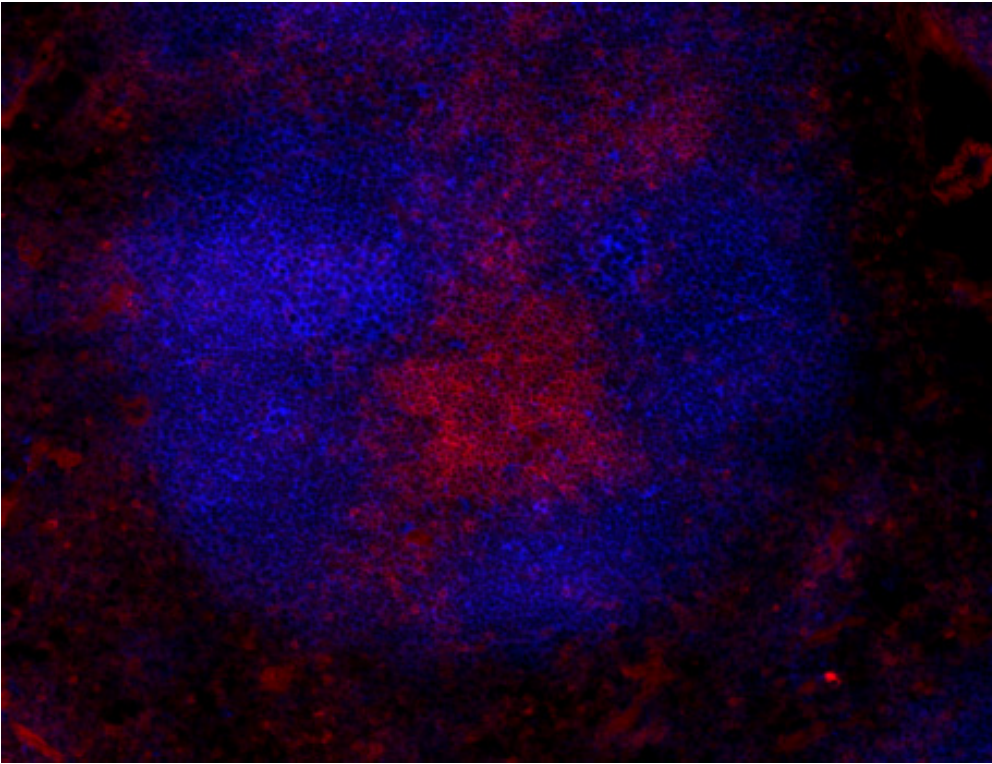


Brilliant Violet 421™ anti-mouse CD20 Antibody



C57BL/6 mouse frozen spleen section was fixed with 4% paraformaldehyde (PFA) for ten minutes at room temperature and blocked with 5% FBS plus 5% rat serum for one hour at room temperature. Then the section was stained with 2.5 $\mu\text{g}/\text{ml}$ of anti-mouse CD20 (clone SA275A11) Brilliant Violet 421™ (blue) and 5 $\mu\text{g}/\text{ml}$ of CD3 (clone 17A2) Alexa Fluor® 594 (red) at 4°C overnight. The image was captured with a 10X objective.