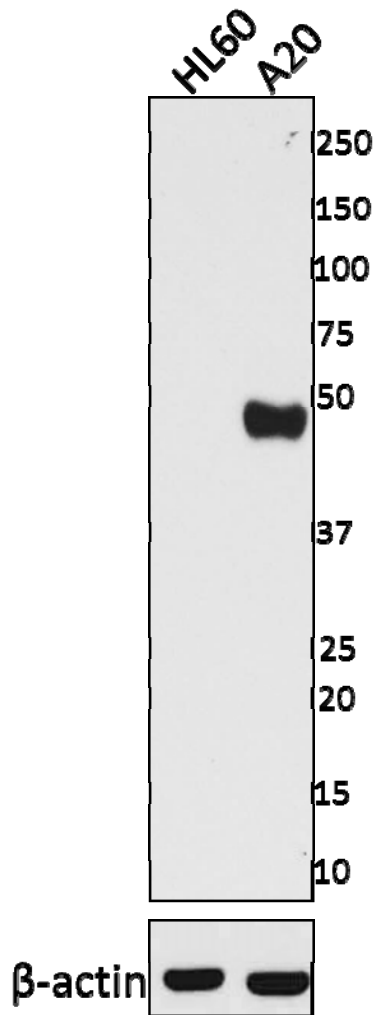


**Purified anti-ATF4 Antibody**



Total cell lysates (15 µg protein) from HL60 and A20 were resolved by 4-12% Bis-tris gel electrophoresis, transferred to nitrocellulose, and probed with 1 µg/mL purified anti-ATF4 (clone W16016A) antibody. Proteins were visualized using an HRP goat anti-rat-IgG secondary antibody (clone Poly4054) and chemiluminescence detection. Direct-Blot™ HRP anti-β-actin (clone 2F1-1) antibody was used as a loading control.